

Datasheet for ABIN6147198
anti-RPS14 antibody (AA 1-151)

4 Images

[Go to Product page](#)

Overview

Quantity:	100 µL
Target:	RPS14
Binding Specificity:	AA 1-151
Reactivity:	Human
Host:	Rabbit
Clonality:	Polyclonal
Conjugate:	This RPS14 antibody is un-conjugated
Application:	Western Blotting (WB), Immunohistochemistry (IHC), Immunofluorescence (IF)

Product Details

Immunogen:	Recombinant fusion protein containing a sequence corresponding to amino acids 1-151 of human RPS14 (NP_005608.1).
Sequence:	MAPRKGKEKK EEQVISLGPQ VAEGENVFGV CHIFASFNDT FVHVTDLSGK ETICRVTGGM KVKADRDESS PYAAMLAAQD VAQRCKELGI TALHIKLRAT GGNRTKTPGP GAQSALRALA RSGMKIGRIE DVTPIPSDST RRGGRGRRL
Isotype:	IgG
Cross-Reactivity:	Human, Mouse, Rat
Characteristics:	Polyclonal Antibodies

Target Details

Target:	RPS14
---------	-------

Target Details

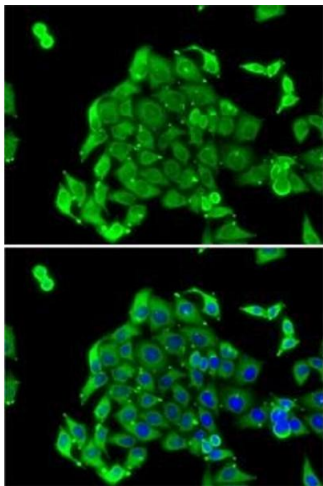
Alternative Name:	RPS14 (RPS14 Products)
Background:	Ribosomes, the organelles that catalyze protein synthesis, consist of a small 40S subunit and a large 60S subunit. Together these subunits are composed of 4 RNA species and approximately 80 structurally distinct proteins. This gene encodes a ribosomal protein that is a component of the 40S subunit. The protein belongs to the S11P family of ribosomal proteins. It is located in the cytoplasm. Transcript variants utilizing alternative transcription initiation sites have been described in the literature. As is typical for genes encoding ribosomal proteins, there are multiple processed pseudogenes of this gene dispersed through the genome. In Chinese hamster ovary cells, mutations in this gene can lead to resistance to emetine, a protein synthesis inhibitor. Multiple alternatively spliced transcript variants encoding the same protein have been found for this gene.,RPS14,EMTB,S14,Epigenetics & Nuclear Signaling,RPS14
Molecular Weight:	16 kDa
Gene ID:	6208
UniProt:	P62263
Pathways:	Ribonucleoprotein Complex Subunit Organization , Ribosome Assembly

Application Details

Application Notes:	WB,1:500 - 1:2000,IHC,1:50 - 1:200,IF,1:50 - 1:200
Comment:	HIGH QUALITY
Restrictions:	For Research Use only

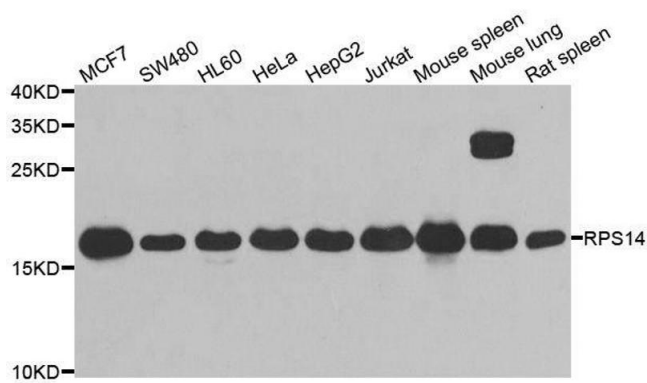
Handling

Format:	Liquid
Buffer:	PBS with 0.02 % sodium azide,50 % glycerol, pH 7.3.
Preservative:	Sodium azide
Precaution of Use:	This product contains Sodium azide: a POISONOUS AND HAZARDOUS SUBSTANCE which should be handled by trained staff only.
Storage:	-20 °C
Storage Comment:	Store at -20°C. Avoid freeze / thaw cycles.



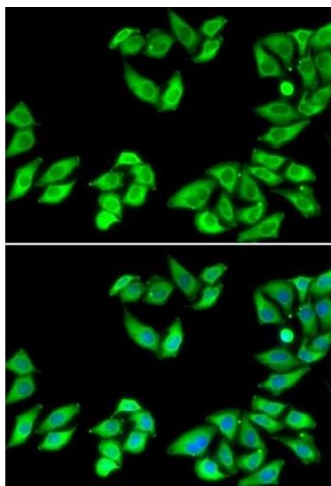
Immunofluorescence

Image 1. Immunofluorescence analysis of MCF7 cells using RPS14 antibody (ABIN6129109, ABIN6147198, ABIN6147199 and ABIN6222448). Blue: DAPI for nuclear staining.



Western Blotting

Image 2. Western blot analysis of extracts of various cell lines, using RPS14 antibody.



Immunofluorescence

Image 3. Immunofluorescence analysis of MCF7 cells using RPS14 antibody.

Please check the [product details page](#) for more images. Overall 4 images are available for ABIN6147198.