

Datasheet for ABIN6147201
anti-RPS15A antibody (AA 1-130)

5 Images

[Go to Product page](#)

Overview

| | |
|----------------------|---|
| Quantity: | 100 µL |
| Target: | RPS15A (RA) |
| Binding Specificity: | AA 1-130 |
| Reactivity: | Human |
| Host: | Rabbit |
| Clonality: | Polyclonal |
| Conjugate: | This RPS15A antibody is un-conjugated |
| Application: | Western Blotting (WB), Immunohistochemistry (IHC) |

Product Details

| | |
|-------------------|---|
| Immunogen: | Recombinant fusion protein containing a sequence corresponding to amino acids 1-130 of human RPS15A (NP_001010.2). |
| Sequence: | MVRMNVLADA LKSINNAEKR GKRQVLIRPC SKVIVRFLTV MMKHGYIGEF EIIDHRAGK IVVNLTGRLN KCGVISPRFD VQLKDLEKWQ NNLLPSRQFG FIVLTTSAGI MDHEEARRKH TGGKILGFFF |
| Isotype: | IgG |
| Cross-Reactivity: | Human, Mouse, Rat |
| Characteristics: | Polyclonal Antibodies |

Target Details

| | |
|---------|-------------|
| Target: | RPS15A (RA) |
|---------|-------------|

Target Details

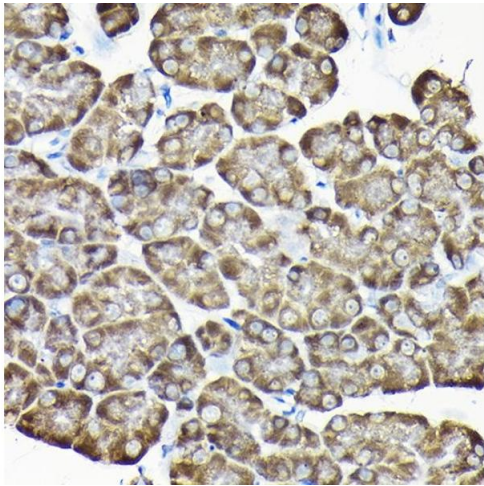
| | |
|-------------------|--|
| Alternative Name: | RPS15A (RA Products) |
| Background: | Ribosomes, the organelles that catalyze protein synthesis, consist of a small 40S subunit and a large 60S subunit. Together these subunits are composed of 4 RNA species and approximately 80 structurally distinct proteins. This gene encodes a ribosomal protein that is a component of the 40S subunit. The protein belongs to the S8P family of ribosomal proteins. It is located in the cytoplasm. As is typical for genes encoding ribosomal proteins, there are multiple processed pseudogenes of this gene dispersed through the genome.,RPS15A,S15a,Epigenetics & Nuclear Signaling,RNA Binding,RPS15A |
| Molecular Weight: | 14 kDa |
| Gene ID: | 6210 |
| UniProt: | P62244 |

Application Details

| | |
|--------------------|------------------------------------|
| Application Notes: | WB,1:500 - 1:2000,IHC,1:50 - 1:200 |
| Comment: | HIGH QUALITY |
| Restrictions: | For Research Use only |

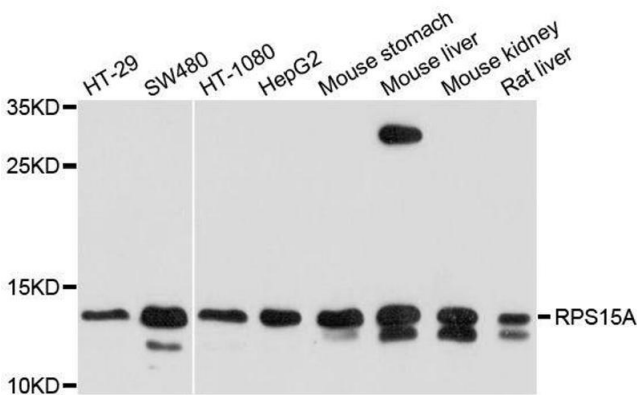
Handling

| | |
|--------------------|--|
| Format: | Liquid |
| Buffer: | PBS with 0.02 % sodium azide,50 % glycerol, pH 7.3. |
| Preservative: | Sodium azide |
| Precaution of Use: | This product contains Sodium azide: a POISONOUS AND HAZARDOUS SUBSTANCE which should be handled by trained staff only. |
| Storage: | -20 °C |
| Storage Comment: | Store at -20°C. Avoid freeze / thaw cycles. |



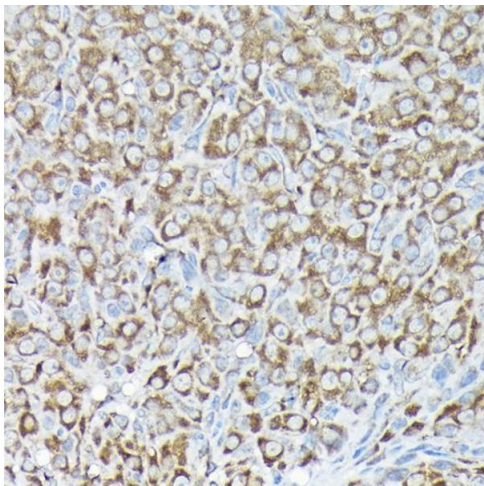
Immunohistochemistry

Image 1. Immunohistochemistry of paraffin-embedded mouse pancreas using RPS15A Rabbit pAb (ABIN6131092, ABIN6147201, ABIN6147202 and ABIN6214414) at dilution of 1:200 (40x lens). Perform high pressure antigen retrieval with 10 mM citrate buffer pH 6.0 before commencing with IHC staining protocol.



Western Blotting

Image 2. Western blot analysis of extracts of various cell lines, using RPS15A antibody.



Immunohistochemistry

Image 3. Immunohistochemistry of paraffin-embedded rat ovary using RPS15A Rabbit pAb (ABIN6131092, ABIN6147201, ABIN6147202 and ABIN6214414) at dilution of 1:200 (40x lens). Perform high pressure antigen retrieval with 10 mM citrate buffer pH 6.0 before commencing with IHC staining protocol.

Please check the [product details page](#) for more images. Overall 5 images are available for ABIN6147201.