

Datasheet for ABIN6147211  
**anti-RPS20 antibody (AA 1-119)**

## 2 Images

[Go to Product page](#)

## Overview

Quantity:	100 µL
Target:	RPS20
Binding Specificity:	AA 1-119
Reactivity:	Human
Host:	Rabbit
Clonality:	Polyclonal
Conjugate:	This RPS20 antibody is un-conjugated
Application:	Western Blotting (WB), Immunofluorescence (IF)

## Product Details

Immunogen:	Recombinant fusion protein containing a sequence corresponding to amino acids 1-119 of human RPS20 (NP_001014.1).
Sequence:	MAFKDTGKTP VEPEVAIHRI RITLTSRNVK SLEKVCADLI RGAKEKNLKV KGPVRMPTKT LRITTRKTPC GEGSKTWDRF QMRIHKRLID LHSPSEIVKQ ITSISIEPGV EVEVTIADA
Isotype:	IgG
Cross-Reactivity:	Human, Mouse, Rat
Characteristics:	Polyclonal Antibodies

## Target Details

Target:	RPS20
---------	-------

## Target Details

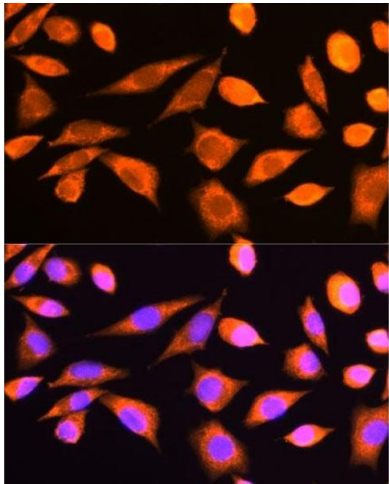
Alternative Name:	RPS20 ( <a href="#">RPS20 Products</a> )
Background:	Ribosomes, the organelles that catalyze protein synthesis, consist of a small 40S subunit and a large 60S subunit. Together these subunits are composed of 4 RNA species and approximately 80 structurally distinct proteins. This gene encodes a ribosomal protein that is a component of the 40S subunit. The protein belongs to the S10P family of ribosomal proteins. It is located in the cytoplasm. This gene is co-transcribed with the small nucleolar RNA gene U54, which is located in its second intron. As is typical for genes encoding ribosomal proteins, there are multiple processed pseudogenes of this gene dispersed through the genome. Two transcript variants encoding different isoforms have been identified for this gene.,RPS20,S20,Epigenetics & Nuclear Signaling,RNA Binding,RPS20
Molecular Weight:	13 kDa/16 kDa
Gene ID:	6224
UniProt:	<a href="#">P60866</a>

## Application Details

Application Notes:	WB,1:500 - 1:2000,IF,1:50 - 1:200
Comment:	HIGH QUALITY
Restrictions:	For Research Use only

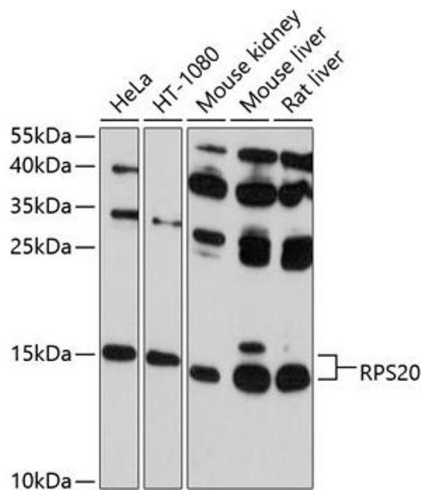
## Handling

Format:	Liquid
Buffer:	PBS with 0.02 % sodium azide,50 % glycerol, pH 7.3.
Preservative:	Sodium azide
Precaution of Use:	This product contains Sodium azide: a POISONOUS AND HAZARDOUS SUBSTANCE which should be handled by trained staff only.
Storage:	-20 °C
Storage Comment:	Store at -20°C. Avoid freeze / thaw cycles.



Immunofluorescence

**Image 1.** Immunofluorescence analysis of L929 cells using RPS20 antibody (ABIN6129112, ABIN6147211, ABIN6147212 and ABIN6214592) at dilution of 1:100. Blue: DAPI for nuclear staining.



Western Blotting

**Image 2.** Western blot analysis of extracts of various cell lines, using RPS20 antibody (ABIN6129112, ABIN6147211, ABIN6147212 and ABIN6214592) at 1:1000 dilution. Secondary antibody: HRP Goat Anti-Rabbit IgG (H+L) (ABIN1684268 and ABIN3020597) at 1:10000 dilution. Lysates/proteins: 25 µg per lane. Blocking buffer: 3 % nonfat dry milk in TBST. Detection: ECL Basic Kit (RM00020). Exposure time: 60s.