

Datasheet for ABIN6147213  
**anti-RPS24 antibody (AA 1-130)**

## 3 Images

[Go to Product page](#)

## Overview

Quantity:	100 µL
Target:	RPS24
Binding Specificity:	AA 1-130
Reactivity:	Human
Host:	Rabbit
Clonality:	Polyclonal
Conjugate:	This RPS24 antibody is un-conjugated
Application:	Western Blotting (WB), Immunohistochemistry (IHC), Immunoprecipitation (IP)

## Product Details

Immunogen:	Recombinant fusion protein containing a sequence corresponding to amino acids 1-130 of human RPS24 (NP_148982.1).
Sequence:	MNDTVTIRTR KFMNRLQLR KQMVIDVLHP GKATVPKTEI REKLAKMYKT TPDVIFVFGF RTHFGGGKTT GFGMIYDSL D YAKKNEPKHR LARHGLYEKK KTSRKQQRER KNRMKKVRGT AKANVGAGKK
Isotype:	IgG
Cross-Reactivity:	Human, Mouse, Rat
Characteristics:	Polyclonal Antibodies

## Target Details

Target:	RPS24
---------	-------

## Target Details

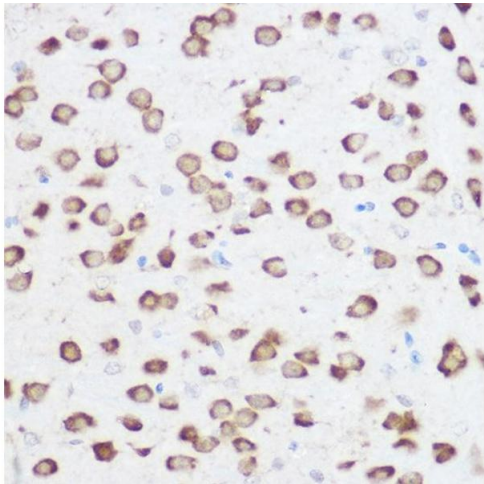
Alternative Name:	RPS24 ( <a href="#">RPS24 Products</a> )
Background:	Ribosomes, the organelles that catalyze protein synthesis, consist of a small 40S subunit and a large 60S subunit. Together these subunits are composed of 4 RNA species and approximately 80 structurally distinct proteins. This gene encodes a ribosomal protein that is a component of the 40S subunit. The protein belongs to the S24E family of ribosomal proteins. It is located in the cytoplasm. Multiple transcript variants encoding different isoforms have been found for this gene. As is typical for genes encoding ribosomal proteins, there are multiple processed pseudogenes of this gene dispersed through the genome. Mutations in this gene result in Diamond-Blackfan anemia.,RPS24,DBA3,S24,Epigenetics & Nuclear Signaling,RNA Binding,RPS24
Molecular Weight:	15 kDa/32 kDa
Gene ID:	6229
UniProt:	<a href="#">P62847</a>

## Application Details

Application Notes:	WB,1:500 - 1:2000,IHC,1:50 - 1:200,IP,1:50 - 1:100
Comment:	HIGH QUALITY
Restrictions:	For Research Use only

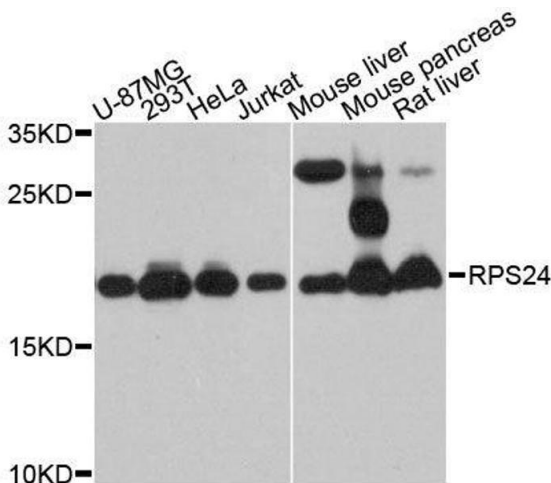
## Handling

Format:	Liquid
Buffer:	PBS with 0.02 % sodium azide,50 % glycerol, pH 7.3.
Preservative:	Sodium azide
Precaution of Use:	This product contains Sodium azide: a POISONOUS AND HAZARDOUS SUBSTANCE which should be handled by trained staff only.
Storage:	-20 °C
Storage Comment:	Store at -20°C. Avoid freeze / thaw cycles.



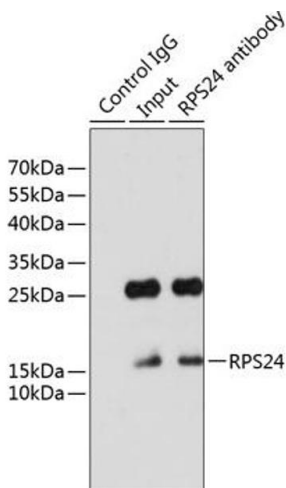
Immunohistochemistry

**Image 1.** Immunohistochemistry of paraffin-embedded rat brain using RPS24 Rabbit pAb (ABIN6133032, ABIN6147213, ABIN6147214 and ABIN6215701) at dilution of 1:200 (40x lens). Perform high pressure antigen retrieval with 10 mM citrate buffer pH 6.0 before commencing with IHC staining protocol.



Western Blotting

**Image 2.** Western blot analysis of extracts of various cell lines, using RPS24 antibody.



Immunoprecipitation

**Image 3.** Immunoprecipitation analysis of 200 µg extracts of HeLa cells using 3 µg RPS24 antibody ( ABIN6133032, ABIN6147213, ABIN6147214 and ABIN6215701). Western blot was performed from the immunoprecipitate using RPS24 antibody ( ABIN6133032, ABIN6147213, ABIN6147214 and ABIN6215701) at a dilution of 1:1000.