

Datasheet for ABIN6147227
anti-RPS6 antibody (AA 1-100)

5 Images

1 Publication

[Go to Product page](#)

Overview

Quantity:	100 µL
Target:	RPS6
Binding Specificity:	AA 1-100
Reactivity:	Human
Host:	Rabbit
Clonality:	Polyclonal
Conjugate:	This RPS6 antibody is un-conjugated
Application:	Western Blotting (WB), Immunohistochemistry (IHC), Immunofluorescence (IF)

Product Details

Immunogen:	A synthetic peptide corresponding to a sequence within amino acids 1-100 of human RPS6 (NP_001001.2).
Sequence:	MKLNISFPAT GCQKLVDD ERKLRTFYEK RMATEVAADA LGEEWKGYVV RISGGNDKQG FPMKQGVLTG GRVRLLLSKG HSCYRPRRTG ERKRKSVRGC
Isotype:	IgG
Cross-Reactivity:	Human, Mouse, Rat
Characteristics:	Polyclonal Antibodies

Target Details

Target:	RPS6
---------	------

Target Details

Alternative Name:	RPS6 (RPS6 Products)
Background:	<p>Ribosomes, the organelles that catalyze protein synthesis, consist of a small 40S subunit and a large 60S subunit. Together these subunits are composed of 4 RNA species and approximately 80 structurally distinct proteins. This gene encodes a cytoplasmic ribosomal protein that is a component of the 40S subunit. The protein belongs to the S6E family of ribosomal proteins. It is the major substrate of protein kinases in the ribosome, with subsets of five C-terminal serine residues phosphorylated by different protein kinases. Phosphorylation is induced by a wide range of stimuli, including growth factors, tumor-promoting agents, and mitogens.</p> <p>Dephosphorylation occurs at growth arrest. The protein may contribute to the control of cell growth and proliferation through the selective translation of particular classes of mRNA. As is typical for genes encoding ribosomal proteins, there are multiple processed pseudogenes of this gene dispersed through the genome.,RPS6,S6,RPS6,Epigenetics & Nuclear Signaling,RNA Binding,Translation Control,Regulation of eIF4 and p70 S6 Kinase,Signal Transduction,PI3K-Akt Signaling Pathway,MAPK-Erk Signaling Pathway,Akt downstream targets,RPS6</p>
Molecular Weight:	28 kDa
Gene ID:	6194
UniProt:	P62753
Pathways:	Carbohydrate Homeostasis , Ribonucleoprotein Complex Subunit Organization , Ribosome Assembly

Application Details

Application Notes:	WB,1:500 - 1:1000,IHC,1:50 - 1:100,IF,1:50 - 1:200
Restrictions:	For Research Use only

Handling

Format:	Liquid
Buffer:	PBS with 0.02 % sodium azide,50 % glycerol, pH 7.3.
Preservative:	Sodium azide
Precaution of Use:	This product contains Sodium azide: a POISONOUS AND HAZARDOUS SUBSTANCE which should be handled by trained staff only.
Storage:	-20 °C

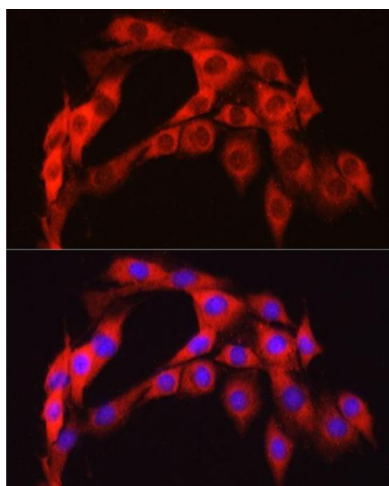
Handling

Storage Comment: Store at -20°C. Avoid freeze / thaw cycles.

Publications

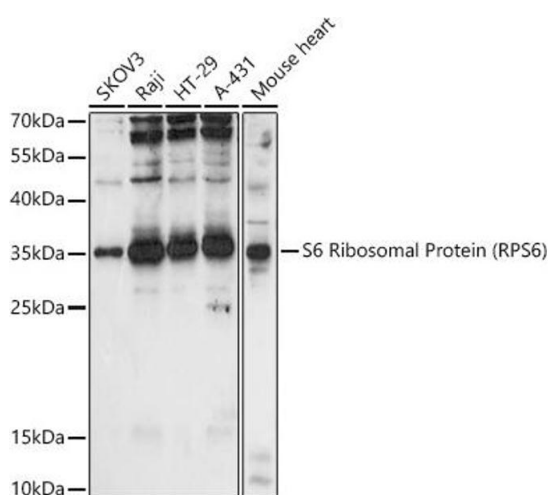
Product cited in: Gao, Wang, Wang, Hu, Chen, Li, Feng, Wong, Du: "The lysine methyltransferase SMYD2 methylates the kinase domain of type II receptor BMPR2 and stimulates bone morphogenetic protein signaling." in: **The Journal of biological chemistry**, Vol. 292, Issue 30, pp. 12702-12712, (2017) ([PubMed](#)).

Validation report #104300 for Cleavage Under Targets and Release Using Nuclease (CUT&RUN)



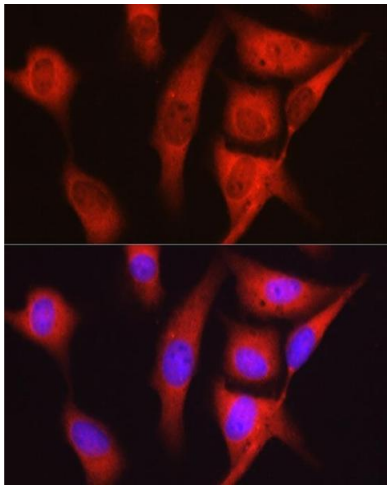
Immunofluorescence

Image 1. Immunofluorescence analysis of PC-12 cells using S6 Ribosomal Protein (RPS6) Rabbit pAb (ABIN6133901, ABIN6147227, ABIN6147228 and ABIN6221687) at dilution of 1:100 (40x lens). Blue: DAPI for nuclear staining.



Western Blotting

Image 2. Western blot analysis of extracts of various cell lines, using S6 Ribosomal Protein (RPS6) antibody (ABIN6133901, ABIN6147227, ABIN6147228 and ABIN6221687) at 1:1000 dilution. Secondary antibody: HRP Goat Anti-Rabbit IgG (H+L) (ABIN1684268 and ABIN3020597) at 1:10000 dilution. Lysates/proteins: 25 µg per lane. Blocking buffer: 3 % nonfat dry milk in TBST. Detection: ECL Basic Kit (RM00020). Exposure time: 90s.



Immunofluorescence

Image 3. Immunofluorescence analysis of U2OS cells using S6 Ribosomal Protein (RPS6) Rabbit pAb (ABIN6133901, ABIN6147227, ABIN6147228 and ABIN6221687) at dilution of 1:100 (40x lens). Blue: DAPI for nuclear staining.

Please check the [product details page](#) for more images. Overall 5 images are available for ABIN6147227.