



[Go to Product page](#)

Datasheet for ABIN6147242  
**anti-RPS6KL1 antibody (AA 1-130)**

2 Images

Overview

|                      |  |
|----------------------|--|
| Quantity:            | 100 µL   |
| Target:              | RPS6KL1  |
| Binding Specificity: | AA 1-130                                       |
| Reactivity:          | Human  |
| Host:                | Rabbit   |
| Clonality:           | Polyclonal                                     |
| Conjugate:           | This RPS6KL1 antibody is un-conjugated         |
| Application:         | Western Blotting (WB), Immunofluorescence (IF) |

Product Details

|                   |   |
|-------------------|---|
| Immunogen:        | Recombinant fusion protein containing a sequence corresponding to amino acids 1-130 of human RPS6KL1 (NP_113652.2).                                   |
| Sequence:         | MSLVACECLP SPGLEPEPCS RARSQAHVYL EQIRNRVALG VPDMTKRDYL VDAATQIRLA<br>LERDVSEDYE AAFNHYQNGV DVLLRGIHVD PNKERREAVK LKITKYLRRRA EEIFNCHLQR<br>PLSSGASPSA |
| Isotype:          | IgG   |
| Cross-Reactivity: | Human, Mouse, Rat   |
| Characteristics:  | Polyclonal Antibodies   |

Target Details

|         |         |
|---------|---------|
| Target: | RPS6KL1 |
|---------|---------|

## Target Details

|                   |  |
|-------------------|--|
| Alternative Name: | RPS6KL1 ( <a href="#">RPS6KL1 Products</a> )     |
| Background:       | RPS6KL1,RSKL2,Signal Transduction,Kinase,RPS6KL1 |
| Molecular Weight: | 28 kDa/59 kDa/60 kDa                             |
| Gene ID:          | 83694  |
| UniProt:          | <a href="#">Q9Y6S9</a>                           |

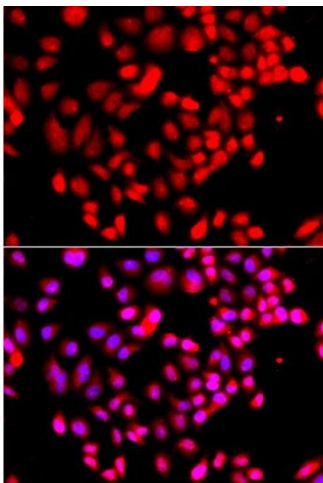
## Application Details

|                    |                                   |
|--------------------|-----------------------------------|
| Application Notes: | WB,1:500 - 1:2000,IF,1:50 - 1:200 |
| Comment:           | HIGH QUALITY                      |
| Restrictions:      | For Research Use only             |

## Handling

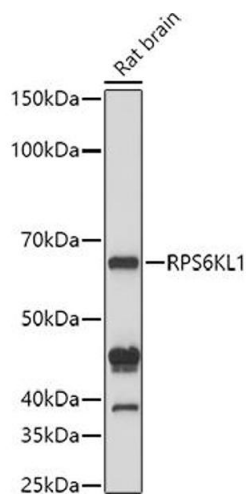
|                    |  |
|--------------------|--|
| Format:            | Liquid   |
| Buffer:            | PBS with 0.02 % sodium azide,50 % glycerol, pH 7.3.  |
| Preservative:      | Sodium azide   |
| Precaution of Use: | This product contains Sodium azide: a POISONOUS AND HAZARDOUS SUBSTANCE which should be handled by trained staff only. |
| Storage:           | -20 °C   |
| Storage Comment:   | Store at -20°C. Avoid freeze / thaw cycles.  |

## Validation report #104300 for Cleavage Under Targets and Release Using Nuclease (CUT&RUN)



### Immunofluorescence

**Image 1.** Immunofluorescence analysis of cells using RPS6KL1 antibody (ABIN6130681, ABIN6147242, ABIN6147243 and ABIN6223376). Blue: DAPI for nuclear staining.



### Western Blotting

**Image 2.** Western blot analysis of extracts of Rat brain cells, using RPS6KL1 antibody (ABIN6130681, ABIN6147242, ABIN6147243 and ABIN6223376) at 1:1000 dilution. Secondary antibody: HRP Goat Anti-Rabbit IgG (H+L) (ABIN1684268 and ABIN3020597) at 1:10000 dilution. Lysates/proteins: 25 µg per lane. Blocking buffer: 3 % nonfat dry milk in TBST. Detection: ECL Basic Kit (RM00020). Exposure time: 10s.