

Datasheet for ABIN6147247

anti-RPSA/Laminin Receptor antibody (AA 1-295)[Go to Product page](#)

4 Images

Overview

Quantity:	100 µL
Target:	RPSA/Laminin Receptor (RPSA)
Binding Specificity:	AA 1-295
Reactivity:	Human
Host:	Rabbit
Clonality:	Polyclonal
Conjugate:	This RPSA/Laminin Receptor antibody is un-conjugated
Application:	Western Blotting (WB), Immunofluorescence (IF)

Product Details

Immunogen:	Recombinant fusion protein containing a sequence corresponding to amino acids 1-295 of human 67kDa Laminin Receptor (NP_002286.2).
Sequence:	MSGALDVLQM KEEDVLKFLA AGTHLGGTNL DFQMEQYIYK RKSDGIYIIN LKRTWEKLLL AARAIVAIEN PADVSVISSR NTGQRAVLKF AAATGATPIA GRFTPGTFTN QIQAAFREPR LLVVTDPAD HQPLTEASYV NLPTIALCNT DSPLRYVDIA IPCNNKGAHS VGLMWWMLAR EVLRMRGTTIS REHPWEVMPD LYFYRDPEEI EKEEQAAAEEK AVTKKEEFQGE WTAPAPEFTA TQPEVADWSE GVQVPSVPIQ QFPTEDWSAQ PATEDWSAAP TAQATEWVGA TTDWS
Isotype:	IgG
Cross-Reactivity:	Human, Mouse, Rat
Characteristics:	Polyclonal Antibodies

Target Details

Target: RPSA/Laminin Receptor (RPSA)

Alternative Name: RPSA ([RPSA Products](#))

Background: Laminins, a family of extracellular matrix glycoproteins, are the major noncollagenous constituent of basement membranes. They have been implicated in a wide variety of biological processes including cell adhesion, differentiation, migration, signaling, neurite outgrowth and metastasis. Many of the effects of laminin are mediated through interactions with cell surface receptors. These receptors include members of the integrin family, as well as non-integrin laminin-binding proteins. This gene encodes a high-affinity, non-integrin family, laminin receptor 1. This receptor has been variously called 67 kD laminin receptor, 37 kD laminin receptor precursor (37LRP) and p40 ribosome-associated protein. The amino acid sequence of laminin receptor 1 is highly conserved through evolution, suggesting a key biological function. It has been observed that the level of the laminin receptor transcript is higher in colon carcinoma tissue and lung cancer cell line than their normal counterparts. Also, there is a correlation between the upregulation of this polypeptide in cancer cells and their invasive and metastatic phenotype. Multiple copies of this gene exist, however, most of them are pseudogenes thought to have arisen from retropositional events. Two alternatively spliced transcript variants encoding the same protein have been found for this gene.,RPSA,37LRP,67LR,ICAS,LAMBR,LAMR1,LBP,LBP/p40,LRP,LRP/LR,NEM/1CHD4,SA,lamR,p40,Signal Transduction,Cell Biology & Developmental Biology,Cell Adhesion,Cytoskeleton,Intermediate Filaments,Extracellular Matrix,Neuroscience,Neurodegenerative Diseases,Cardiovascular,Angiogenesis,RPSA

Molecular Weight: 32 kDa

Gene ID: 3921

UniProt: [P08865](#)

Pathways: [Ribonucleoprotein Complex Subunit Organization](#), [Ribosome Assembly](#)

Application Details

Application Notes: WB,1:500 - 1:2000,IF,1:50 - 1:200

Comment: HIGH QUALITY

Restrictions: For Research Use only

Handling

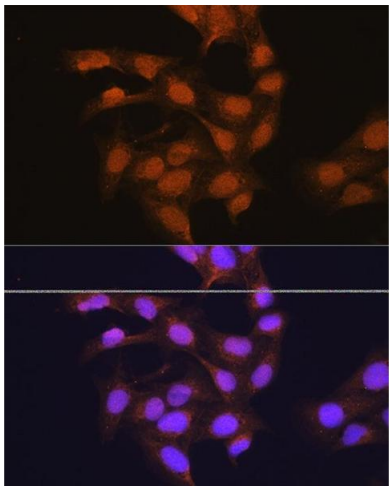
Format: Liquid

Buffer: PBS with 0.02 % sodium azide,50 % glycerol, pH 7.3.

Handling

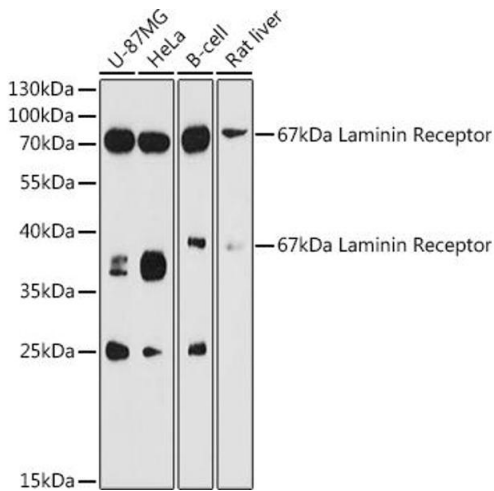
Preservative:	Sodium azide
Precaution of Use:	This product contains Sodium azide: a POISONOUS AND HAZARDOUS SUBSTANCE which should be handled by trained staff only.
Storage:	-20 °C
Storage Comment:	Store at -20°C. Avoid freeze / thaw cycles.

Images



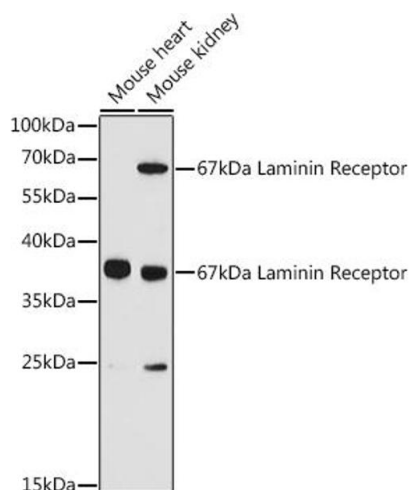
Immunofluorescence

Image 1. Immunofluorescence analysis of U-2 OS cells using 67 kDa Laminin Receptor Rabbit pAb (ABIN6128199, ABIN6147247, ABIN6147248 and ABIN6224857) at dilution of 1:100 (40x lens). Blue: DAPI for nuclear staining.



Western Blotting

Image 2. Western blot analysis of extracts of various cell lines, using 67 kDa Laminin Receptor antibody (ABIN6128199, ABIN6147247, ABIN6147248 and ABIN6224857) at 1:3000 dilution. Secondary antibody: HRP Goat Anti-Rabbit IgG (H+L) (ABIN1684268 and ABIN3020597) at 1:10000 dilution. Lysates/proteins: 25 µg per lane. Blocking buffer: 3 % nonfat dry milk in TBST. Detection: ECL Enhanced Kit (RM00021). Exposure time: 90s.



Western Blotting

Image 3. Western blot analysis of extracts of various cell lines, using 67 kDa Laminin Receptor antibody (ABIN6128199, ABIN6147247, ABIN6147248 and ABIN6224857) at 1:3000 dilution. Secondary antibody: HRP Goat Anti-Rabbit IgG (H+L) (ABIN1684268 and ABIN3020597) at 1:10000 dilution. Lysates/proteins: 25 µg per lane. Blocking buffer: 3 % nonfat dry milk in TBST. Detection: ECL Basic Kit (RM00020). Exposure time: 90s.

Please check the [product details page](#) for more images. Overall 4 images are available for ABIN6147247.