

Datasheet for ABIN6147259
anti-RRBP1 antibody (AA 1-140)

2 Images

[Go to Product page](#)

Overview

Quantity:	100 µL
Target:	RRBP1
Binding Specificity:	AA 1-140
Reactivity:	Human
Host:	Rabbit
Clonality:	Polyclonal
Conjugate:	This RRBP1 antibody is un-conjugated
Application:	Western Blotting (WB), Immunofluorescence (IF), Immunohistochemistry (IHC)

Product Details

Immunogen:	Recombinant fusion protein containing a sequence corresponding to amino acids 1-140 of human RRBP1 (NP_004578.2).
Sequence:	MDIYDTQLTG VVVFGGFMVV SAIGIFLVST FSMKETS YEE ALANQRKEMA KTHHQKVEKK KKEKTVEKKG KTKKKEEKPN GKIPDHDPAP NVTVLLREPV RAPAVAVAPT PVQPPPIIVAP VATVPAMPQE KLASSPKDKK
Isotype:	IgG
Cross-Reactivity:	Human, Mouse, Rat
Characteristics:	Polyclonal Antibodies

Target Details

Target:	RRBP1
---------	-------

Target Details

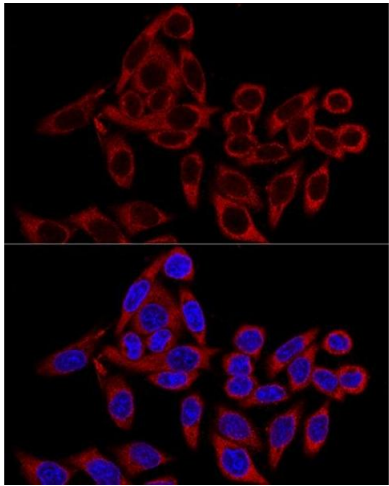
Alternative Name:	RRBP1 (RRBP1 Products)
Background:	<p>This gene encodes a ribosome-binding protein of the endoplasmic reticulum (ER) membrane. Studies suggest that this gene plays a role in ER proliferation, secretory pathways and secretory cell differentiation, and mediation of ER-microtubule interactions. Alternative splicing has been observed and protein isoforms are characterized by regions of N-terminal decapeptide and C-terminal heptad repeats. Splicing of the tandem repeats results in variations in ribosome-binding affinity and secretory function. The full-length nature of variants which differ in repeat length has not been determined. Pseudogenes of this gene have been identified on chromosomes 3 and 7, and RRBP1 has been excluded as a candidate gene in the cause of Alagille syndrome, the result of a mutation in a nearby gene on chromosome 20p12.,RRBP1,ES/130,ES130,RRp,hES,Epigenetics & Nuclear Signaling,Cancer,Tumor biomarkers,RRBP1</p>
Molecular Weight:	108 kDa/152 kDa
Gene ID:	6238
UniProt:	Q9P2E9

Application Details

Application Notes:	WB,1:500 - 1:2000,IHC,1:50 - 1:200,IF,1:50 - 1:200
Comment:	HIGH QUALITY
Restrictions:	For Research Use only

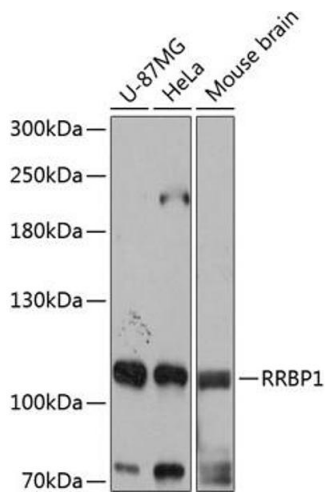
Handling

Format:	Liquid
Buffer:	PBS with 0.02 % sodium azide,50 % glycerol, pH 7.3.
Preservative:	Sodium azide
Precaution of Use:	This product contains Sodium azide: a POISONOUS AND HAZARDOUS SUBSTANCE which should be handled by trained staff only.
Storage:	-20 °C
Storage Comment:	Store at -20°C. Avoid freeze / thaw cycles.



Immunofluorescence

Image 1. Confocal immunofluorescence analysis of HeLa cells using RRBP1 Polyclonal Antibody (ABIN6132872, ABIN6147259, ABIN6147260 and ABIN6215844) at dilution of 1:100. Blue: DAPI for nuclear staining.



Western Blotting

Image 2. Western blot analysis of extracts of various cell lines, using RRBP1 antibody (ABIN6132872, ABIN6147259, ABIN6147260 and ABIN6215844) at 1:3000 dilution. Secondary antibody: HRP Goat Anti-Rabbit IgG (H+L) (ABIN1684268 and ABIN3020597) at 1:10000 dilution. Lysates/proteins: 25 µg per lane. Blocking buffer: 3 % nonfat dry milk in TBST. Detection: ECL Basic Kit (RM00020). Exposure time: 1s.