

Datasheet for ABIN6147283
anti-RSRC1 antibody (AA 117-276)



[Go to Product page](#)

5 Images

Overview

Quantity:	100 µL
Target:	RSRC1
Binding Specificity:	AA 117-276
Reactivity:	Human
Host:	Rabbit
Clonality:	Polyclonal
Conjugate:	This RSRC1 antibody is un-conjugated
Application:	Western Blotting (WB), Immunohistochemistry (IHC), Immunofluorescence (IF)

Product Details

Immunogen:	Recombinant fusion protein containing a sequence corresponding to amino acids 117-276 of human RSRC1 (NP_001258763.1).
Sequence:	EHLPPAEQAK ARLQLVLEAA AKADEALKAK ERNEEEAKRR KEEDQATLVE QVKRVKEIEA IESDSFVQQT FRSSKEVKKS VEPSEVKQAT STSGPASAVA DPPSTEKEID PTSIPTAIKY QDDNSLAHPN LFIEKADAEE KWFKRLIALR QERLMGSPVA
Isotype:	IgG
Cross-Reactivity:	Human, Mouse, Rat
Characteristics:	Polyclonal Antibodies

Target Details

Target:	RSRC1
---------	-------

Target Details

Alternative Name: [RSRC1 \(RSRC1 Products\)](#)

Background: This gene encodes a member of the serine and arginine rich-related protein family. The encoded protein is involved in both constitutive and alternative mRNA splicing. This gene may be associated with schizophrenia. A pseudogene of this gene is located on chromosome 9. Alternative splicing results in multiple transcript variants encoding different isoforms.,RSRC1,BM-011,SFRS21,SRp53,Epigenetics & Nuclear Signaling,RSRC1

Molecular Weight: 31 kDa/38 kDa

Gene ID: 51319

UniProt: [Q96LZ7](#)

Application Details

Application Notes: WB,1:500 - 1:2000,IHC,1:50 - 1:100,IF,1:50 - 1:100

Restrictions: For Research Use only

Handling

Format: Liquid

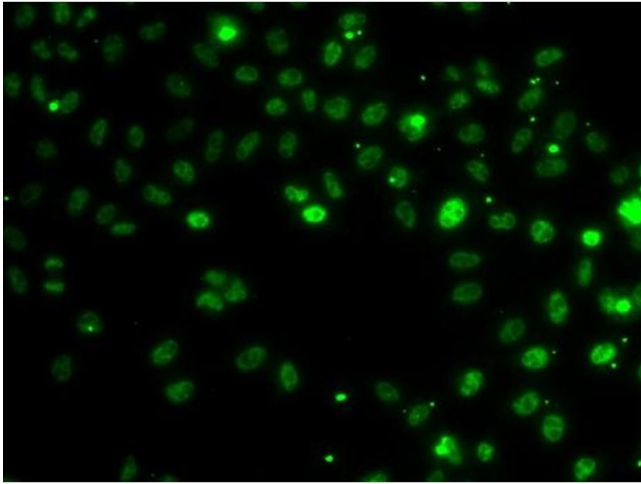
Buffer: PBS with 0.02 % sodium azide,50 % glycerol, pH 7.3.

Preservative: Sodium azide

Precaution of Use: This product contains Sodium azide: a POISONOUS AND HAZARDOUS SUBSTANCE which should be handled by trained staff only.

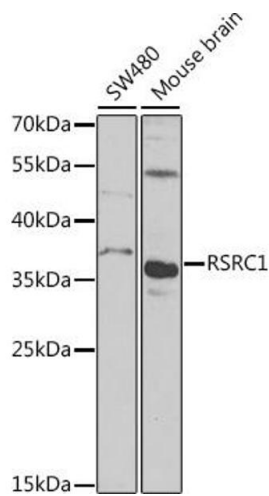
Storage: -20 °C

Storage Comment: Store at -20°C. Avoid freeze / thaw cycles.



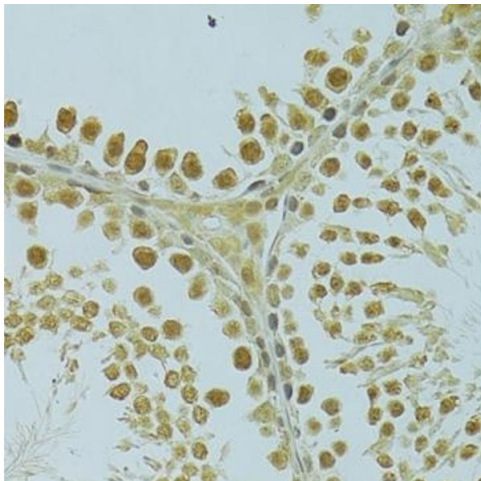
Immunofluorescence

Image 1. Immunofluorescence analysis of MCF-7 cells using RSRC1 antibody (ABIN6131423, ABIN6147283, ABIN6147284 and ABIN6223040).



Western Blotting

Image 2. Western blot analysis of extracts of various cell lines, using RSRC1 antibody (ABIN6131423, ABIN6147283, ABIN6147284 and ABIN6223040) at 1:1000 dilution. Secondary antibody: HRP Goat Anti-Rabbit IgG (H+L) (ABIN1684268 and ABIN3020597) at 1:10000 dilution. Lysates/proteins: 25 µg per lane. Blocking buffer: 3 % nonfat dry milk in TBST. Detection: ECL Basic Kit (RM00020). Exposure time: 90s.



Immunohistochemistry

Image 3. Immunohistochemistry of paraffin-embedded rat testis using RSRC1 antibody (ABIN6131423, ABIN6147283, ABIN6147284 and ABIN6223040) at dilution of 1:100 (40x lens). Perform microwave antigen retrieval with 10 mM PBS buffer pH 7.2 before commencing with IHC staining protocol.

Please check the [product details page](#) for more images. Overall 5 images are available for ABIN6147283.