



[Go to Product page](#)

Datasheet for ABIN6147287
anti-C22orf28 antibody (AA 236-505)

1 Image

Overview

Quantity:	100 µL
Target:	C22orf28
Binding Specificity:	AA 236-505
Reactivity:	Human
Host:	Rabbit
Clonality:	Polyclonal
Conjugate:	This C22orf28 antibody is un-conjugated
Application:	Western Blotting (WB)

Product Details

Immunogen:	Recombinant fusion protein containing a sequence corresponding to amino acids 236-505 of human RTCB (NP_055121.1).
Sequence:	EIFNEYAAKK MGIDHKGQVC VMIHSGSRGL GHQVATDALV AMEKAMKRDK IIVNDRQLAC ARIASPEGQD YLKGMAAAGN YAWVNRSSMT FLTRQFAKAV FNTTPDDL DL HVIYDVSHNI AKVEQHVV DG KERTLLVHRK GSTRAFP PHH PLIAVDYQLT GQPV LIGGTM GTCSYVLTGT EQGMTETFGT TCHGAGRALS RAKSRRNLDF QDVL DKLADM GIAIRVASPK LVMEEAPESY KNVTDVVNTC HDAGISKKAI KLRPIAVIKG
Isotype:	IgG
Cross-Reactivity:	Human, Mouse, Rat
Characteristics:	Polyclonal Antibodies

Target Details

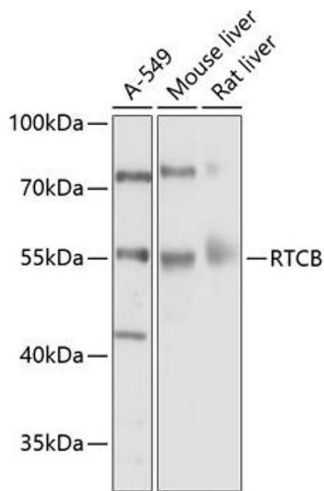
Target:	C22orf28
Alternative Name:	RTCB (C22orf28 Products)
Background:	Catalytic subunit of the tRNA-splicing ligase complex that acts by directly joining spliced tRNA halves to mature-sized tRNAs by incorporating the precursor-derived splice junction phosphate into the mature tRNA as a canonical 3',5'-phosphodiester. May act as an RNA ligase with broad substrate specificity, and may function toward other RNAs.,RTCB,C22orf28,DJ149A16.6,FAAP,HSPC117,Epigenetics & Nuclear Signaling,RNA Binding,Cell Biology & Developmental Biology,RTCB
Molecular Weight:	55 kDa
Gene ID:	51493
UniProt:	Q9Y3I0

Application Details

Application Notes:	WB,1:500 - 1:2000
Restrictions:	For Research Use only

Handling

Format:	Liquid
Buffer:	PBS with 0.02 % sodium azide,50 % glycerol, pH 7.3.
Preservative:	Sodium azide
Precaution of Use:	This product contains Sodium azide: a POISONOUS AND HAZARDOUS SUBSTANCE which should be handled by trained staff only.
Storage:	-20 °C
Storage Comment:	Store at -20°C. Avoid freeze / thaw cycles.



Western Blotting

Image 1. Western blot analysis of extracts of various cell lines, using RTCB Antibody (ABIN6127939, ABIN6147287, ABIN6147288 and ABIN6214508) at 1:1000 dilution. Secondary antibody: HRP Goat Anti-Rabbit IgG (H+L) (ABIN1684268 and ABIN3020597) at 1:10000 dilution. Lysates/proteins: 25 µg per lane. Blocking buffer: 3 % nonfat dry milk in TBST. Detection: ECL Basic Kit (RM00020). Exposure time: 10s.