

Datasheet for ABIN6147306  
**anti-RUFY3 antibody (AA 1-65)**



[Go to Product page](#)

1 Image

## Overview

Quantity:	100 µL
Target:	RUFY3
Binding Specificity:	AA 1-65
Reactivity:	Human
Host:	Rabbit
Clonality:	Polyclonal
Conjugate:	This RUFY3 antibody is un-conjugated
Application:	Western Blotting (WB)

## Product Details

Immunogen:	Recombinant fusion protein containing a sequence corresponding to amino acids 1-65 of human RUFY3 (NP_055776.1).
Sequence:	MSALTPPTDM PTPTTDKITQ AAMETIYLCK FRVSMGDGEWL CLREDDISL TPDPEPTHEP PNYLM
Isotype:	IgG
Cross-Reactivity:	Mouse, Rat
Characteristics:	Polyclonal Antibodies

## Target Details

Target:	RUFY3
Alternative Name:	RUFY3 ( <a href="#">RUFY3 Products</a> )

## Target Details

---

**Background:** This gene encodes a RPIP8, UNC-14, and NESCA domain-containing protein that is required for maintenance of neuronal polarity. In addition, it has been implicated in mediation of gastric cancer cell migration and invasion via interaction with P21-activated kinase-1, which promotes its expression. The encoded protein localizes to F-actin-enriched invadopodia to induce formation of protrusions, thereby facilitating cell migration. Alternative splicing results in multiple transcript variants.,RUFY3,RIPX,SINGAR1,ZFYVE30,Signal Transduction,G protein signaling,Signal Transduction,RUFY3

**Molecular Weight:** 52 kDa/55 kDa/64 kDa/70 kDa

**Gene ID:** 22902

**UniProt:** [Q7L099](#)

## Application Details

---

**Application Notes:** WB,1:500 - 1:2000

**Comment:** HIGH QUALITY

**Restrictions:** For Research Use only

## Handling

---

**Format:** Liquid

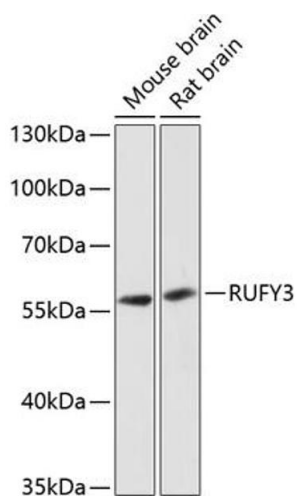
**Buffer:** PBS with 0.02 % sodium azide,50 % glycerol, pH 7.3.

**Preservative:** Sodium azide

**Precaution of Use:** This product contains Sodium azide: a POISONOUS AND HAZARDOUS SUBSTANCE which should be handled by trained staff only.

**Storage:** -20 °C

**Storage Comment:** Store at -20°C. Avoid freeze / thaw cycles.



### Western Blotting

**Image 1.** Western blot analysis of extracts of various cell lines, using RUFY3 antibody at 1:3000 dilution. Secondary antibody: HRP Goat Anti-Rabbit IgG (H+L) (ABIN1684268 and ABIN3020597) at 1:10000 dilution. Lysates/proteins: 25 µg per lane. Blocking buffer: 3% nonfat dry milk in TBST. Detection: ECL Basic Kit (RM00020). Exposure time: 90s.