

Datasheet for ABIN6147322  
**anti-RUVBL2 antibody (AA 1-463)**



[Go to Product page](#)

4 Images

## Overview

Quantity:	100 µL
Target:	RUVBL2
Binding Specificity:	AA 1-463
Reactivity:	Human
Host:	Rabbit
Clonality:	Polyclonal
Conjugate:	This RUVBL2 antibody is un-conjugated
Application:	Western Blotting (WB)

## Product Details

Immunogen:	Recombinant fusion protein containing a sequence corresponding to amino acids 1-463 of human Reptin/Reptin/RUVBL2 (NP_006657.1).
Sequence:	MATVTATTKV PEIRDVTRIE RIGAHSHIRG LGLDDALEPR QASQGMVGQL AARRAAGVVL EMIREGKIAG RAVLIAGQPG TGKTAIAMGM AQALGPDTPF TAIAGSEIFS LEMSKTEALT QAFRRSIGVR IKEETEIIEG EVVEIQIDRP ATGTGSKVVK LTLKTTEMET IYDLGTMKIE SLTKDKVQAG DVITIDKATG KISKLGRSFT RARDYDAMGS QTKFVQCPDG ELQKRKEVVH TVSLHEIDVI NSRTQGFLAL FSGDTGEIKS EVREQINAKV AEWREEGKAE IIPGVLFIDE VHMLDIESFS FLNRALES DM APVLIMATNR GITRIRGTSY QSPHGIPIDL LDRLLIVSTT PYSEKDTKQI LRIRCEEEDV EMSEDAYTVL TRIGLETSLR YAIQLITAAS LVCRKRKGTE VQVDDIKRVY SLFLDESRST QYMKEYQDAF LFNELKGETM DTS
Isotype:	IgG

## Product Details

---

Cross-Reactivity: Human, Mouse, Rat

Characteristics: Polyclonal Antibodies

## Target Details

---

Target: RUVBL2

Alternative Name: RUVBL2 ([RUVBL2 Products](#))

Background: This gene encodes the second human homologue of the bacterial RuvB gene. Bacterial RuvB protein is a DNA helicase essential for homologous recombination and DNA double-strand break repair. Functional analysis showed that this gene product has both ATPase and DNA helicase activities. This gene is physically linked to the CGB/LHB gene cluster on chromosome 19q13.3, and is very close (55 nt) to the LHB gene, in the opposite orientation. RUVBL2, CGI-46, ECP-51, ECP51, INO80J, REPTIN, RVB2, TAP54-beta, TIH2, TIP48, TIP49B, Epigenetics & Nuclear Signaling, DNA Damage & Repair, RUVBL2

Molecular Weight: 46 kDa/51 kDa

Gene ID: 10856

UniProt: [Q9Y230](#)

Pathways: [Telomere Maintenance](#)

## Application Details

---

Application Notes: WB, 1:500 - 1:2000

Comment: HIGH QUALITY

Restrictions: For Research Use only

## Handling

---

Format: Liquid

Buffer: PBS with 0.02 % sodium azide, 50 % glycerol, pH 7.3.

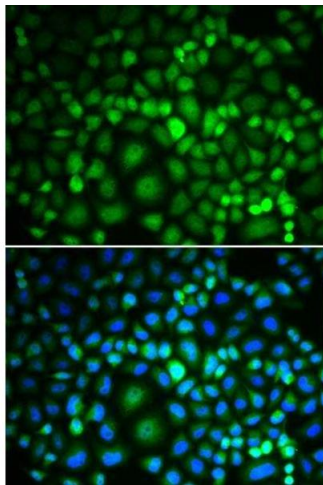
Preservative: Sodium azide

Precaution of Use: This product contains Sodium azide: a POISONOUS AND HAZARDOUS SUBSTANCE which should be handled by trained staff only.

Storage: -20 °C

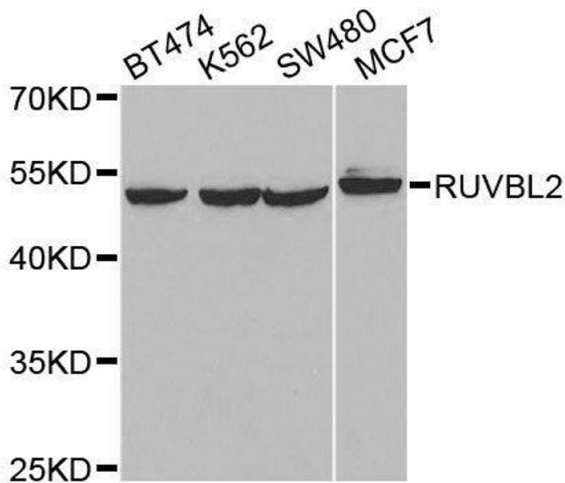
Storage Comment: Store at -20°C. Avoid freeze / thaw cycles.

Images



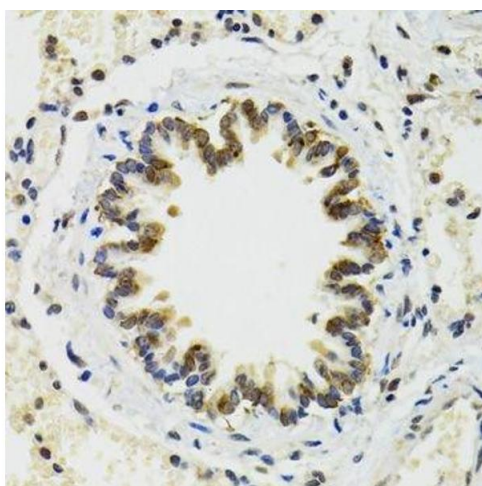
**Immunofluorescence**

**Image 1.** Immunofluorescence analysis of MCF-7 cells using RUVBL2 antibody.



**Western Blotting**

**Image 2.** Western blot analysis of extracts of various cell lines, using RUVBL2 antibody.



**Immunohistochemistry (Paraffin-embedded Sections)**

**Image 3.** Immunohistochemistry of paraffin-embedded rat lung using RUVBL2 antibody.

Please check the [product details page](#) for more images. Overall 4 images are available for ABIN6147322.