

Datasheet for ABIN6147336
anti-S100A12 antibody (AA 1-92)

5 Images

1 Publication

[Go to Product page](#)

Overview

Quantity:	100 µL
Target:	S100A12
Binding Specificity:	AA 1-92
Reactivity:	Human
Host:	Rabbit
Clonality:	Polyclonal
Conjugate:	This S100A12 antibody is un-conjugated
Application:	Immunohistochemistry (IHC), Western Blotting (WB), Immunofluorescence (IF)

Product Details

Immunogen:	Recombinant fusion protein containing a sequence corresponding to amino acids 1-92 of human S100A12 (NP_005612.1).
Sequence:	MTKLEEHLEG IVNIFHQYSV RKGHFDTLSK GELKQLLTKE LANTIKNIKD KAVIDEIFQG LDANQDEQVD FQEFISLVAI ALKAAHYHTH KE
Isotype:	IgG
Cross-Reactivity:	Human, Mouse, Rat
Characteristics:	Polyclonal Antibodies

Target Details

Target:	S100A12
---------	---------

Target Details

Alternative Name:	S100A12 (S100A12 Products)
Background:	<p>The protein encoded by this gene is a member of the S100 family of proteins containing 2 EF-hand calcium-binding motifs. S100 proteins are localized in the cytoplasm and/or nucleus of a wide range of cells, and involved in the regulation of a number of cellular processes such as cell cycle progression and differentiation. S100 genes include at least 13 members which are located as a cluster on chromosome 1q21. This protein is proposed to be involved in specific calcium-dependent signal transduction pathways and its regulatory effect on cytoskeletal components may modulate various neutrophil activities. The protein includes an antimicrobial peptide which has antibacterial activity.,S100A12,CAAF1,CAGC,CGRP,ENRAGE,MRP-6,MRP6,p6,Signal Transduction,Immunology & Inflammation,Cytokines,Cell Intrinsic Innate Immunity Signaling Pathway,Neuroscience,Calcium Signaling,S100A12</p>
Molecular Weight:	10 kDa
Gene ID:	6283
UniProt:	P80511
Pathways:	Toll-Like Receptors Cascades , S100 Proteins

Application Details

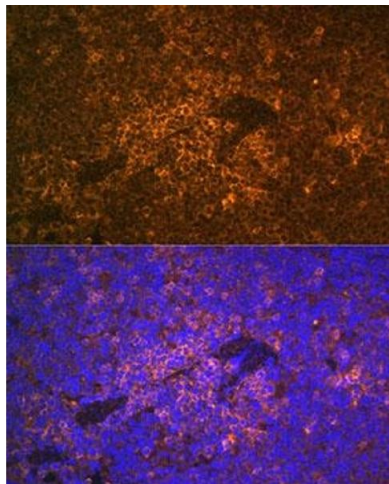
Application Notes:	WB,1:500 - 1:2000,IHC,1:50 - 1:200,IF,1:50 - 1:200
Comment:	HIGH QUALITY
Restrictions:	For Research Use only

Handling

Format:	Liquid
Buffer:	PBS with 0.02 % sodium azide,50 % glycerol, pH 7.3.
Preservative:	Sodium azide
Precaution of Use:	This product contains Sodium azide: a POISONOUS AND HAZARDOUS SUBSTANCE which should be handled by trained staff only.
Storage:	-20 °C
Storage Comment:	Store at -20°C. Avoid freeze / thaw cycles.

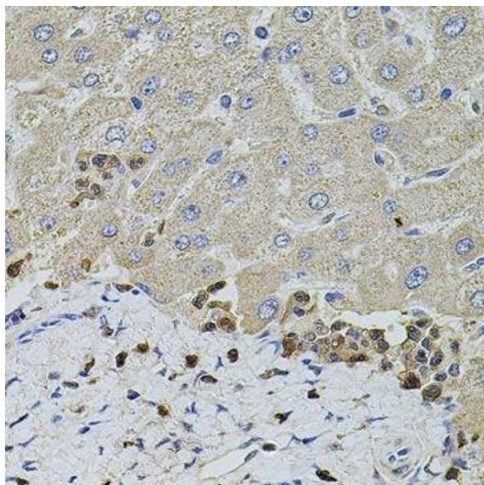
Product cited in: Deng, Zou, Xiong, Wang, Engelhardt, Ye, Yan, Qiu: "Human Parvovirus Infection of Human Airway Epithelia Induces Pyroptotic Cell Death by Inhibiting Apoptosis." in: **Journal of virology**, Vol. 91, Issue 24, (2017) ([PubMed](#)).

Images



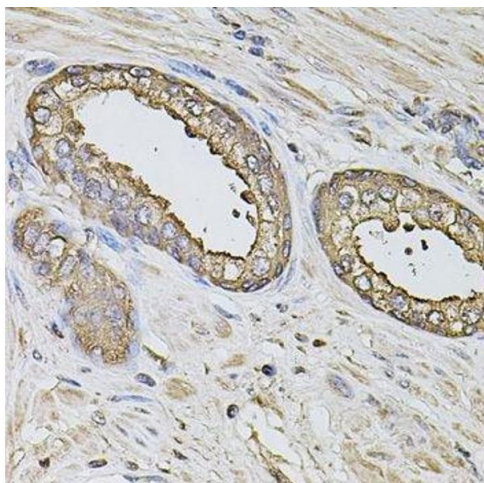
Immunohistochemistry

Image 1. Immunohistochemistry of paraffin-embedded human esophagus using S100 Rabbit pAb (ABIN6129321, ABIN6147336, ABIN6147338 and ABIN6220958) at dilution of 1:350 (40x lens). Perform high pressure antigen retrieval with 10 mM citrate buffer pH 6.0 before commencing with IHC staining protocol.



Immunohistochemistry (Paraffin-embedded Sections)

Image 2. Immunohistochemistry of paraffin-embedded human liver injury using S100A12 antibody.



Immunohistochemistry (Paraffin-embedded Sections)

Image 3. Immunohistochemistry of paraffin-embedded human prostate using S100A12 antibody.

Images

Please check the [product details page](#) for more images. Overall 5 images are available for ABIN6147336.