



[Go to Product page](#)

Datasheet for ABIN6147339
anti-S100A14 antibody (AA 1-104)

5 Images

Overview

Quantity:	100 µL
Target:	S100A14
Binding Specificity:	AA 1-104
Reactivity:	Human
Host:	Rabbit
Clonality:	Polyclonal
Conjugate:	This S100A14 antibody is un-conjugated
Application:	Immunohistochemistry (IHC), Western Blotting (WB), Immunofluorescence (IF)

Product Details

Immunogen:	Recombinant fusion protein containing a sequence corresponding to amino acids 1-104 of human S100A14 (NP_065723.1).
Sequence:	MGQCRSANA E DAQEFSDVER AIETLIKNFH QYSVEGGKET LTPSELRLDV TQQLPHLMPS NCGLEEKIAN LGSCNSDKLE FRSFWELIGE AAKSVKLERP VRGH
Isotype:	IgG
Cross-Reactivity:	Human, Mouse, Rat
Characteristics:	Polyclonal Antibodies

Target Details

Target:	S100A14
---------	---------

Target Details

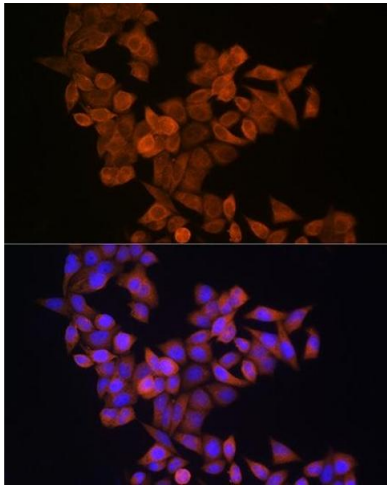
Alternative Name:	S100A14 (S100A14 Products)
Background:	This gene encodes a member of the S100 protein family which contains an EF-hand motif and binds calcium. The gene is located in a cluster of S100 genes on chromosome 1. Levels of the encoded protein have been found to be lower in cancerous tissue and associated with metastasis suggesting a tumor suppressor function (PMID: 19956863, 19351828),.,S100A14,BCMP84,S100A15,S100A14
Molecular Weight:	11 kDa
Gene ID:	57402
UniProt:	Q9HCY8
Pathways:	Activation of Innate immune Response, S100 Proteins

Application Details

Application Notes:	WB,1:500 - 1:2000,IHC,1:50 - 1:200,IF,1:50 - 1:200
Restrictions:	For Research Use only

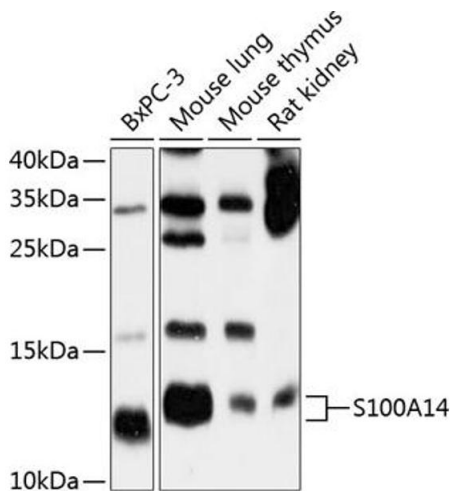
Handling

Format:	Liquid
Buffer:	PBS with 0.02 % sodium azide,50 % glycerol, pH 7.3.
Preservative:	Sodium azide
Precaution of Use:	This product contains Sodium azide: a POISONOUS AND HAZARDOUS SUBSTANCE which should be handled by trained staff only.
Storage:	-20 °C
Storage Comment:	Store at -20°C. Avoid freeze / thaw cycles.



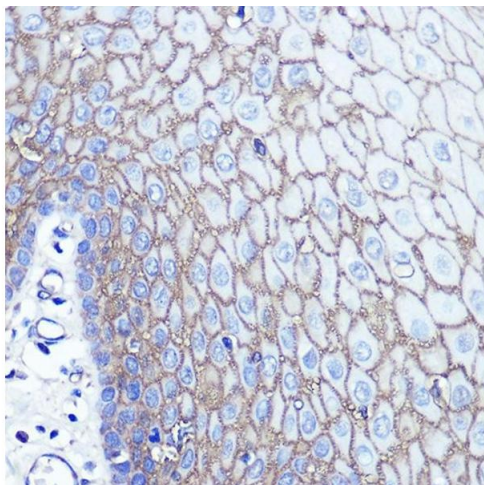
Immunofluorescence

Image 1. Immunofluorescence analysis of HeLa cells using S100 Rabbit pAb (ABIN6128693, ABIN6147339, ABIN6147340 and ABIN6214636) at dilution of 1:100 (40x lens). Blue: DAPI for nuclear staining.



Western Blotting

Image 2. Western blot analysis of extracts of various cell lines, using S100 antibody (ABIN6128693, ABIN6147339, ABIN6147340 and ABIN6214636) at 1:1000 dilution. Secondary antibody: HRP Goat Anti-Rabbit IgG (H+L) (ABIN1684268 and ABIN3020597) at 1:10000 dilution. Lysates/proteins: 25 µg per lane. Blocking buffer: 3 % nonfat dry milk in TBST. Detection: ECL Basic Kit (RM00020). Exposure time: 30s.



Immunohistochemistry

Image 3. Immunohistochemistry of paraffin-embedded human esophageal using S100 Rabbit pAb (ABIN6128693, ABIN6147339, ABIN6147340 and ABIN6214636) at dilution of 1:100 (40x lens). Perform microwave antigen retrieval with 10 mM PBS buffer pH 7.2 before commencing with IHC staining protocol.

Please check the [product details page](#) for more images. Overall 5 images are available for ABIN6147339.