

Datasheet for ABIN6147343
anti-S100A2 antibody (AA 1-97)[Go to Product page](#)

1 Image

Overview

Quantity:	100 µL
Target:	S100A2
Binding Specificity:	AA 1-97
Reactivity:	Human
Host:	Rabbit
Clonality:	Polyclonal
Conjugate:	This S100A2 antibody is un-conjugated
Application:	Western Blotting (WB)

Product Details

Immunogen:	Recombinant fusion protein containing a sequence corresponding to amino acids 1-97 of human S100A2 (NP_005969.1).
Sequence:	MCSSLEQALA VLVTTFFHKYS CQEGDKFKLS KGEMKELLHK ELPSFVGEKV DEEGLKKLMG SLDENSDDQV DFQEYAVFLA LITVMCNDFF QGCPDRP
Isotype:	IgG
Cross-Reactivity:	Human, Mouse
Characteristics:	Polyclonal Antibodies

Target Details

Target:	S100A2
---------	--------

Target Details

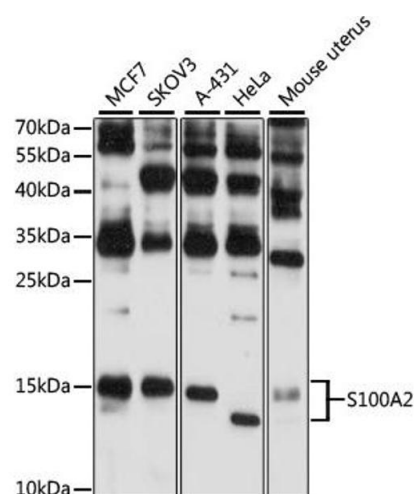
Alternative Name:	S100A2 (S100A2 Products)
Background:	<p>The protein encoded by this gene is a member of the S100 family of proteins containing 2 EF-hand calcium-binding motifs. S100 proteins are localized in the cytoplasm and/or nucleus of a wide range of cells, and involved in the regulation of a number of cellular processes such as cell cycle progression and differentiation. S100 genes include at least 13 members which are located as a cluster on chromosome 1q21. This protein may have a tumor suppressor function. Chromosomal rearrangements and altered expression of this gene have been implicated in breast cancer.,S100A2,CAN19,S100L,Signal Transduction,Cell Biology & Developmental Biology,Cell Cycle,Cell differentiation,Neuroscience,Calcium Signaling,S100A2</p>
Molecular Weight:	11 kDa
Gene ID:	6273
UniProt:	P29034
Pathways:	S100 Proteins

Application Details

Application Notes:	WB,1:1000 - 1:2000
Restrictions:	For Research Use only

Handling

Format:	Liquid
Buffer:	PBS with 0.02 % sodium azide,50 % glycerol, pH 7.3.
Preservative:	Sodium azide
Precaution of Use:	This product contains Sodium azide: a POISONOUS AND HAZARDOUS SUBSTANCE which should be handled by trained staff only.
Storage:	-20 °C
Storage Comment:	Store at -20°C. Avoid freeze / thaw cycles.



Western Blotting

Image 1. Western blot analysis of extracts of various cell lines, using S100 antibody (ABIN6128692, ABIN6147343, ABIN6147344 and ABIN6216356) at 1:3000 dilution. Secondary antibody: HRP Goat Anti-Rabbit IgG (H+L) (ABIN1684268 and ABIN3020597) at 1:10000 dilution. Lysates/proteins: 25 µg per lane. Blocking buffer: 3 % nonfat dry milk in TBST. Detection: ECL Basic Kit (RM00020). Exposure time: 60s.