

Datasheet for ABIN6147345  
**anti-S100A9 antibody (AA 1-114)**

## 5 Images

[Go to Product page](#)

## Overview

Quantity:	100 µL
Target:	S100A9
Binding Specificity:	AA 1-114
Reactivity:	Human
Host:	Rabbit
Clonality:	Polyclonal
Conjugate:	This S100A9 antibody is un-conjugated
Application:	Western Blotting (WB), Immunohistochemistry (IHC), Immunofluorescence (IF)

## Product Details

Immunogen:	Recombinant fusion protein containing a sequence corresponding to amino acids 1-114 of human S100A9 (NP_002956.1).
Sequence:	MTCKMSQLER NIETIINTFH QYSVKLGHPD TLNQGEFKEL VRKDLQNFLK KENKNEKVIE HIMEDLDTNA DKQLSFEEFI MLMARLTWAS HEKMHEGDEG PGHHHKPGLG EGTP
Isotype:	IgG
Cross-Reactivity:	Human, Mouse, Rat
Characteristics:	Polyclonal Antibodies

## Target Details

Target:	S100A9
---------	--------

## Target Details

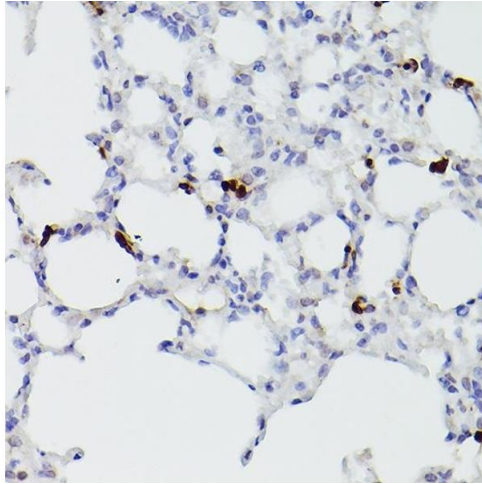
Alternative Name:	S100A9 ( <a href="#">S100A9 Products</a> )
Background:	<p>The protein encoded by this gene is a member of the S100 family of proteins containing 2 EF-hand calcium-binding motifs. S100 proteins are localized in the cytoplasm and/or nucleus of a wide range of cells, and involved in the regulation of a number of cellular processes such as cell cycle progression and differentiation. S100 genes include at least 13 members which are located as a cluster on chromosome 1q21. This protein may function in the inhibition of casein kinase and altered expression of this protein is associated with the disease cystic fibrosis. This antimicrobial protein exhibits antifungal and antibacterial activity.,S100A9,60B8AG,CAGB,CFAG,CGLB,L1AG,LIAG,MAC387,MIF,MRP14,NIF,P14,Cancer,Tumor biomarkers,Signal Transduction,Immunology &amp; Inflammation,Cell Intrinsic Innate Immunity Signaling Pathway,Neuroscience,Calcium Signaling,S100A9</p>
Molecular Weight:	13 kDa
Gene ID:	6280
UniProt:	<a href="#">P06702</a>
Pathways:	<a href="#">Transition Metal Ion Homeostasis</a> , <a href="#">Positive Regulation of Endopeptidase Activity</a> , <a href="#">S100 Proteins</a>

## Application Details

Application Notes:	WB,1:500 - 1:2000,IHC,1:50 - 1:200,IF,1:50 - 1:200
Comment:	HIGH QUALITY
Restrictions:	For Research Use only

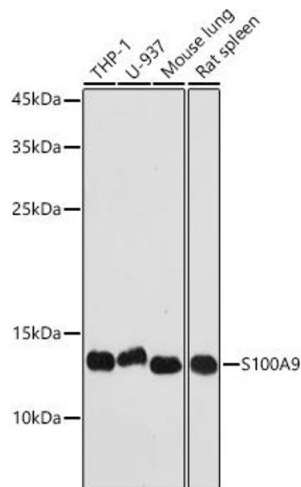
## Handling

Format:	Liquid
Buffer:	PBS with 0.02 % sodium azide,50 % glycerol, pH 7.3.
Preservative:	Sodium azide
Precaution of Use:	This product contains Sodium azide: a POISONOUS AND HAZARDOUS SUBSTANCE which should be handled by trained staff only.
Storage:	-20 °C
Storage Comment:	Store at -20°C. Avoid freeze / thaw cycles.



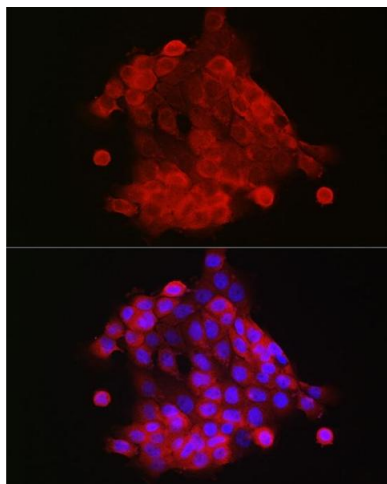
### Immunohistochemistry

**Image 1.** Immunohistochemistry of paraffin-embedded mouse lung using S100 Rabbit pAb (842) at dilution of 1:100 (40x lens). Perform high pressure antigen retrieval with 10 mM citrate buffer pH 6.0 before commencing with IHC staining protocol.



### Western Blotting

**Image 2.** Western blot analysis of extracts of various cell lines, using S100 antibody (842) at 1:1000 dilution. Secondary antibody: HRP Goat Anti-Rabbit IgG (H+L) (ABIN1684268 and ABIN3020597) at 1:10000 dilution. Lysates/proteins: 25 µg per lane. Blocking buffer: 3 % nonfat dry milk in TBST. Detection: ECL Basic Kit (RM00020). Exposure time: 90s.



### Immunofluorescence

**Image 3.** Immunofluorescence analysis of cells using S100 Rabbit pAb (842) at dilution of 1:150 (40x lens). Blue: DAPI for nuclear staining.

Please check the [product details page](#) for more images. Overall 5 images are available for ABIN6147345.