



[Go to Product page](#)

Datasheet for ABIN6147357  
**anti-SAFB antibody (AA 1-200)**

14 Images

Overview

Quantity:	100 µL
Target:	SAFB
Binding Specificity:	AA 1-200
Reactivity:	Human
Host:	Rabbit
Clonality:	Polyclonal
Conjugate:	This SAFB antibody is un-conjugated
Application:	Western Blotting (WB), Immunofluorescence (IF), Immunohistochemistry (IHC)

Product Details

Immunogen:	Recombinant fusion protein containing a sequence corresponding to amino acids 1-200 of human SAFB (NP_001188267.1).
Sequence:	MAETLSGLGD SGAAGAAALS SASSETGTRR LSDLRVIDLR AELRKRNVDS SGNKSVLMER LKKAIEDEGG NPDEIEITSE GNKKTSKRSS KGRKPEEEGV EDNGLEENSG DGQEDVETSL ENLQDIDIMD ISVLDEAEID NGSVADCVED DDADNLQESL SDSRELVEGE MKELPEQLQE HAIEDKETIN NLDTSSSDFT
Isotype:	IgG
Cross-Reactivity:	Human, Mouse, Rat
Characteristics:	Polyclonal Antibodies

## Target Details

---

Target:	SAFB
Alternative Name:	SAFB ( <a href="#">SAFB Products</a> )
Background:	<p>This gene encodes a DNA-binding protein which has high specificity for scaffold or matrix attachment region DNA elements (S/MAR DNA). This protein is thought to be involved in attaching the base of chromatin loops to the nuclear matrix but there is conflicting evidence as to whether this protein is a component of chromatin or a nuclear matrix protein. Scaffold attachment factors are a specific subset of nuclear matrix proteins (NMP) that specifically bind to S/MAR. The encoded protein is thought to serve as a molecular base to assemble a 'transcriptosome complex' in the vicinity of actively transcribed genes. It is involved in the regulation of heat shock protein 27 transcription, can act as an estrogen receptor co-repressor and is a candidate for breast tumorigenesis. This gene is arranged head-to-head with a similar gene whose product has the same functions. Multiple transcript variants encoding different isoforms have been found for this gene.,SAFB,HAP,HET,SAB-B1,SAF-B,SAF-B1,SAFB1,Epigenetics &amp; Nuclear Signaling,RNA Binding,SAFB</p>
Molecular Weight:	95 kDa/102 kDa
Gene ID:	6294
UniProt:	<a href="#">Q15424</a>
Pathways:	<a href="#">Intracellular Steroid Hormone Receptor Signaling Pathway</a>

## Application Details

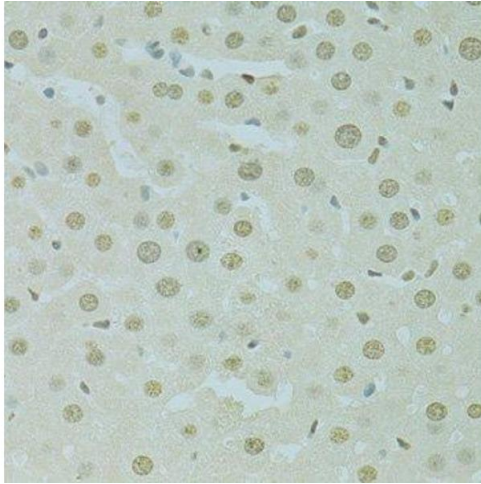
---

Application Notes:	WB,1:500 - 1:2000,IHC,1:50 - 1:200,IF,1:50 - 1:200
Restrictions:	For Research Use only

## Handling

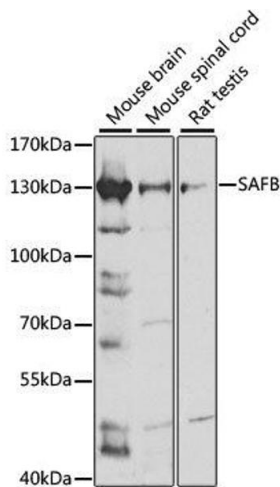
---

Format:	Liquid
Buffer:	PBS with 0.02 % sodium azide,50 % glycerol, pH 7.3.
Preservative:	Sodium azide
Precaution of Use:	This product contains Sodium azide: a POISONOUS AND HAZARDOUS SUBSTANCE which should be handled by trained staff only.
Storage:	-20 °C
Storage Comment:	Store at -20°C. Avoid freeze / thaw cycles.



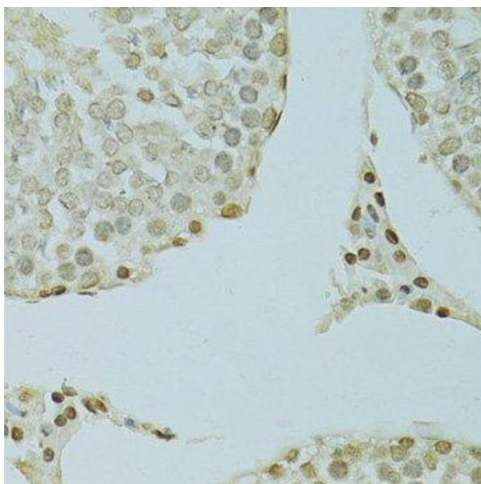
#### Immunohistochemistry (Paraffin-embedded Sections)

**Image 1.** Immunohistochemistry of paraffin-embedded rat liver using SAFB antibody.



#### Western Blotting

**Image 2.** Western blot analysis of extracts of various cell lines, using SAFB antibody.



#### Immunohistochemistry (Paraffin-embedded Sections)

**Image 3.** Immunohistochemistry of paraffin-embedded rat testis using SAFB antibody.

Please check the [product details page](#) for more images. Overall 14 images are available for ABIN6147357.