



[Go to Product page](#)

Datasheet for ABIN6147374  
**anti-SAP30BP antibody (AA 1-308)**

1 Image

Overview

Quantity:	100 µL
Target:	SAP30BP
Binding Specificity:	AA 1-308
Reactivity:	Human
Host:	Rabbit
Clonality:	Polyclonal
Conjugate:	This SAP30BP antibody is un-conjugated
Application:	Western Blotting (WB), Immunohistochemistry (IHC), Immunofluorescence (IF)

Product Details

Immunogen:	Recombinant fusion protein containing a sequence corresponding to amino acids 1-308 of human SAP30BP (NP_037392.1).
Sequence:	MAGKKNVLSS LAVYAEDSEP ESDGEAGIEA VGSAAEEKGG LVSDAYGEDD FSRLGGDEDG YEEEEEDENSR QSEDDDDSETE KPEADDPKDN TEAEKRDPQE LVASFSEVRV NMSPDEIKIP PEPPGRCSNH LQDKIQKLYE RKIKEGMDMN YIIQRKKEFR NPSIYEKLIQ FCAIDELGTN YPKDMFDPHG WSEDSYYEAL AKAQKIEMDK LEKAKKERTK IEFVTGTTKKG TTTNATSTTT TTASTAVADA QKRKSKWDSA IPVTTIAQPT ILTTTATLPA VVTVTTSASG SKTTVISAVG TIVKKAKQ
Isotype:	IgG
Cross-Reactivity:	Human, Mouse, Rat
Characteristics:	Polyclonal Antibodies

## Target Details

---

Target:	SAP30BP
Alternative Name:	SAP30BP ( <a href="#">SAP30BP Products</a> )
Background:	Plays a role in transcriptional repression by promoting histone deacetylase activity, leading to deacetylation of histone H3. May be involved in the regulation of beta-2-microglobulin genes (By similarity.,SAP30BP,HCNGP,HTRG,HTRP,Epigenetics & Nuclear Signaling,Cell Biology & Developmental Biology,Apoptosis,SAP30BP
Molecular Weight:	32 kDa/33 kDa
Gene ID:	29115
UniProt:	<a href="#">Q9UHR5</a>

## Application Details

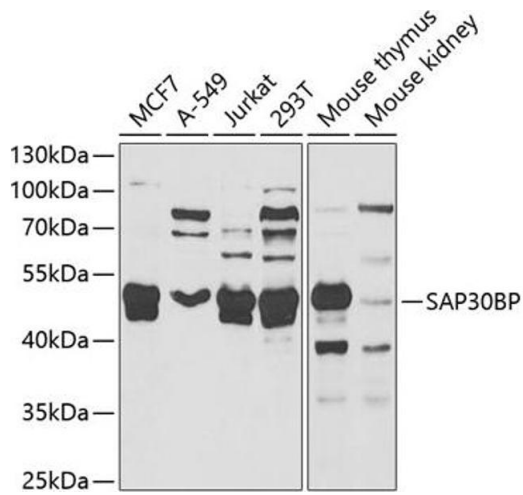
---

Application Notes:	WB,1:500 - 1:2000,IHC,1:50 - 1:200,IF,1:50 - 1:200
Restrictions:	For Research Use only

## Handling

---

Format:	Liquid
Buffer:	PBS with 0.02 % sodium azide,50 % glycerol, pH 7.3.
Preservative:	Sodium azide
Precaution of Use:	This product contains Sodium azide: a POISONOUS AND HAZARDOUS SUBSTANCE which should be handled by trained staff only.
Storage:	-20 °C
Storage Comment:	Store at -20°C. Avoid freeze / thaw cycles.



### Western Blotting

**Image 1.** Western blot analysis of extracts of various cell lines, using SBP antibody at 1:1000 dilution. Secondary antibody: HRP Goat Anti-Rabbit IgG (H+L) (ABIN1684268 and ABIN3020597) at 1:10000 dilution. Lysates/proteins: 25 µg per lane. Blocking buffer: 3% nonfat dry milk in TBST. Detection: ECL Basic Kit (RM00020). Exposure time: 90s.