



[Go to Product page](#)

Datasheet for ABIN6147394
anti-SAT1 antibody (AA 1-171)

1 Image

Overview

Quantity:	100 µL
Target:	SAT1
Binding Specificity:	AA 1-171
Reactivity:	Human
Host:	Rabbit
Clonality:	Polyclonal
Conjugate:	This SAT1 antibody is un-conjugated
Application:	Western Blotting (WB)

Product Details

Immunogen:	Recombinant fusion protein containing a sequence corresponding to amino acids 1-171 of human SAT1 (NP_002961.1).
Sequence:	MAKFVIRPAT AADCSDILRL IKELAKYEYM EEQVILTEKD LLEDGFGEHP FYHCLVAEVP KEHWTPEGHS IVGFAMYYFT YDPWIGKLLY LEDFFVMSDY RGFVIGSEIL KNLSQVAMRC RCSSMHFLVA EWNEPSINFY KRRGASDLSS EEGWRLFkid KEYLLKMATE E
Isotype:	IgG
Cross-Reactivity:	Human
Characteristics:	Polyclonal Antibodies

Target Details

Target:	SAT1
---------	------

Target Details

Alternative Name:	SAT1 (SAT1 Products)
Background:	The protein encoded by this gene belongs to the acetyltransferase family, and is a rate-limiting enzyme in the catabolic pathway of polyamine metabolism. It catalyzes the acetylation of spermidine and spermine, and is involved in the regulation of the intracellular concentration of polyamines and their transport out of cells. Defects in this gene are associated with keratosis follicularis spinulosa decalvans (KFSD). Alternatively spliced transcripts have been found for this gene.,DC21,KFSD,KFSDX,SAT,SSAT,SSAT-1,SAT1,Epigenetics & Nuclear Signaling,Cell Biology & Developmental Biology,SAT1

Molecular Weight:	20 kDa
-------------------	--------

Gene ID:	6303
----------	------

UniProt:	P21673
----------	------------------------

Application Details

Application Notes:	WB,1:500 - 1:2000
--------------------	-------------------

Restrictions:	For Research Use only
---------------	-----------------------

Handling

Format:	Liquid
---------	--------

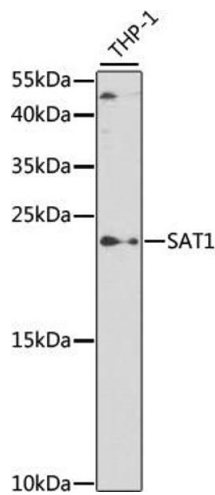
Buffer:	PBS with 0.02 % sodium azide,50 % glycerol, pH 7.3.
---------	---

Preservative:	Sodium azide
---------------	--------------

Precaution of Use:	This product contains Sodium azide: a POISONOUS AND HAZARDOUS SUBSTANCE which should be handled by trained staff only.
--------------------	--

Storage:	-20 °C
----------	--------

Storage Comment:	Store at -20°C. Avoid freeze / thaw cycles.
------------------	---



Western Blotting

Image 1. Western blot analysis of extracts of THP-1 cells, using S antibody (ABIN6130330, ABIN6147394, ABIN6147395 and ABIN6219585) at 1:500 dilution. Secondary antibody: HRP Goat Anti-Rabbit IgG (H+L) (ABIN1684268 and ABIN3020597) at 1:10000 dilution. Lysates/proteins: 25 µg per lane. Blocking buffer: 3 % nonfat dry milk in TBST. Detection: ECL Basic Kit (RM00020). Exposure time: 90s.