

Datasheet for ABIN6147396  
**anti-SATB1 antibody (AA 484-763)**



[Go to Product page](#)

5 Images

## Overview

Quantity:	100 µL
Target:	SATB1
Binding Specificity:	AA 484-763
Reactivity:	Human
Host:	Rabbit
Clonality:	Polyclonal
Conjugate:	This SATB1 antibody is un-conjugated
Application:	Western Blotting (WB), Immunohistochemistry (IHC), Immunofluorescence (IF)

## Product Details

Immunogen:	Recombinant fusion protein containing a sequence corresponding to amino acids 484-763 of human SATB1 (NP_001124482.1).
Sequence:	NGKPENNTMN INASIYDEIQ QEMKRAKVSQ ALFAKVAATK SQGWLCELLR WKEDPSPENR TLWENLSMIR RFLSLPQPER DAIYEQESNA VHHHGDRPPH IIVHPAEQIQ QQQQQQQQQQ QQQQAPPPPQ PQQQPQTGPR LPPRQPTVAS PAESDEENRQ KTRPRTKISV EALGILQSFI QDVGLYPDEE AIQTLSAQLD LPKYTIKFF QNQRYYLKHH GKLKDNSGLE VDVAEYKEEE LLKDLEESVQ DKNTNTLFSV KLEEELSVEG NTDINTDLKD
Isotype:	IgG
Cross-Reactivity:	Human, Mouse, Rat
Characteristics:	Polyclonal Antibodies

## Target Details

---

Target:	SATB1
Alternative Name:	SATB1 ( <a href="#">SATB1 Products</a> )
Background:	This gene encodes a matrix protein which binds nuclear matrix and scaffold-associating DNAs through a unique nuclear architecture. The protein recruits chromatin-remodeling factors in order to regulate chromatin structure and gene expression.,SATB1,Epigenetics & Nuclear Signaling,SATB1
Molecular Weight:	85 kDa/89 kDa
Gene ID:	6304
UniProt:	<a href="#">Q01826</a>
Pathways:	<a href="#">Caspase Cascade in Apoptosis, Activated T Cell Proliferation</a>

## Application Details

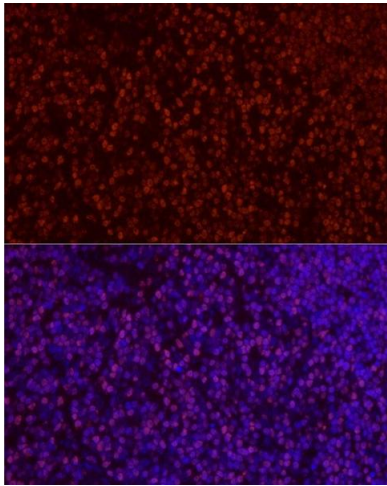
---

Application Notes:	WB,1:500 - 1:2000,IHC,1:50 - 1:100,IF,1:50 - 1:100
Comment:	HIGH QUALITY
Restrictions:	For Research Use only

## Handling

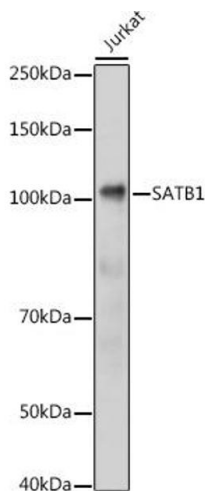
---

Format:	Liquid
Buffer:	PBS with 0.02 % sodium azide,50 % glycerol, pH 7.3.
Preservative:	Sodium azide
Precaution of Use:	This product contains Sodium azide: a POISONOUS AND HAZARDOUS SUBSTANCE which should be handled by trained staff only.
Storage:	-20 °C
Storage Comment:	Store at -20°C. Avoid freeze / thaw cycles.



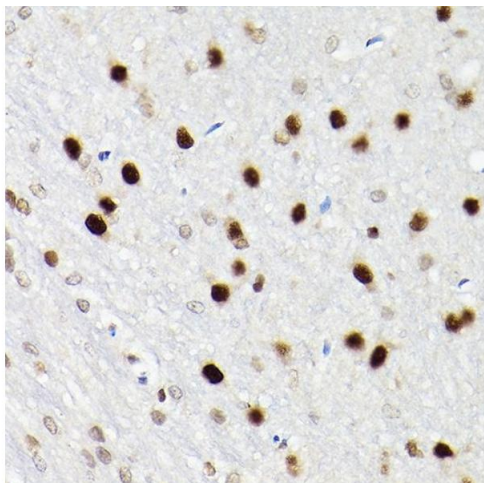
### Immunofluorescence

**Image 1.** Immunofluorescence analysis of rat thymus cells using S Rabbit pAb (ABIN6130296, ABIN6147396, ABIN6147398 and ABIN6221485) at dilution of 1:50 (40x lens). Blue: DAPI for nuclear staining.



### Western Blotting

**Image 2.** Western blot analysis of extracts of Jurkat cells, using S antibody (ABIN6130296, ABIN6147396, ABIN6147398 and ABIN6221485) at 1:1000 dilution. Secondary antibody: HRP Goat Anti-Rabbit IgG (H+L) (ABIN1684268 and ABIN3020597) at 1:10000 dilution. Lysates/proteins: 25 µg per lane. Blocking buffer: 3 % nonfat dry milk in TBST. Detection: ECL Basic Kit (RM00020). Exposure time: 1s.



### Immunohistochemistry

**Image 3.** Immunohistochemistry of paraffin-embedded rat brain using S Rabbit pAb (ABIN6130296, ABIN6147396, ABIN6147398 and ABIN6221485) at dilution of 1:200 (40x lens). Perform high pressure antigen retrieval with 10 mM citrate buffer pH 6.0 before commencing with IHC staining protocol.

Please check the [product details page](#) for more images. Overall 5 images are available for ABIN6147396.