

Datasheet for ABIN6147407
anti-SCAMP1 antibody (AA 1-150)[Go to Product page](#)

1 Image

Overview

Quantity:	100 µL
Target:	SCAMP1
Binding Specificity:	AA 1-150
Reactivity:	Human
Host:	Rabbit
Clonality:	Polyclonal
Conjugate:	This SCAMP1 antibody is un-conjugated
Application:	Western Blotting (WB)

Product Details

Immunogen:	Recombinant fusion protein containing a sequence corresponding to amino acids 1-150 of human SCAMP1 (NP_004857.4).
Sequence:	MSDFDSNPFA DPDLNNPFKD PSVTQVTRNV PPGLDEYNPF SDSRTPPPGG VKMPNVPNTQ PAIMKPTEEH PAYTQIAKEH ALAQAELLKR QEELERKAAE LDRREREMQN LSQHGRKNNW PPLPSNFPVG PCFYQDFSVD IPVEFQKTVK
Isotype:	IgG
Cross-Reactivity:	Human, Mouse, Rat
Characteristics:	Polyclonal Antibodies

Target Details

Target:	SCAMP1
---------	--------

Target Details

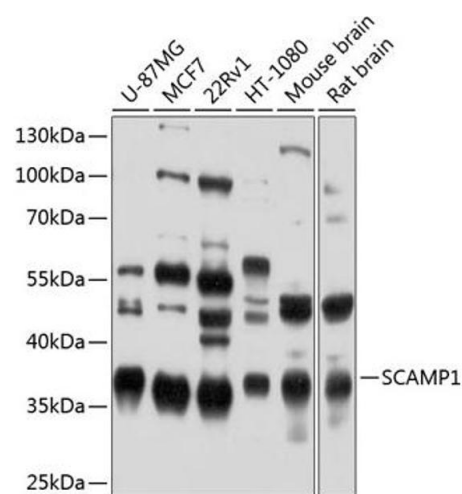
Alternative Name:	SCAMP1 (SCAMP1 Products)
Background:	<p>This gene product belongs to the SCAMP family of proteins, which are secretory carrier membrane proteins. They function as carriers to the cell surface in post-golgi recycling pathways. Different family members are highly related products of distinct genes, and are usually expressed together. These findings suggest that these protein family members may function at the same site during vesicular transport rather than in separate pathways. A pseudogene of this gene has been defined on chromosome 1. Alternative splicing results in multiple transcript variants.,SCAMP1,SCAMP,SCAMP37,Signal Transduction,Neuroscience,SCAMP1</p>
Molecular Weight:	18 kDa/37 kDa
Gene ID:	9522
UniProt:	O15126

Application Details

Application Notes:	WB,1:500 - 1:2000
Comment:	HIGH QUALITY
Restrictions:	For Research Use only

Handling

Format:	Liquid
Buffer:	PBS with 0.02 % sodium azide,50 % glycerol, pH 7.3.
Preservative:	Sodium azide
Precaution of Use:	This product contains Sodium azide: a POISONOUS AND HAZARDOUS SUBSTANCE which should be handled by trained staff only.
Storage:	-20 °C
Storage Comment:	Store at -20°C. Avoid freeze / thaw cycles.



Western Blotting

Image 1. Western blot analysis of extracts of various cell lines, using SC antibody (ABIN6128700, ABIN6147407, ABIN6147408 and ABIN6224885) at 1:1000 dilution. Secondary antibody: HRP Goat Anti-Rabbit IgG (H+L) (ABIN1684268 and ABIN3020597) at 1:10000 dilution. Lysates/proteins: 25 µg per lane. Blocking buffer: 3 % nonfat dry milk in TBST. Detection: ECL Enhanced Kit (RM00021). Exposure time: 1s.