

Datasheet for ABIN6147425
anti-SCG3 antibody (AA 199-468)



[Go to Product page](#)

4 Images

Overview

Quantity:	100 µL
Target:	SCG3
Binding Specificity:	AA 199-468
Reactivity:	Human
Host:	Rabbit
Clonality:	Polyclonal
Conjugate:	This SCG3 antibody is un-conjugated
Application:	Western Blotting (WB)

Product Details

Immunogen:	Recombinant fusion protein containing a sequence corresponding to amino acids 199-468 of human SCG3 (NP_037375.2).
Sequence:	KLISKEANNY EEDPNKPTSW TENQAGKIPE KVTPMAAIQD GLAKGENDET VSNTLTLTNG LERRTKTYSE DNFEELQYFP NFYALLKSID SEKEAKEKET LITIMKTLID FVKMMVKYGT ISPEEGVSYL ENLDEMIALQ TKNKLEKNAT DNISKLPAP SEKSHEETDS TKEEAAKMEK EYGSLKDSTK DDNSNPGGKT DEPKGKTEAY LEAIRKNIEW LKKHDKKGNK EDYDLSKMRD FINKQADAYV EKGILDKEEA EAIKRIYSSL
Isotype:	IgG
Cross-Reactivity:	Human, Mouse, Rat
Characteristics:	Polyclonal Antibodies

Target Details

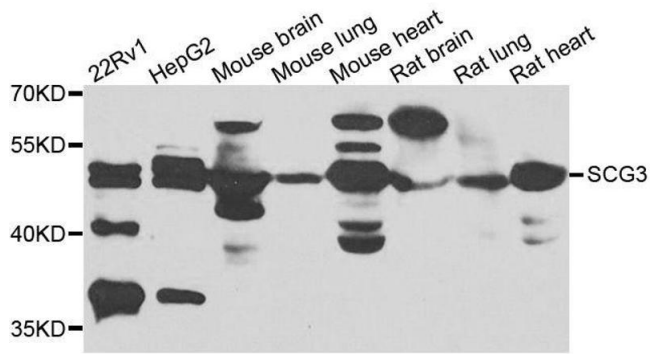
Target:	SCG3
Alternative Name:	SCG3 (SCG3 Products)
Background:	<p>The protein encoded by this gene is a member of the chromogranin/secretogranin family of neuroendocrine secretory proteins. Granins may serve as precursors for biologically active peptides. Some granins have been shown to function as helper proteins in sorting and proteolytic processing of prohormones, however, the function of this protein is unknown. Two transcript variants encoding different isoforms have been found for this gene.,SCG3,SGIII,Epigenetics & Nuclear Signaling,RNA Binding,Cancer,Endocrine & Metabolism,Neuroscience,SCG3</p>
Molecular Weight:	26 kDa/53 kDa
Gene ID:	29106
UniProt:	Q8WXD2

Application Details

Application Notes:	WB,1:500 - 1:2000
Comment:	HIGH QUALITY
Restrictions:	For Research Use only

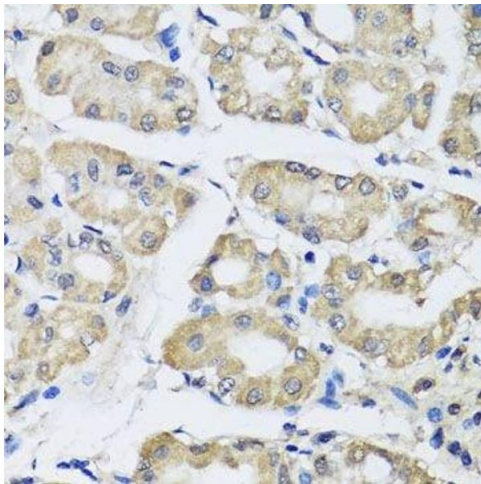
Handling

Format:	Liquid
Buffer:	PBS with 0.02 % sodium azide,50 % glycerol, pH 7.3.
Preservative:	Sodium azide
Precaution of Use:	This product contains Sodium azide: a POISONOUS AND HAZARDOUS SUBSTANCE which should be handled by trained staff only.
Storage:	-20 °C
Storage Comment:	Store at -20°C. Avoid freeze / thaw cycles.



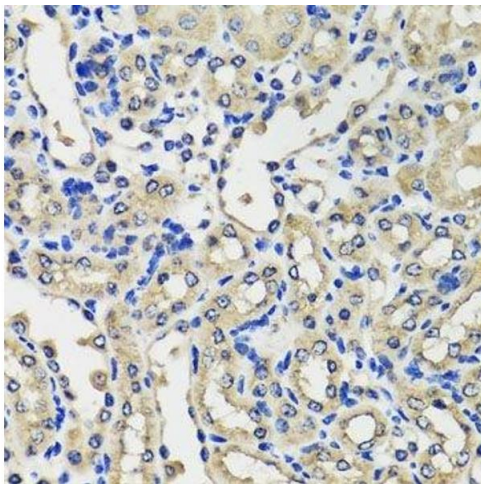
Western Blotting

Image 1. Western blot analysis of extracts of various cell lines, using SCG3 antibody.



Immunohistochemistry (Paraffin-embedded Sections)

Image 2. Immunohistochemistry of paraffin-embedded human stomach using SCG3 antibody.



Immunohistochemistry (Paraffin-embedded Sections)

Image 3. Immunohistochemistry of paraffin-embedded mouse kidney using SCG3 antibody.

Please check the [product details page](#) for more images. Overall 4 images are available for ABIN6147425.