



[Go to Product page](#)

Datasheet for ABIN6147433
anti-SCN1B antibody (AA 19-160)

1 Image

Overview

Quantity:	100 µL
Target:	SCN1B
Binding Specificity:	AA 19-160
Reactivity:	Human
Host:	Rabbit
Clonality:	Polyclonal
Conjugate:	This SCN1B antibody is un-conjugated
Application:	Western Blotting (WB), Immunohistochemistry (IHC)

Product Details

Immunogen:	Recombinant fusion protein containing a sequence corresponding to amino acids 19-160 of human SCN1B (NP_950238.1).
Sequence:	GGCVEVDSET EAVYGMTEFKI LCISCKRRSE TNAETFTTEWT FRQKGTEEFV KILRYENEVL QLEEDERFEG RVVWNGSRGT KDLQDLSIFI TNVTYNHSGD YECHVYRLLF FENYEHNTSV VKKIHIEVVD KGESGAACPF TV
Isotype:	IgG
Cross-Reactivity:	Human, Mouse, Rat
Characteristics:	Polyclonal Antibodies

Target Details

Target:	SCN1B
---------	-------

Target Details

Alternative Name: [SCN1B \(SCN1B Products\)](#)

Background: Voltage-gated sodium channels are heteromeric proteins that function in the generation and propagation of action potentials in muscle and neuronal cells. They are composed of one alpha and two beta subunits, where the alpha subunit provides channel activity and the beta-1 subunit modulates the kinetics of channel inactivation. This gene encodes a sodium channel beta-1 subunit. Mutations in this gene result in generalized epilepsy with febrile seizures plus, Brugada syndrome 5, and defects in cardiac conduction. Multiple transcript variants encoding different isoforms have been found for this gene.,SCN1B,ATFB13,BRGDA5,EIEE52,GEFSP1,Cancer,Signal Transduction,Endocrine & Metabolism,Neuroscience,SCN1B

Molecular Weight: 24 kDa/30 kDa

Gene ID: 6324

UniProt: [Q07699](#)

Application Details

Application Notes: WB,1:500 - 1:2000,IHC,1:100 - 1:200

Comment: HIGH QUALITY

Restrictions: For Research Use only

Handling

Format: Liquid

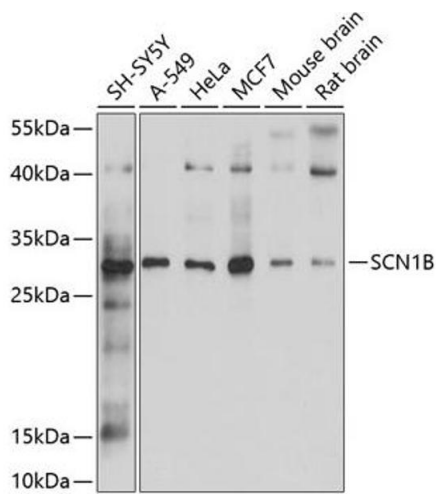
Buffer: PBS with 0.02 % sodium azide,50 % glycerol, pH 7.3.

Preservative: Sodium azide

Precaution of Use: This product contains Sodium azide: a POISONOUS AND HAZARDOUS SUBSTANCE which should be handled by trained staff only.

Storage: -20 °C

Storage Comment: Store at -20°C. Avoid freeze / thaw cycles.



Western Blotting

Image 1. Western blot analysis of extracts of various cell lines, using SCN1B antibody (ABIN6132634, ABIN6147433, ABIN6147434 and ABIN6214194) at 1:1000 dilution. Secondary antibody: HRP Goat Anti-Rabbit IgG (H+L) (ABIN1684268 and ABIN3020597) at 1:10000 dilution. Lysates/proteins: 25 µg per lane. Blocking buffer: 3 % nonfat dry milk in TBST. Detection: ECL Basic Kit (RM00020). Exposure time: 60s.