



[Go to Product page](#)

Datasheet for ABIN6147453  
**anti-SCNN1G antibody (AA 85-355)**

2 Images

Overview

Quantity:	100 µL
Target:	SCNN1G
Binding Specificity:	AA 85-355
Reactivity:	Human
Host:	Rabbit
Clonality:	Polyclonal
Conjugate:	This SCNN1G antibody is un-conjugated
Application:	Western Blotting (WB), Immunohistochemistry (IHC)

Product Details

Immunogen:	Recombinant fusion protein containing a sequence corresponding to amino acids 85-355 of human SCNN1G (NP_001030.2).
Sequence:	IKVHFRKLD F PAVTICNINP YKYSTVRHLL ADLEQETREA LKSLYGFPE RKRREAESWN SVSEGKQPRF SHRIPLLIFD QDEK GKARD F FTGRKRKVG G SIIHKASNMV HIESKQVVG F QLCSNDTSDC ATYTFSSGIN AIQEWYKLHY MNIM AQVPLE K KINMSYSAE ELLVTCFFDG VSCDARNFTL FHHPMHGNCY TFNNRENETI LSTSMGGSEY GLQVILYINE EEYNPFLVSS TGAKVIIHRQ DEYPFVEDVG TEIETAMVTS I
Isotype:	IgG
Cross-Reactivity:	Human, Mouse
Characteristics:	Polyclonal Antibodies

## Target Details

---

Target:	SCNN1G
Alternative Name:	SCNN1G ( <a href="#">SCNN1G Products</a> )
Background:	Nonvoltage-gated, amiloride-sensitive, sodium channels control fluid and electrolyte transport across epithelia in many organs. These channels are heteromeric complexes consisting of 3 subunits: alpha, beta, and gamma. This gene encodes the gamma subunit, and mutations in this gene have been associated with Liddle syndrome.,SCNN1G,BESC3,ENaCg,ENaCgamma,PHA1,SCNEG,Cancer,Signal Transduction,Endocrine & Metabolism,Insulin Receptor Signaling Pathway,Neuroscience,SCNN1G
Molecular Weight:	74 kDa
Gene ID:	6340
UniProt:	<a href="#">P51170</a>

## Application Details

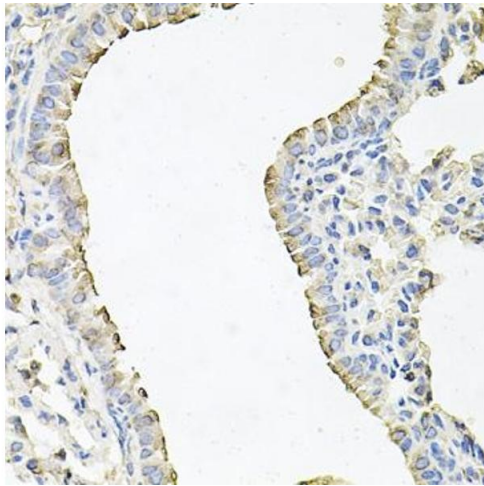
---

Application Notes:	WB,1:500 - 1:1000,IHC,1:50 - 1:100
Restrictions:	For Research Use only

## Handling

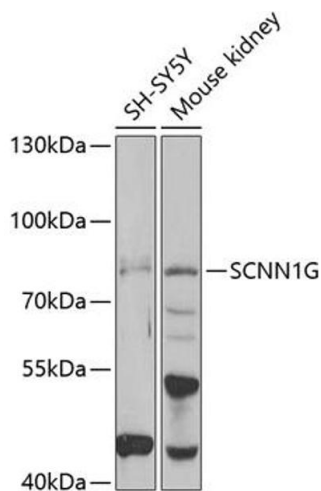
---

Format:	Liquid
Buffer:	PBS with 0.02 % sodium azide,50 % glycerol, pH 7.3.
Preservative:	Sodium azide
Precaution of Use:	This product contains Sodium azide: a POISONOUS AND HAZARDOUS SUBSTANCE which should be handled by trained staff only.
Storage:	-20 °C
Storage Comment:	Store at -20°C. Avoid freeze / thaw cycles.



### Immunohistochemistry

**Image 1.** Immunohistochemistry of paraffin-embedded mouse lung using SCNN1G antibody (ABIN6129468, ABIN6147453, ABIN6147454 and ABIN6221724) at dilution of 1:100 (40x lens). Perform microwave antigen retrieval with 10 mM PBS buffer pH 7.2 before commencing with IHC staining protocol.



### Western Blotting

**Image 2.** Western blot analysis of extracts of various cell lines, using SCNN1G antibody (ABIN6129468, ABIN6147453, ABIN6147454 and ABIN6221724) at 1:1000 dilution. Secondary antibody: HRP Goat Anti-Rabbit IgG (H+L) (ABIN1684268 and ABIN3020597) at 1:10000 dilution. Lysates/proteins: 25 µg per lane. Blocking buffer: 3 % nonfat dry milk in TBST. Detection: ECL Enhanced Kit (RM00021). Exposure time: 60s.