

Datasheet for ABIN6147476

## anti-serine Dehydratase antibody (AA 90-170)



[Go to Product page](#)

### 1 Image

#### Overview

Quantity:	100 µL
Target:	serine Dehydratase (SDS)
Binding Specificity:	AA 90-170
Reactivity:	Human
Host:	Rabbit
Clonality:	Polyclonal
Conjugate:	This serine Dehydratase antibody is un-conjugated
Application:	Western Blotting (WB)

#### Product Details

Immunogen:	Recombinant fusion protein containing a sequence corresponding to amino acids 90-170 of human SDS (NP_006834.2).
Sequence:	TTPALTIERL KNEGATVKVW GELLDEAFEL AKALAKNNPG WYIIPFDDP LIWEGHASIV KELKETLWEK PGAIALSVGG G
Isotype:	IgG
Cross-Reactivity:	Mouse, Rat
Characteristics:	Polyclonal Antibodies

#### Target Details

Target:	serine Dehydratase (SDS)
---------	--------------------------

## Target Details

---

Alternative Name:	SDS ( <a href="#">SDS Products</a> )
Background:	This gene encodes one of three enzymes that are involved in metabolizing serine and glycine. L-serine dehydratase converts L-serine to pyruvate and ammonia and requires pyridoxal phosphate as a cofactor. The encoded protein can also metabolize threonine to NH <sub>4</sub> <sup>+</sup> and 2-ketobutyrate. The encoded protein is found predominantly in the liver.,SDS,SDH,Cancer,Signal Transduction,Endocrine & Metabolism,Amino acid metabolism,SDS
Molecular Weight:	34 kDa
Gene ID:	10993
UniProt:	<a href="#">P20132</a>
Pathways:	<a href="#">Ribonucleoprotein Complex Subunit Organization</a> , <a href="#">Ribosome Assembly</a>

## Application Details

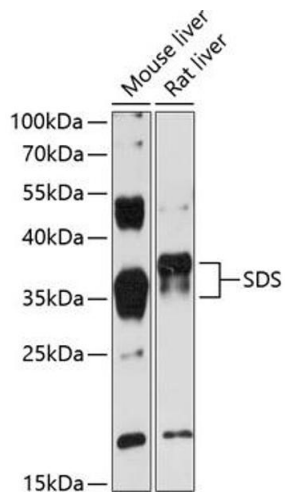
---

Application Notes:	WB,1:500 - 1:2000
Restrictions:	For Research Use only

## Handling

---

Format:	Liquid
Buffer:	PBS with 0.02 % sodium azide,50 % glycerol, pH 7.3.
Preservative:	Sodium azide
Precaution of Use:	This product contains Sodium azide: a POISONOUS AND HAZARDOUS SUBSTANCE which should be handled by trained staff only.
Storage:	-20 °C
Storage Comment:	Store at -20°C. Avoid freeze / thaw cycles.



### Western Blotting

**Image 1.** Western blot analysis of extracts of various cell lines, using SDS antibody (ABIN6132920, ABIN6147476, ABIN6147477 and ABIN6216699) at 1:3000 dilution. Secondary antibody: HRP Goat Anti-Rabbit IgG (H+L) (ABIN1684268 and ABIN3020597) at 1:10000 dilution. Lysates/proteins: 25 µg per lane. Blocking buffer: 3 % nonfat dry milk in TBST. Detection: ECL Enhanced Kit (RM00021). Exposure time: 30s.