



[Go to Product page](#)

Datasheet for ABIN6147493  
**anti-SEC61A1 antibody (AA 310-420)**

4 Images

### Overview

Quantity:	100 µL
Target:	SEC61A1
Binding Specificity:	AA 310-420
Reactivity:	Human
Host:	Rabbit
Clonality:	Polyclonal
Conjugate:	This SEC61A1 antibody is un-conjugated
Application:	Western Blotting (WB)

### Product Details

Immunogen:	Recombinant fusion protein containing a sequence corresponding to amino acids 310-420 of human SEC61A1 (NP_037468.1).
Sequence:	ARFSGNLLVS LLGTWSDTSS GGPARAYPVG GLCYLSPPE SFGSVLEDPV HAVVYIVFML GSCAFFSKTW IEVSGSSAKD VAKQLKEQQM VMRGRHRETSM VHELNRYIPT A
Isotype:	IgG
Cross-Reactivity:	Human
Characteristics:	Polyclonal Antibodies

### Target Details

Target:	SEC61A1
---------	---------

## Target Details

---

Alternative Name:	SEC61A1 ( <a href="#">SEC61A1 Products</a> )
Background:	The protein encoded by this gene belongs to the SECY/SEC61- alpha family. It appears to play a crucial role in the insertion of secretory and membrane polypeptides into the endoplasmic reticulum. This protein found to be tightly associated with membrane-bound ribosomes, either directly or through adaptor proteins. This gene encodes an alpha subunit of the heteromeric SEC61 complex, which also contains beta and gamma subunits.,SEC61A1,HNFJ4,HSEC61,SEC61,SEC61A,Signal Transduction,SEC61A1
Molecular Weight:	38 kDa/52 kDa
Gene ID:	29927
UniProt:	<a href="#">P61619</a>

## Application Details

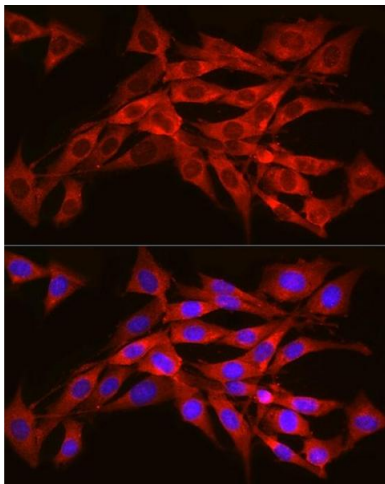
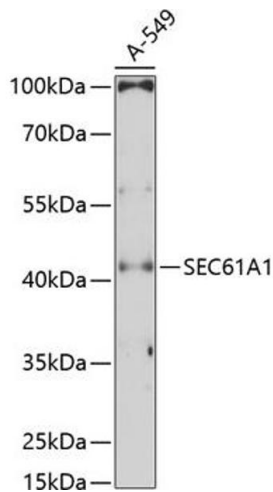
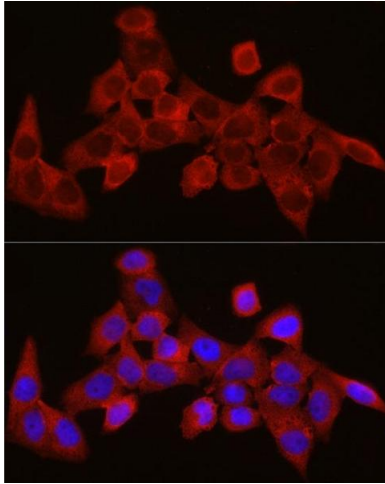
---

Application Notes:	WB,1:500 - 1:2000
Restrictions:	For Research Use only

## Handling

---

Format:	Liquid
Buffer:	PBS with 0.02 % sodium azide,50 % glycerol, pH 7.3.
Preservative:	Sodium azide
Precaution of Use:	This product contains Sodium azide: a POISONOUS AND HAZARDOUS SUBSTANCE which should be handled by trained staff only.
Storage:	-20 °C
Storage Comment:	Store at -20°C. Avoid freeze / thaw cycles.



### Immunofluorescence

**Image 1.** Immunofluorescence analysis of HeLa cells using SEC61 Rabbit pAb (1614) at dilution of 1:350 (40x lens). Blue: DAPI for nuclear staining.

### Western Blotting

**Image 2.** Western blot analysis of extracts of A-549 cells, using SEC61 Antibody (1614) at 1:3000 dilution. Secondary antibody: HRP Goat Anti-Rabbit IgG (H+L) (ABIN1684268 and ABIN3020597) at 1:10000 dilution. Lysates/proteins: 25 µg per lane. Blocking buffer: 3% nonfat dry milk in TBST. Detection: ECL Enhanced Kit (RM00021). Exposure time: 90s.

### Immunofluorescence

**Image 3.** Immunofluorescence analysis of NIH/3T3 cells using SEC61 Rabbit pAb (1614) at dilution of 1:350 (40x lens). Blue: DAPI for nuclear staining.

Please check the [product details page](#) for more images. Overall 4 images are available for ABIN6147493.