

Datasheet for ABIN6147542  
**anti-SEPHS1 antibody (AA 1-392)**



[Go to Product page](#)

4 Images

## Overview

Quantity:	100 µL
Target:	SEPHS1
Binding Specificity:	AA 1-392
Reactivity:	Human
Host:	Rabbit
Clonality:	Polyclonal
Conjugate:	This SEPHS1 antibody is un-conjugated
Application:	Western Blotting (WB), Immunohistochemistry (IHC), Immunofluorescence (IF)

## Product Details

Immunogen:	Recombinant fusion protein containing a sequence corresponding to amino acids 1-392 of human SEPHS1 (NP_036379.2).
Sequence:	MSTRESFNPE SYELDKSFRL TRFTELKGTG CKVPQDVLQK LLESLQENHF QEDEQFLGAV MPRLGIGMDT CVIPLRHGGL SLVQTTDYIY PIVDDPYMMG RIACANVLSL LYAMGVTECD NMLMLLGVS N KMTDRERDKV MPLIIQGFKD AAEAEAGTSVT GGQTVLNPWI VLGGVATTVC QPNEFIMPDN AVPGDVLVLT KPLGTQVAVA VHQWLDIPEK WNKIKLVVTQ EDVELAYQEA MMNMARLNRT AAGLMHTFNA HAATDITGFG ILGHAQNLAK QQRNEVSFVI HNLPLVLAKMA AVSKACGNMF GLMHGTCPET SGLLICLPR EQAARFCAEI KSPKYGEGHQ AWIIGIVEKG NRTARIIDKP RIIEVAPQVA TQNVNPTPGA TS
Isotype:	IgG
Cross-Reactivity:	Human, Rat

## Product Details

---

Characteristics: Polyclonal Antibodies

## Target Details

---

Target: SEPHS1

Alternative Name: SEPHS1 ([SEPHS1 Products](#))

Background: This gene encodes an enzyme that synthesizes selenophosphate from selenide and ATP. Selenophosphate is the selenium donor used to synthesize selenocysteine, which is co-translationally incorporated into selenoproteins at in-frame UGA codons.,SEPHS1,SELD,SPS,SPS1,selenide,Cell Biology & Developmental Biology,SEPHS1

Molecular Weight: 35 kDa/42 kDa

Gene ID: 22929

UniProt: [P49903](#)

## Application Details

---

Application Notes: WB,1:500 - 1:2000,IHC,1:50 - 1:200,IF,1:10 - 1:100

Comment: HIGH QUALITY

Restrictions: For Research Use only

## Handling

---

Format: Liquid

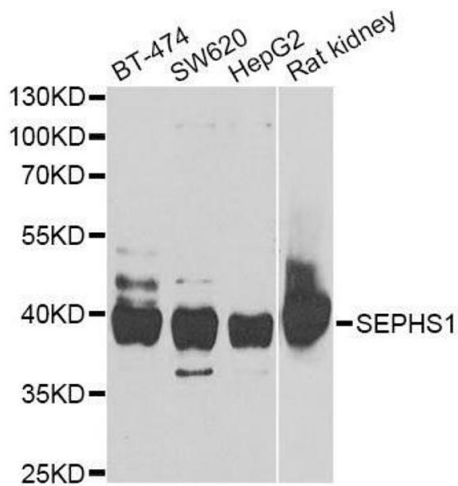
Buffer: PBS with 0.02 % sodium azide,50 % glycerol, pH 7.3.

Preservative: Sodium azide

Precaution of Use: This product contains Sodium azide: a POISONOUS AND HAZARDOUS SUBSTANCE which should be handled by trained staff only.

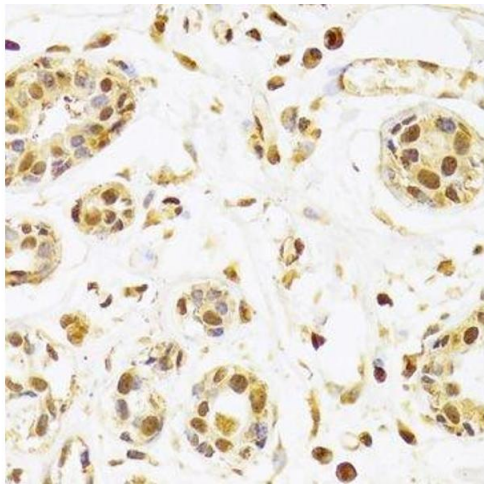
Storage: -20 °C

Storage Comment: Store at -20°C. Avoid freeze / thaw cycles.



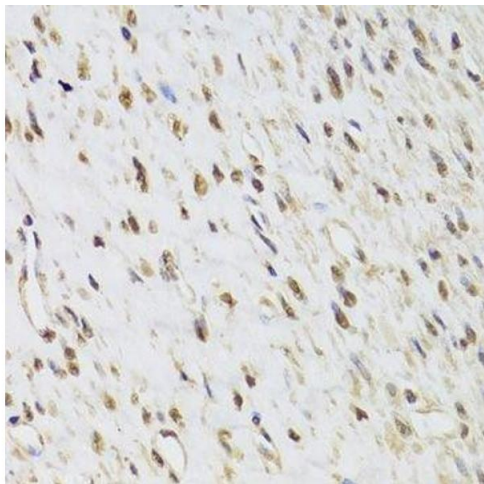
### Western Blotting

**Image 1.** Western blot analysis of extracts of various cell lines, using SEPHS1 antibody.



### Immunohistochemistry (Paraffin-embedded Sections)

**Image 2.** Immunohistochemistry of paraffin-embedded human breast using SEPHS1 Antibody.



### Immunohistochemistry (Paraffin-embedded Sections)

**Image 3.** Immunohistochemistry of paraffin-embedded human leiomyoma of uterus using SEPHS1 Antibody.

Please check the [product details page](#) for more images. Overall 4 images are available for ABIN6147542.