

Datasheet for ABIN6147568
anti-SERPINA12 antibody (AA 20-320)



[Go to Product page](#)

1 Image

Overview

Quantity:	100 µL
Target:	SERPINA12
Binding Specificity:	AA 20-320
Reactivity:	Human
Host:	Rabbit
Clonality:	Polyclonal
Conjugate:	This SERPINA12 antibody is un-conjugated
Application:	Western Blotting (WB)

Product Details

Immunogen:	Recombinant fusion protein containing a sequence corresponding to amino acids 20-320 of human SERPINA12 (NP_776249.1).
Sequence:	LLKPSFSPRN YKALSEVQGW KQRMAAKELA RQNMDLGFKL LKKLAFYNPG RNIFLSPLSI STAFSMLCLG AQDSTLDEIK QGFNFRKMPE KDLHEGFHYI IHELTQKTQD LKLSIGNTLF IDQRLQPQRK FLEDAKNFYS AETILTQNFQN LEMAQKQIND FISQKTHGKI NNLIENIDPG TVMLLANYIF FRARWKHEFD PNVTKKEEDFF LEKNSSVKVP MMFRSGIYQV GYDDKLSCTI LEIPYQKNIT AIFILPDEGK LKHLEKGLQV DTFSRWKTLL SRRVVDVSVPL RHMTGTFDL K
Isotype:	IgG
Cross-Reactivity:	Human, Mouse
Characteristics:	Polyclonal Antibodies

Target Details

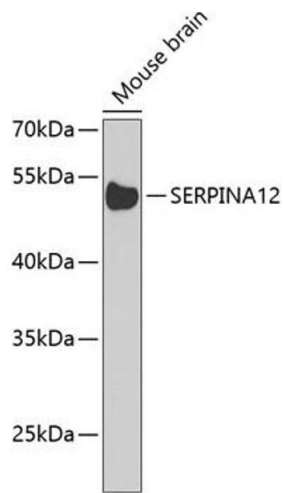
Target:	SERPINA12
Alternative Name:	SERPINA12 (SERPINA12 Products)
Background:	Adipokine that modulates insulin action by specifically inhibiting its target protease KLK7 in white adipose tissues.,SERPINA12,OL-64,Cancer,Signal Transduction,Cell Biology & Developmental Biology,Growth factor,Ubiquitin,Endocrine & Metabolism,Endocrine and metabolic diseases,Diabetes,Neuroscience,Cardiovascular,Heart,Cardiovascular diseases,Heart disease,SERPINA12
Molecular Weight:	47 kDa
Gene ID:	145264
UniProt:	Q8IW75

Application Details

Application Notes:	WB,1:500 - 1:2000
Comment:	HIGH QUALITY
Restrictions:	For Research Use only

Handling

Format:	Liquid
Buffer:	PBS with 0.02 % sodium azide,50 % glycerol, pH 7.3.
Preservative:	Sodium azide
Precaution of Use:	This product contains Sodium azide: a POISONOUS AND HAZARDOUS SUBSTANCE which should be handled by trained staff only.
Storage:	-20 °C
Storage Comment:	Store at -20°C. Avoid freeze / thaw cycles.



Western Blotting

Image 1. Western blot analysis of extracts of mouse brain, using SERPIN Antibody at 1:1000 dilution. Secondary antibody: HRP Goat Anti-Rabbit IgG (H+L) (ABIN1684268 and ABIN3020597) at 1:10000 dilution. Lysates/proteins: 25 µg per lane. Blocking buffer: 3% nonfat dry milk in TBST. Detection: ECL Basic Kit (RM00020). Exposure time: 90s.