

Datasheet for ABIN6147609

anti-alpha 2 Antiplasmin antibody (AA 302-491)[Go to Product page](#)**2** Images

Overview

| | |
|----------------------|--|
| Quantity: | 100 µL |
| Target: | alpha 2 Antiplasmin (SERPINF2) |
| Binding Specificity: | AA 302-491 |
| Reactivity: | Human |
| Host: | Rabbit |
| Clonality: | Polyclonal |
| Conjugate: | This alpha 2 Antiplasmin antibody is un-conjugated |
| Application: | Western Blotting (WB), Immunohistochemistry (IHC), Immunofluorescence (IF) |

Product Details

| | |
|-------------------|---|
| Immunogen: | Recombinant fusion protein containing a sequence corresponding to amino acids 302-491 of human SERPINF2 (NP_001159392.1). |
| Sequence: | VPTHFERNVS QVLANLSWDT LHPPLVWERP TKVRLPKLYL KHQMDLVATL SQLGLQELFQ APDLRGISEQ SLVVSQVQHQ STLELSEVGV EAAAATSIAM SRMSLSSFSV NRPFLFFIFE DTTGLPLFVG SVRNPNPSAP RELKEQQDSP GNKDFLQSLK GFPRGDKLFG PDLKLVPPME EDYPQFGSPK |
| Isotype: | IgG |
| Cross-Reactivity: | Mouse, Rat |
| Characteristics: | Polyclonal Antibodies |

Target Details

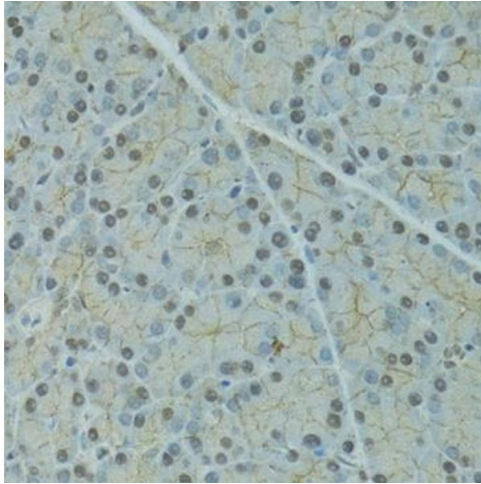
| | |
|-------------------|--|
| Target: | alpha 2 Antiplasmin (SERPINF2) |
| Alternative Name: | SERPINF2 (SERPINF2 Products) |
| Background: | <p>This gene encodes a member of the serpin family of serine protease inhibitors. The protein is a major inhibitor of plasmin, which degrades fibrin and various other proteins. Consequently, the proper function of this gene has a major role in regulating the blood clotting pathway.</p> <p>Mutations in this gene result in alpha-2-plasmin inhibitor deficiency, which is characterized by severe hemorrhagic diathesis. Multiple transcript variants encoding different isoforms have been found for this gene.,SERPINF2,A2AP,AAP,ALPHA-2-PI,API,PLI,Cell Biology & Developmental Biology,Ubiquitin,Cardiovascular,Blood,Coagulation,SERPINF2</p> |
| Molecular Weight: | 47 kDa/54 kDa |
| Gene ID: | 5345 |
| UniProt: | P08697 |
| Pathways: | Regulation of Systemic Arterial Blood Pressure by Hormones |

Application Details

| | |
|--------------------|--|
| Application Notes: | WB,1:500 - 1:2000,IHC,1:50 - 1:100,IF,1:50 - 1:100 |
| Comment: | HIGH QUALITY |
| Restrictions: | For Research Use only |

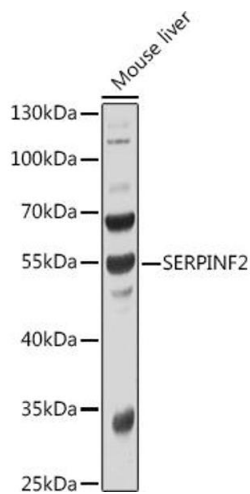
Handling

| | |
|--------------------|--|
| Format: | Liquid |
| Buffer: | PBS with 0.02 % sodium azide,50 % glycerol, pH 7.3. |
| Preservative: | Sodium azide |
| Precaution of Use: | This product contains Sodium azide: a POISONOUS AND HAZARDOUS SUBSTANCE which should be handled by trained staff only. |
| Storage: | -20 °C |
| Storage Comment: | Store at -20°C. Avoid freeze / thaw cycles. |



Immunohistochemistry

Image 1. Immunohistochemistry of paraffin-embedded rat pancreas using SERPINF2 antibody at dilution of 1:100 (40x lens). Perform microwave antigen retrieval with 10 mM PBS buffer pH 7.2 before commencing with IHC staining protocol.



Western Blotting

Image 2. Western blot analysis of extracts of Mouse liver, using SERPINF2 antibody at 1:1000 dilution. Secondary antibody: HRP Goat Anti-Rabbit IgG (H+L) (ABIN1684268 and ABIN3020597) at 1:10000 dilution. Lysates/proteins: 25 µg per lane. Blocking buffer: 3% nonfat dry milk in TBST. Detection: ECL Basic Kit (RM00020). Exposure time: 30s.