

Datasheet for ABIN6147629
anti-SET/TAF-I antibody (AA 146-277)[Go to Product page](#)

4 Images

Overview

Quantity:	100 µL
Target:	SET/TAF-I (SET)
Binding Specificity:	AA 146-277
Reactivity:	Human
Host:	Rabbit
Clonality:	Polyclonal
Conjugate:	This SET/TAF-I antibody is un-conjugated
Application:	Western Blotting (WB), Immunohistochemistry (IHC), Immunofluorescence (IF)

Product Details

Immunogen:	Recombinant fusion protein containing a sequence corresponding to amino acids 146-277 of human SET/TAF1 (NP_003002.2).
Sequence:	NESGDPSSKS TEIKWKSGKD LTKRSSQTQN KASRKQHEE PESFTTWFTD HSDAGADELG EVIKDDIWPN PLQYYLVPDM DDEEGEGEED DDDDEEEEGE EDIDEEGED EGEEDDDDE GEEGEEDEGE DD
Isotype:	IgG
Cross-Reactivity:	Human, Mouse, Rat
Characteristics:	Polyclonal Antibodies

Target Details

Target:	SET/TAF-I (SET)
---------	-----------------

Target Details

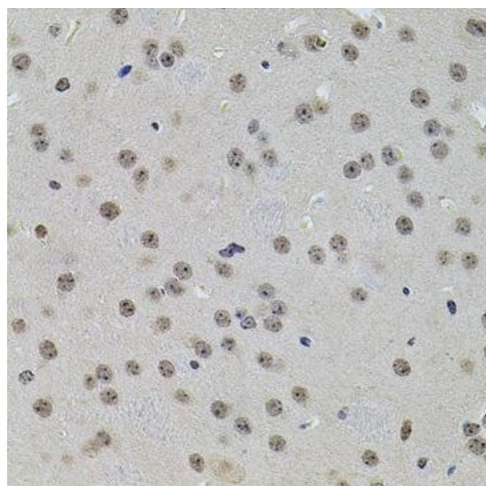
Alternative Name:	SET (SET Products)
Background:	<p>The protein encoded by this gene inhibits acetylation of nucleosomes, especially histone H4, by histone acetylases (HAT). This inhibition is most likely accomplished by masking histone lysines from being acetylated, and the consequence is to silence HAT-dependent transcription. The encoded protein is part of a complex localized to the endoplasmic reticulum but is found in the nucleus and inhibits apoptosis following attack by cytotoxic T lymphocytes. This protein can also enhance DNA replication of the adenovirus genome. Several transcript variants encoding different isoforms have been found for this</p> <p>gene.,SET,2PP2A,I2PP2A,IGAAD,IPP2A2,PHAPII,TAF-I,TAF-IBETA,Epigenetics & Nuclear Signaling,Chromatin Remodeling,Cancer,Signal Transduction,Cell Biology & Developmental Biology,Cell Cycle,Immunology & Inflammation,Neuroscience,Neurodegenerative Diseases,Amyloid Plaque and Neurofibrillary Tangle Formation in Alzheimer's Disease,SET</p>
Molecular Weight:	30 kDa/31 kDa/32 kDa/33 kDa
Gene ID:	6418
UniProt:	Q01105
Pathways:	Apoptosis

Application Details

Application Notes:	WB,1:500 - 1:2000,IHC,1:50 - 1:200,IF,1:50 - 1:200
Restrictions:	For Research Use only

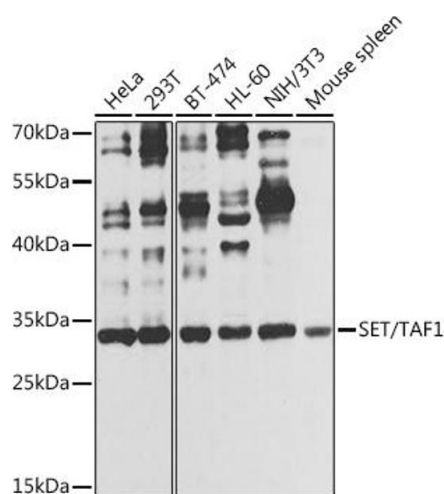
Handling

Format:	Liquid
Buffer:	PBS with 0.02 % sodium azide,50 % glycerol, pH 7.3.
Preservative:	Sodium azide
Precaution of Use:	This product contains Sodium azide: a POISONOUS AND HAZARDOUS SUBSTANCE which should be handled by trained staff only.
Storage:	-20 °C
Storage Comment:	Store at -20°C. Avoid freeze / thaw cycles.



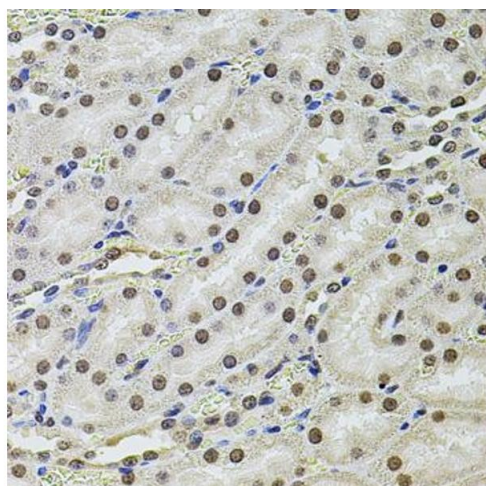
Immunohistochemistry

Image 1. Immunohistochemistry of paraffin-embedded mouse brain using SET/T antibody (ABIN6131351, ABIN6147629, ABIN6147632 and ABIN6216153) at dilution of 1:100 (40x lens). Perform microwave antigen retrieval with 10 mM PBS buffer pH 7.2 before commencing with IHC staining protocol.



Western Blotting

Image 2. Western blot analysis of extracts of various cell lines, using SET/T antibody (ABIN6131351, ABIN6147629, ABIN6147632 and ABIN6216153) at 1:1000 dilution. Secondary antibody: HRP Goat Anti-Rabbit IgG (H+L) (ABIN1684268 and ABIN3020597) at 1:10000 dilution. Lysates/proteins: 25 µg per lane. Blocking buffer: 3 % nonfat dry milk in TBST. Detection: ECL Basic Kit (RM00020). Exposure time: 30s.



Immunohistochemistry

Image 3. Immunohistochemistry of paraffin-embedded rat kidney using SET/T antibody (ABIN6131351, ABIN6147629, ABIN6147632 and ABIN6216153) at dilution of 1:100 (40x lens). Perform microwave antigen retrieval with 10 mM PBS buffer pH 7.2 before commencing with IHC staining protocol.

Please check the [product details page](#) for more images. Overall 4 images are available for ABIN6147629.