

Datasheet for ABIN6147635  
**anti-SETBP1 antibody (AA 1-242)**



[Go to Product page](#)

2 Images

Overview

Quantity:	100 µL
Target:	SETBP1
Binding Specificity:	AA 1-242
Reactivity:	Human
Host:	Rabbit
Clonality:	Polyclonal
Conjugate:	This SETBP1 antibody is un-conjugated
Application:	Western Blotting (WB), Immunofluorescence (IF)

Product Details

Immunogen:	Recombinant fusion protein containing a sequence corresponding to amino acids 1-242 of human SETBP1 (NP_001123582.1).
Sequence:	MESRETLSSS RQRGGESDFL PVSSAKPPAA PGCAGEPLLS TPGPGKGIPV GGERMEPEEE DELGSGRDVD SNSNADSEKW VAGDGLLEEQE FSIKEANFTE GSLKLIQTT KRAKKPPKNL ENYICPPEIK ITIKQSGDQK VSRAGKNSKA TKEEERSHSK KKLLTASDLA ASDLKGFPQ IKDSSKEEVW KRRGGQGIPF KKQFLSQERA MCFSCPRNPF PAKPGSLTLP FHSEPAVWAQ EV
Isotype:	IgG
Cross-Reactivity:	Human, Rat
Characteristics:	Polyclonal Antibodies

## Target Details

---

Target:	SETBP1
Alternative Name:	SETBP1 ( <a href="#">SETBP1 Products</a> )
Background:	<p>This gene encodes a protein which contains a several motifs including a ski homology region and a SET-binding region in addition to three nuclear localization signals. The encoded protein has been shown to bind the SET nuclear oncogene which is involved in DNA replication. Mutations in this gene are associated with Schinzel-Giedion midface retraction syndrome. Multiple transcript variants encoding different isoforms have been found for this gene.,SETBP1,MRD29,SEB,Epigenetics &amp; Nuclear Signaling,Cancer,SETBP1</p>
Molecular Weight:	26 kDa/175 kDa
Gene ID:	26040
UniProt:	<a href="#">Q9Y6X0</a>

## Application Details

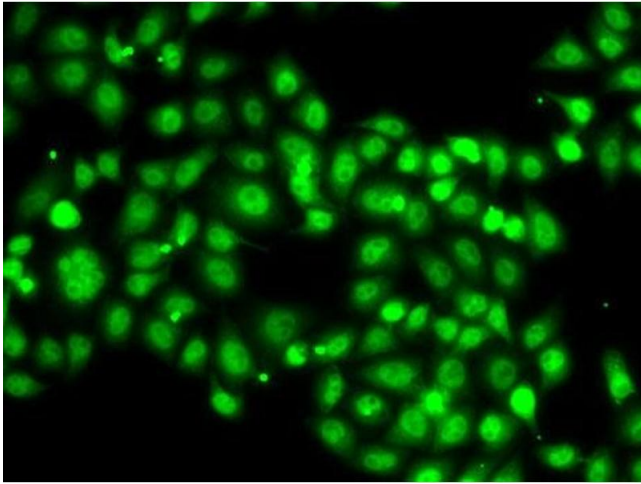
---

Application Notes:	WB,1:500 - 1:2000,IF,1:50 - 1:100
Restrictions:	For Research Use only

## Handling

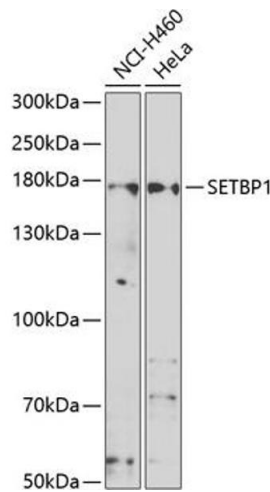
---

Format:	Liquid
Buffer:	PBS with 0.02 % sodium azide,50 % glycerol, pH 7.3.
Preservative:	Sodium azide
Precaution of Use:	This product contains Sodium azide: a POISONOUS AND HAZARDOUS SUBSTANCE which should be handled by trained staff only.
Storage:	-20 °C
Storage Comment:	Store at -20°C. Avoid freeze / thaw cycles.



### Immunofluorescence

**Image 1.** Immunofluorescence analysis of A-549 cells using SETBP1 antibody (ABIN6132919, ABIN6147635, ABIN6147636 and ABIN6223042).



### Western Blotting

**Image 2.** Western blot analysis of extracts of various cell lines, using SETBP1 antibody (ABIN6132919, ABIN6147635, ABIN6147636 and ABIN6223042) at 1:1000 dilution. Secondary antibody: HRP Goat Anti-Rabbit IgG (H+L) (ABIN1684268 and ABIN3020597) at 1:10000 dilution. Lysates/proteins: 25 µg per lane. Blocking buffer: 3 % nonfat dry milk in TBST. Detection: ECL Basic Kit (RM00020). Exposure time: 90s.