

Datasheet for ABIN6147644
anti-SETD5 antibody (AA 520-740)



[Go to Product page](#)

3 Images

Overview

Quantity:	100 µL
Target:	SETD5
Binding Specificity:	AA 520-740
Reactivity:	Human
Host:	Rabbit
Clonality:	Polyclonal
Conjugate:	This SETD5 antibody is un-conjugated
Application:	Immunohistochemistry (IHC), Western Blotting (WB), Immunofluorescence (IF)

Product Details

Immunogen:	Recombinant fusion protein containing a sequence corresponding to amino acids 520-740 of human SETD5 (NP_001073986.1).
Sequence:	HAFENLEKRK KRRDQPLEQS NSDVEITTTT SETPVGEETK TEAPESEVSN SVSNVTIPST PQSVGVNTRR SSQAGDIAAE KLVPKPPPAK PSRPRPKSRI SRYRTSSAQR LKRQKQANAQ QAELSQAAL EGGNSLVTP TEAGSLDSSG ENRPLTGSDP TVVSITGSHV NRAASKYPKT KKYLVTWELN DKAEKQECPV ECPLRITDDP TVLATTLNML P
Isotype:	IgG
Cross-Reactivity:	Human, Mouse, Rat
Characteristics:	Polyclonal Antibodies

Target Details

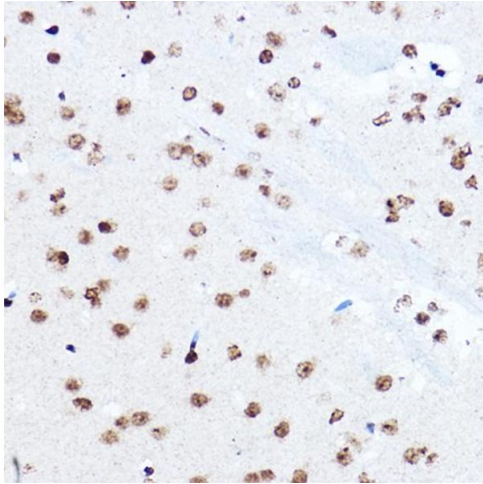
Target:	SETD5
Alternative Name:	SETD5 (SETD5 Products)
Background:	This function of this gene has yet to be determined but mutations in this gene have been associated with autosomal dominant mental retardation-23. Alternative splicing results in multiple transcript variants encoding different isoforms.,SETD5,Epigenetics & Nuclear Signaling,SETD5
Molecular Weight:	145 kDa/147 kDa/157 kDa
Gene ID:	55209
UniProt:	Q9C0A6

Application Details

Application Notes:	WB,1:500 - 1:2000,IHC,1:50 - 1:200,IF,1:50 - 1:100
Restrictions:	For Research Use only

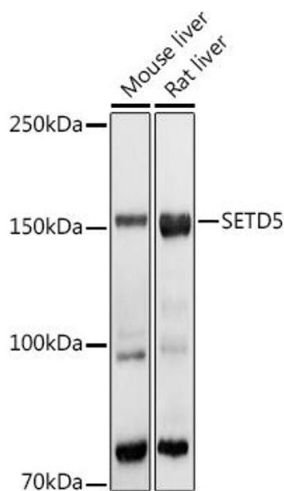
Handling

Format:	Liquid
Buffer:	PBS with 0.02 % sodium azide,50 % glycerol, pH 7.3.
Preservative:	Sodium azide
Precaution of Use:	This product contains Sodium azide: a POISONOUS AND HAZARDOUS SUBSTANCE which should be handled by trained staff only.
Storage:	-20 °C
Storage Comment:	Store at -20°C. Avoid freeze / thaw cycles.



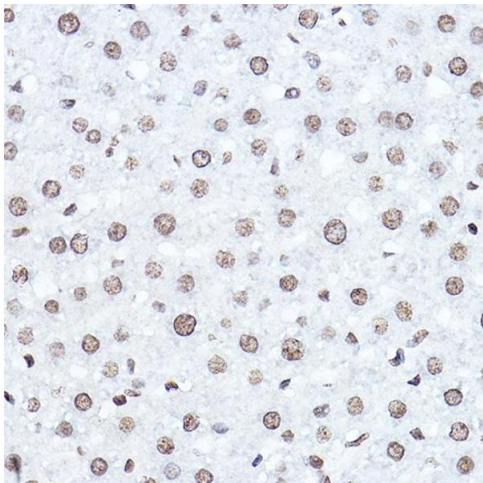
Immunohistochemistry

Image 1. Immunohistochemistry of paraffin-embedded mouse brain using SETD5 Rabbit pAb (ABIN6132960, ABIN6147644, ABIN6147646 and ABIN6223140) at dilution of 1:100 (40x lens). Perform microwave antigen retrieval with 10 mM Tris/EDTA buffer pH 9.0 before commencing with IHC staining protocol.



Western Blotting

Image 2. Western blot analysis of extracts of various cell lines, using SETD5 antibody (ABIN6132960, ABIN6147644, ABIN6147646 and ABIN6223140) at 1:1000 dilution. Secondary antibody: HRP Goat Anti-Rabbit IgG (H+L) (ABIN1684268 and ABIN3020597) at 1:10000 dilution. Lysates/proteins: 25 µg per lane. Blocking buffer: 3 % nonfat dry milk in TBST. Detection: ECL Basic Kit (RM00020). Exposure time: 3s.



Immunohistochemistry

Image 3. Immunohistochemistry of paraffin-embedded rat liver using SETD5 Rabbit pAb (ABIN6132960, ABIN6147644, ABIN6147646 and ABIN6223140) at dilution of 1:100 (40x lens). Perform microwave antigen retrieval with 10 mM Tris/EDTA buffer pH 9.0 before commencing with IHC staining protocol.