



[Go to Product page](#)

Datasheet for ABIN6147653
anti-SETD8 antibody (AA 73-352)

2 Images

Overview

Quantity:	100 µL
Target:	SETD8
Binding Specificity:	AA 73-352
Reactivity:	Human
Host:	Rabbit
Clonality:	Polyclonal
Conjugate:	This SETD8 antibody is un-conjugated
Application:	Western Blotting (WB), Immunofluorescence (IF)

Product Details

Immunogen:	Recombinant fusion protein containing a sequence corresponding to amino acids 73-352 of human KMT5A/KMT5A/SETD8 (NP_065115.3).
Sequence:	ENSVTHHEVK CQGKPLAGIY RKREEKRNAG NAVRSAMKSE EQKIKDARKG PLVPFPNQKS EAAEPPKTPP SSCDSTNAAI AKQALKKPIK GKQAPRKAQ GKTQQNRKLT DFYPVRRSSR KSKAELQSEE RKRIDELIES GKEEGMKIDL IDGKGRGVIA TKQFSRGDFV VEYHGDLIEI TDAKKREALY AQDPSTGCIYM YYFQYLSKTY CVDATRETNR LGRLINHSKC GNCQTKLHDI DGVPHLILIA SRDIAAGEEL LYDYGDRSKA SIEAHPWLKH
Isotype:	IgG
Cross-Reactivity:	Human, Mouse, Rat
Characteristics:	Polyclonal Antibodies
Purification:	Affinity purification

Target Details

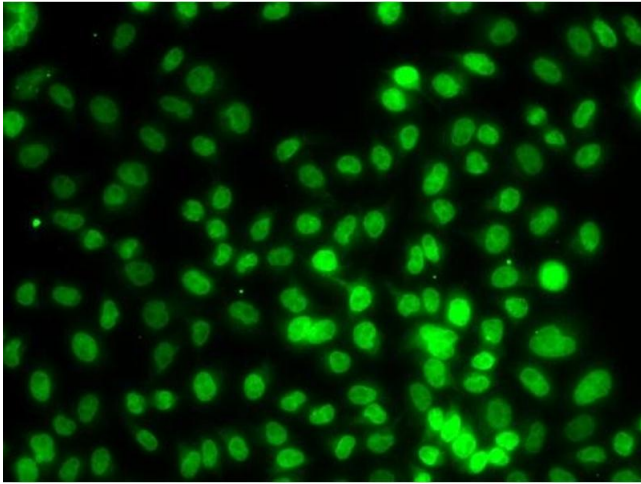
Target:	SETD8
Alternative Name:	KMT5A (SETD8 Products)
Background:	<p>The protein encoded by this gene is a protein-lysine N-methyltransferase that can monomethylate Lys-20 of histone H4 to effect transcriptional repression of some genes. The encoded protein is required for cell proliferation and plays a role in chromatin condensation. [provided by RefSeq, May 2016],KMT5A,PR-Set7,SET07,SET8,SETD8,Epigenetics & Nuclear Signaling,Chromatin Modifying Enzymes,Methylation,KMT5A</p>
Molecular Weight:	39 kDa/42 kDa
Gene ID:	387893
UniProt:	Q9NQR1

Application Details

Application Notes:	WB,1:500 - 1:2000,IF,1:50 - 1:100
Restrictions:	For Research Use only

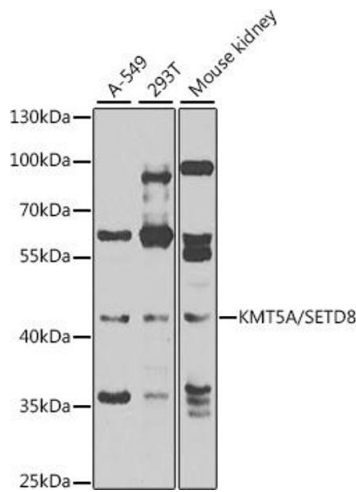
Handling

Format:	Liquid
Buffer:	PBS with 0.02 % sodium azide,50 % glycerol, pH 7.3.
Preservative:	Sodium azide
Precaution of Use:	This product contains Sodium azide: a POISONOUS AND HAZARDOUS SUBSTANCE which should be handled by trained staff only.
Storage:	-20 °C
Storage Comment:	Store at -20°C. Avoid freeze / thaw cycles.



Immunofluorescence

Image 1. Immunofluorescence analysis of MCF-7 cells using KMT5A/KMT5A/SETD8 antibody (ABIN6132563, ABIN6147653, ABIN6147654 and ABIN6223142).



Western Blotting

Image 2. Western blot analysis of extracts of various cell lines, using KMT5A/KMT5A/SETD8 antibody (ABIN6132563, ABIN6147653, ABIN6147654 and ABIN6223142) at 1:1000 dilution. Secondary antibody: HRP Goat Anti-Rabbit IgG (H+L) (ABIN1684268 and ABIN3020597) at 1:10000 dilution. Lysates/proteins: 25 µg per lane. Blocking buffer: 3 % nonfat dry milk in TBST. Detection: ECL Enhanced Kit (RM00021). Exposure time: 60s.