

Datasheet for ABIN6147695
anti-SFXN3 antibody (AA 1-80)



[Go to Product page](#)

1 Image

Overview

Quantity:	100 µL
Target:	SFXN3
Binding Specificity:	AA 1-80
Reactivity:	Human
Host:	Rabbit
Clonality:	Polyclonal
Conjugate:	This SFXN3 antibody is un-conjugated
Application:	Western Blotting (WB)

Product Details

Immunogen:	Recombinant fusion protein containing a sequence corresponding to amino acids 1-80 of human SFXN3 (NP_112233.2).
Sequence:	MESKMGELPL DINIQEPRWD QSTFLGRARH FFTVTDPRNL LLGAQLEAS RNIVQNYRAG VVTPGITEDQ LWRKYVYDS
Isotype:	IgG
Cross-Reactivity:	Human, Mouse, Rat
Characteristics:	Polyclonal Antibodies

Target Details

Target:	SFXN3
---------	-------

Target Details

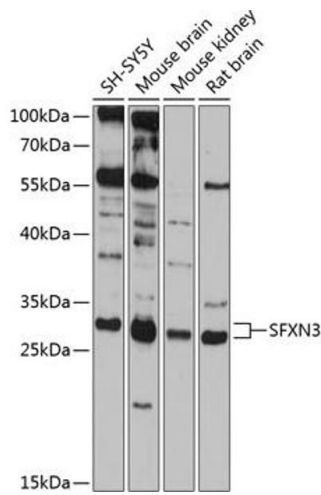
Alternative Name:	SFXN3 (SFXN3 Products)
Background:	Mitochondrial serine transporter that mediates transport of serine into mitochondria, an important step of the one-carbon metabolism pathway. Mitochondrial serine is converted to glycine and formate, which then exits to the cytosol where it is used to generate the charged folates that serve as one-carbon donors.,SFXN3,BA108L7.2,SFX3,Signal Transduction,Endocrine & Metabolism,Mitochondrial metabolism,Mitochondrial markers,SFXN3
Molecular Weight:	35 kDa
Gene ID:	81855
UniProt:	Q9BWM7
Pathways:	Transition Metal Ion Homeostasis

Application Details

Application Notes:	WB,1:500 - 1:2000
Restrictions:	For Research Use only

Handling

Format:	Liquid
Buffer:	PBS with 0.02 % sodium azide,50 % glycerol, pH 7.3.
Preservative:	Sodium azide
Precaution of Use:	This product contains Sodium azide: a POISONOUS AND HAZARDOUS SUBSTANCE which should be handled by trained staff only.
Storage:	-20 °C
Storage Comment:	Store at -20°C. Avoid freeze / thaw cycles.



Western Blotting

Image 1. Western blot analysis of extracts of various cell lines, using SFXN3 antibody at 1:1000 dilution. Secondary antibody: HRP Goat Anti-Rabbit IgG (H+L) (ABIN1684268 and ABIN3020597) at 1:10000 dilution. Lysates/proteins: 25 µg per lane. Blocking buffer: 3% nonfat dry milk in TBST. Detection: ECL Basic Kit (RM00020). Exposure time: 10s.