

Datasheet for ABIN6147709
anti-SGK3 antibody (AA 1-150)



[Go to Product page](#)

1 Image

Overview

Quantity:	100 µL
Target:	SGK3
Binding Specificity:	AA 1-150
Reactivity:	Human
Host:	Rabbit
Clonality:	Polyclonal
Conjugate:	This SGK3 antibody is un-conjugated
Application:	Western Blotting (WB)

Product Details

Immunogen:	Recombinant fusion protein containing a sequence corresponding to amino acids 1-150 of human SGK3 (NP_037389.4).
Sequence:	MQRDHTMDYK ESCPSVSIPS SDEHREKKKR FTVYKVLVSV GRSEWVFVRR YAEFDKLYNT LKKQFPAMAL KIPAKRIFGD NFDPDFIKQR RAGLNEFIQN LVRYPELYNH PDVRAFLQMD SPKHQSDPSE DEDERSSQKL HSTSQNINLG
Isotype:	IgG
Cross-Reactivity:	Human, Mouse
Characteristics:	Polyclonal Antibodies

Target Details

Target:	SGK3
---------	------

Target Details

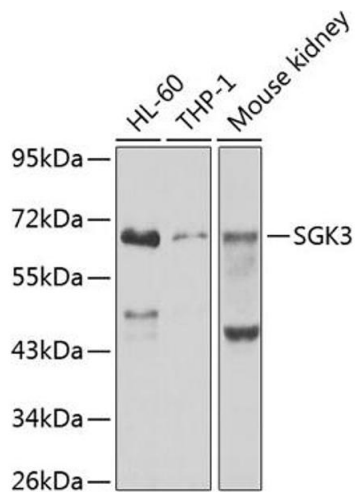
Alternative Name:	SGK3 (SGK3 Products)
Background:	<p>This gene is a member of the Ser/Thr protein kinase family and encodes a phosphoprotein with a PX (phox homology) domain. The protein phosphorylates several target proteins and has a role in neutral amino acid transport and activation of potassium and chloride channels.</p> <p>Alternate transcriptional splice variants, encoding different isoforms, have been characterized.,SGK3,CISK,SGK2,SGKL,Signal Transduction,Kinase,Serine/threonine kinases,Endocrine & Metabolism,Insulin Receptor Signaling Pathway,SGK3</p>
Molecular Weight:	53 kDa/57 kDa
Gene ID:	23678
UniProt:	Q96BR1

Application Details

Application Notes:	WB,1:500 - 1:2000
Comment:	HIGH QUALITY
Restrictions:	For Research Use only

Handling

Format:	Liquid
Buffer:	PBS with 0.02 % sodium azide,50 % glycerol, pH 7.3.
Preservative:	Sodium azide
Precaution of Use:	This product contains Sodium azide: a POISONOUS AND HAZARDOUS SUBSTANCE which should be handled by trained staff only.
Storage:	-20 °C
Storage Comment:	Store at -20°C. Avoid freeze / thaw cycles.



Western Blotting

Image 1. Western blot analysis of extracts of various cell lines, using SGK3 antibody (ABIN6132066, ABIN6147709, ABIN6147710 and ABIN6223495) at 1:1000 dilution. Secondary antibody: HRP Goat Anti-Rabbit IgG (H+L) (ABIN1684268 and ABIN3020597) at 1:10000 dilution. Lysates/proteins: 25 µg per lane. Blocking buffer: 3 % nonfat dry milk in TBST. Detection: ECL Enhanced Kit (RM00021). Exposure time: 10s.