

Datasheet for ABIN6147714
anti-SGTA antibody (AA 1-120)



[Go to Product page](#)

3 Images

Overview

Quantity:	100 µL
Target:	SGTA
Binding Specificity:	AA 1-120
Reactivity:	Human
Host:	Rabbit
Clonality:	Polyclonal
Conjugate:	This SGTA antibody is un-conjugated
Application:	Western Blotting (WB), Immunofluorescence (IF)

Product Details

Immunogen:	Recombinant fusion protein containing a sequence corresponding to amino acids 1-120 of human SGTA (NP_003012.1).
Sequence:	MDNKKRLAYA IIQFLHDQLR HGGLSSDAQE SLEVAIQCLE TAFGVTVEDS DLALPQTLPE IFEAAATGKE MPQDLRSPAR TPPSEEDSAE AERLKTEGNE QMKVENFEAA VHFYGKAIEL
Isotype:	IgG
Cross-Reactivity:	Human
Characteristics:	Polyclonal Antibodies

Target Details

Target:	SGTA
---------	------

Target Details

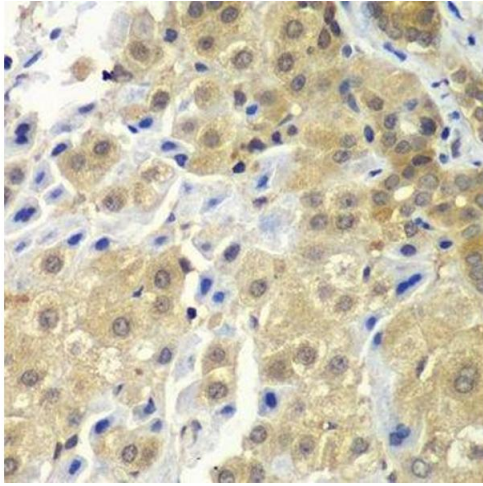
Alternative Name:	SGTA (SGTA Products)
Background:	This gene encodes a protein which is capable of interacting with the major nonstructural protein of parvovirus H-1 and 70- kDa heat shock cognate protein, however, its function is not known. Since this transcript is expressed ubiquitously in various tissues, this protein may serve a housekeeping function.,SGTA,SGT,alphaSGT,hSGT,Signal Transduction,Cell Biology & Developmental Biology,Apoptosis,Cell Cycle,SGTA
Molecular Weight:	34 kDa
Gene ID:	6449
UniProt:	O43765

Application Details

Application Notes:	WB,1:500 - 1:2000,IF,1:50 - 1:100
Comment:	HIGH QUALITY
Restrictions:	For Research Use only

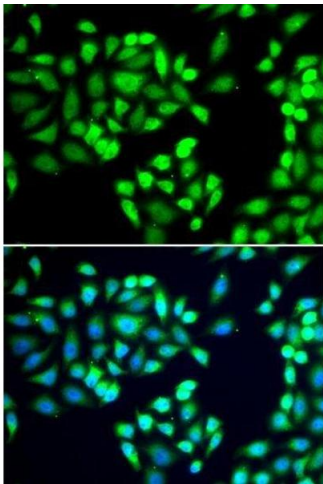
Handling

Format:	Liquid
Buffer:	PBS with 0.02 % sodium azide,50 % glycerol, pH 7.3.
Preservative:	Sodium azide
Precaution of Use:	This product contains Sodium azide: a POISONOUS AND HAZARDOUS SUBSTANCE which should be handled by trained staff only.
Storage:	-20 °C
Storage Comment:	Store at -20°C. Avoid freeze / thaw cycles.



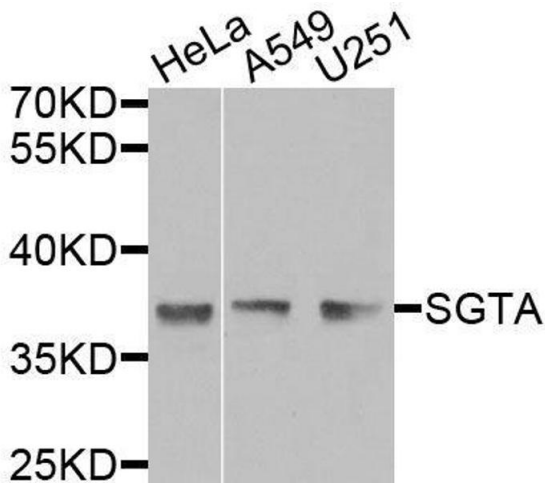
Immunohistochemistry (Paraffin-embedded Sections)

Image 1. Immunohistochemistry of paraffin-embedded human liver cancer using SGTA antibody.



Immunofluorescence

Image 2. Immunofluorescence analysis of A-549 cells using SGTA antibody.



Western Blotting

Image 3. Western blot analysis of extracts of various cell lines, using SGTA antibody.