



[Go to Product page](#)

Datasheet for ABIN6147725
anti-SH3G2 antibody (AA 1-270)

2 Images

Overview

Quantity:	100 µL
Target:	SH3G2
Binding Specificity:	AA 1-270
Reactivity:	Human
Host:	Rabbit
Clonality:	Polyclonal
Conjugate:	This SH3G2 antibody is un-conjugated
Application:	Western Blotting (WB), Immunofluorescence (IF)

Product Details

Immunogen:	Recombinant fusion protein containing a sequence corresponding to amino acids 1-270 of human SH3GL2 (NP_003017.1).
Sequence:	MSVAGLKKQF HKATQKVSEK VGGAEGTKLD DDFKEMERKV DVTSRAVMEI MTKTIEYLQP NPASRAKLSM INTMSKIRGQ EKGPGYPQAE ALLAEAMLKF GRELGDDCNF GPALGEVGEA MRELSEVKDS LDIEVKQNF I DPLQNLHDKD LREIQHHLKK LEGRRLDFDY KKKRQGKIPD EELRQALEKF DESKEIAESS MFNLLLEMDIE QVSQLSALVQ AQLEYHKQAV QILQQVTVRL EERIRQASSQ PRREYQPKPR MSLEFPTGDS
Isotype:	IgG
Cross-Reactivity:	Human, Mouse
Characteristics:	Polyclonal Antibodies

Target Details

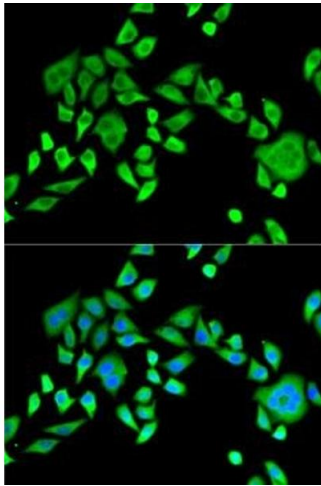
Target:	SH3G2
Alternative Name:	SH3GL2 (SH3G2 Products)
Background:	Implicated in synaptic vesicle endocytosis. May recruit other proteins to membranes with high curvature. Required for BDNF-dependent dendrite outgrowth. Cooperates with SH3GL2 to mediate BDNF-NTRK2 early endocytic trafficking and signaling from early endosomes.,SH3GL2,CNSA2,EEN-B1,SH3D2A,SH3P4,Cancer,Tumor biomarkers,Signal Transduction,SH3GL2
Molecular Weight:	39 kDa
Gene ID:	6456
UniProt:	Q99962
Pathways:	Neurotrophin Signaling Pathway , EGFR Downregulation

Application Details

Application Notes:	WB,1:500 - 1:2000,IF,1:50 - 1:200
Comment:	HIGH QUALITY
Restrictions:	For Research Use only

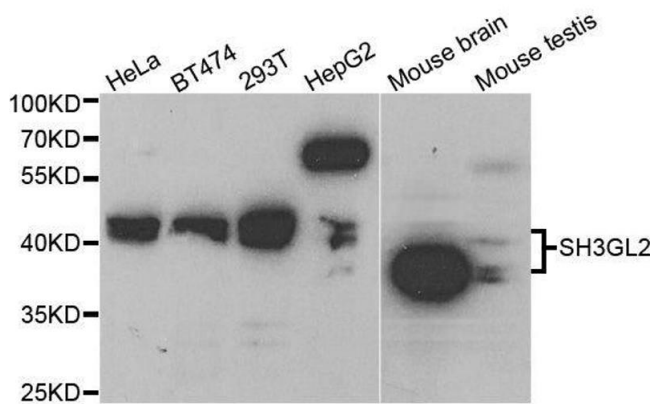
Handling

Format:	Liquid
Buffer:	PBS with 0.02 % sodium azide,50 % glycerol, pH 7.3.
Preservative:	Sodium azide
Precaution of Use:	This product contains Sodium azide: a POISONOUS AND HAZARDOUS SUBSTANCE which should be handled by trained staff only.
Storage:	-20 °C
Storage Comment:	Store at -20°C. Avoid freeze / thaw cycles.



Immunofluorescence

Image 1. Immunofluorescence analysis of HeLa cells using SH3GL2 antibody (ABIN6132118, ABIN6147725, ABIN6147726 and ABIN6221363). Blue: DAPI for nuclear staining.



Western Blotting

Image 2. Western blot analysis of extracts of various cell lines, using SH3GL2 antibody.