

Datasheet for ABIN6147736
anti-SHBG antibody (AA 30-170)[Go to Product page](#)

2 Images

Overview

Quantity:	100 µL
Target:	SHBG
Binding Specificity:	AA 30-170
Reactivity:	Human
Host:	Rabbit
Clonality:	Polyclonal
Conjugate:	This SHBG antibody is un-conjugated
Application:	Western Blotting (WB), Immunohistochemistry (IHC)

Product Details

Immunogen:	Recombinant fusion protein containing a sequence corresponding to amino acids 30-170 of human SHBG (NP_001031.2).
Sequence:	LRPVLPTQSA HDPPAVHLSN GPGQEPIAVM TFDLTKITKT SSSFEVRTWD PEGVIFYGDT NPKDDWFM LG LRDGRPEIQL HNHWAQLTVG AGPRLDDGRW HQVEVKMEGD SVLLEVDGEE VLRLRQVSGP LTSKRHPIMR I
Isotype:	IgG
Cross-Reactivity:	Human, Mouse, Rat
Characteristics:	Polyclonal Antibodies

Target Details

Target:	SHBG
---------	------

Target Details

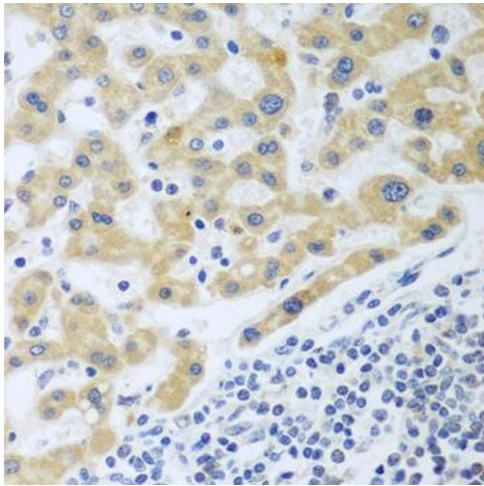
Alternative Name:	SHBG (SHBG Products)
Background:	<p>This gene encodes a steroid binding protein that was first described as a plasma protein secreted by the liver but is now thought to participate in the regulation of steroid responses. The encoded protein transports androgens and estrogens in the blood, binding each steroid molecule as a dimer formed from identical or nearly identical monomers. Polymorphisms in this gene have been associated with polycystic ovary syndrome and type 2 diabetes mellitus. Alternative splicing results in multiple transcript variants.,SHBG,ABP,SBP,TEBG,Epigenetics & Nuclear Signaling,Nuclear Receptor Signaling,Signal Transduction,Cell Biology & Developmental Biology,Growth factor,Endocrine & Metabolism,Lipid Metabolism,SHBG</p>
Molecular Weight:	31 kDa/32 kDa/41 kDa/43 kDa
Gene ID:	6462
UniProt:	P04278
Pathways:	Hormone Transport

Application Details

Application Notes:	WB,1:500 - 1:2000,IHC,1:100 - 1:200
Comment:	HIGH QUALITY
Restrictions:	For Research Use only

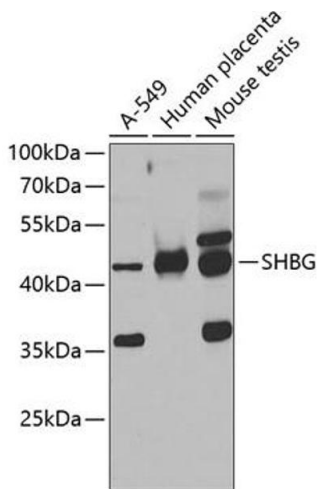
Handling

Format:	Liquid
Buffer:	PBS with 0.02 % sodium azide,50 % glycerol, pH 7.3.
Preservative:	Sodium azide
Precaution of Use:	This product contains Sodium azide: a POISONOUS AND HAZARDOUS SUBSTANCE which should be handled by trained staff only.
Storage:	-20 °C
Storage Comment:	Store at -20°C. Avoid freeze / thaw cycles.



Immunohistochemistry

Image 1. Immunohistochemistry of paraffin-embedded human liver cancer using SHBG antibody (ABIN6129327, ABIN6147736, ABIN6147737 and ABIN6223329) at dilution of 1:100 (40x lens). Perform microwave antigen retrieval with 10 mM PBS buffer pH 7.2 before commencing with IHC staining protocol.



Western Blotting

Image 2. Western blot analysis of extracts of various cell lines, using SHBG antibody (ABIN6129327, ABIN6147736, ABIN6147737 and ABIN6223329) at 1:1000 dilution. Secondary antibody: HRP Goat Anti-Rabbit IgG (H+L) (ABIN1684268 and ABIN3020597) at 1:10000 dilution. Lysates/proteins: 25 µg per lane. Blocking buffer: 3 % nonfat dry milk in TBST. Detection: ECL Basic Kit (RM00020). Exposure time: 30s.