



[Go to Product page](#)

Datasheet for ABIN6147744
anti-SHMT1 antibody (AA 285-444)

4 Images

Overview

Quantity:	100 µL
Target:	SHMT1
Binding Specificity:	AA 285-444
Reactivity:	Human
Host:	Rabbit
Clonality:	Polyclonal
Conjugate:	This SHMT1 antibody is un-conjugated
Application:	Western Blotting (WB), Immunohistochemistry (IHC), Immunofluorescence (IF)

Product Details

Immunogen:	Recombinant fusion protein containing a sequence corresponding to amino acids 285-444 of human SHMT1 (NP_683718.1).
Sequence:	FKVYQHQQVA NCRALSEALT ELGYKIVTGG SDNHLILVDL RSKGTDGGRA EKVLEACSLA CNKNTCPGDR SALRPSGLRL GTPALTSRGL LEKDFQKVAH FIHRGIELTL QIQSDTGVRA TLKEFKERLA GDKYQAAVQA LREEVESFAS LFPLPGLPDF
Isotype:	IgG
Cross-Reactivity:	Human, Mouse, Rat
Characteristics:	Polyclonal Antibodies

Target Details

Target:	SHMT1
---------	-------

Target Details

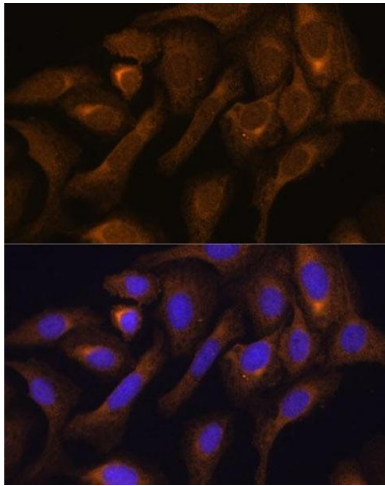
Alternative Name:	SHMT1 (SHMT1 Products)
Background:	This gene encodes the cytosolic form of serine hydroxymethyltransferase, a pyridoxal phosphate-containing enzyme that catalyzes the reversible conversion of serine and tetrahydrofolate to glycine and 5,10-methylene tetrahydrofolate. This reaction provides one-carbon units for synthesis of methionine, thymidylate, and purines in the cytoplasm. This gene is located within the Smith-Magenis syndrome region on chromosome 17. A pseudogene of this gene is located on the short arm of chromosome 1. Alternative splicing results in multiple transcript variants.,SHMT1,CSHMT,SHMT,Signal Transduction,Endocrine & Metabolism,Amino acid metabolism,SHMT1
Molecular Weight:	37 kDa/44 kDa/49 kDa/53 kDa
Gene ID:	6470
UniProt:	P34896

Application Details

Application Notes:	WB,1:500 - 1:2000,IHC,1:50 - 1:200,IF,1:50 - 1:200
Comment:	HIGH QUALITY
Restrictions:	For Research Use only

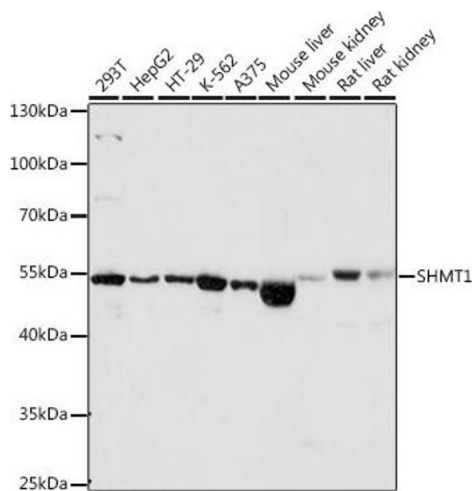
Handling

Format:	Liquid
Buffer:	PBS with 0.02 % sodium azide,50 % glycerol, pH 7.3.
Preservative:	Sodium azide
Precaution of Use:	This product contains Sodium azide: a POISONOUS AND HAZARDOUS SUBSTANCE which should be handled by trained staff only.
Storage:	-20 °C
Storage Comment:	Store at -20°C. Avoid freeze / thaw cycles.



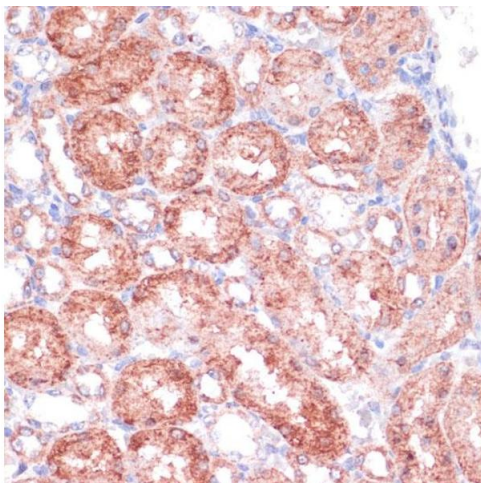
Immunohistochemistry

Image 1. Immunohistochemistry of paraffin-embedded mouse kidney using SHMT1 antibody (ABIN6132654, ABIN6147744, ABIN6147746 and ABIN6216135) at dilution of 1:100 (40x lens). Perform microwave antigen retrieval with 10 mM PBS buffer pH 7.2 before commencing with IHC staining protocol.



Western Blotting

Image 2. Western blot analysis of extracts of Mouse liver, using SHMT1 antibody (ABIN6132654, ABIN6147744, ABIN6147746 and ABIN6216135) at 1:1560 dilution. Secondary antibody: HRP Goat Anti-Rabbit IgG (H+L) (ABIN1684268 and ABIN3020597) at 1:10000 dilution. Lysates/proteins: 25 µg per lane. Blocking buffer: 3 % nonfat dry milk in TBST. Detection: ECL Basic Kit (RM00020). Exposure time: 1s.



Western Blotting

Image 3. Western blot analysis of extracts of various cell lines, using SHMT1 antibody (ABIN6132654, ABIN6147744, ABIN6147746 and ABIN6216135) at 1:1560 dilution. Secondary antibody: HRP Goat Anti-Rabbit IgG (H+L) (ABIN1684268 and ABIN3020597) at 1:10000 dilution. Lysates/proteins: 25 µg per lane. Blocking buffer: 3 % nonfat dry milk in TBST. Detection: ECL Basic Kit (RM00020). Exposure time: 10s.

Please check the [product details page](#) for more images. Overall 4 images are available for ABIN6147744.