

Datasheet for ABIN6147755  
**anti-SIAE antibody (AA 270-450)**



[Go to Product page](#)

1 Image

### Overview

Quantity:	100 µL
Target:	SIAE
Binding Specificity:	AA 270-450
Reactivity:	Human
Host:	Rabbit
Clonality:	Polyclonal
Conjugate:	This SIAE antibody is un-conjugated
Application:	Western Blotting (WB)

### Product Details

Immunogen:	Recombinant fusion protein containing a sequence corresponding to amino acids 270-450 of human SIAE (NP_733746.1).
Sequence:	LKGVVWYQGE SNINYNTDLY NCTFPALIED WRETFHRGSQ GQTERFFPFG LVQLSSDLSK KSSDDGFPQI RWHQTADFGY VPNPKMPNTF MAVAMDLCDR DSPFGSIHPR DKQTVAYRLH LGARALAYGE KNLTFEGPLP EKIELLAHKG LLNLTYQQI QVQKKDNKIF EISCCSDHRC K
Isotype:	IgG
Cross-Reactivity:	Human
Characteristics:	Polyclonal Antibodies

### Target Details

Target:	SIAE
---------	------

## Target Details

---

Alternative Name:	SIAE ( <a href="#">SIAE Products</a> )
Background:	This gene encodes an enzyme which removes 9-O-acetylation modifications from sialic acids. Mutations in this gene are associated with susceptibility to autoimmune disease 6. Multiple transcript variants encoding different isoforms, found either in the cytosol or in the lysosome, have been found for this gene.,SIAE,AIS6,CSE-C,CSEC,LSE,YSG2,SIAE
Molecular Weight:	54 kDa/58 kDa
Gene ID:	54414
UniProt:	<a href="#">Q9HAT2</a>

## Application Details

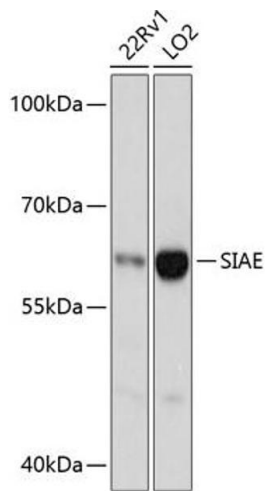
---

Application Notes:	WB,1:500 - 1:2000
Restrictions:	For Research Use only

## Handling

---

Format:	Liquid
Buffer:	PBS with 0.02 % sodium azide,50 % glycerol, pH 7.3.
Preservative:	Sodium azide
Precaution of Use:	This product contains Sodium azide: a POISONOUS AND HAZARDOUS SUBSTANCE which should be handled by trained staff only.
Storage:	-20 °C
Storage Comment:	Store at -20°C. Avoid freeze / thaw cycles.



### Western Blotting

**Image 1.** Western blot analysis of extracts of various cell lines, using SIAE antibody (ABIN6132918, ABIN6147755, ABIN6147756 and ABIN6217135) at 1:3000 dilution. Secondary antibody: HRP Goat Anti-Rabbit IgG (H+L) (ABIN1684268 and ABIN3020597) at 1:10000 dilution. Lysates/proteins: 25 µg per lane. Blocking buffer: 3 % nonfat dry milk in TBST. Detection: ECL Basic Kit (RM00020). Exposure time: 1s.