

Datasheet for ABIN6147759  
**anti-SIGLEC12 antibody (AA 20-210)**



[Go to Product page](#)

1 Image

Overview

Quantity:	100 µL
Target:	SIGLEC12
Binding Specificity:	AA 20-210
Reactivity:	Human
Host:	Rabbit
Clonality:	Polyclonal
Conjugate:	This SIGLEC12 antibody is un-conjugated
Application:	Western Blotting (WB)

Product Details

Immunogen:	Recombinant fusion protein containing a sequence corresponding to amino acids 20-210 of human SIGLEC12 (NP_443729.1).
Sequence:	EQKDYLTMQ KSVTVQEGLC VSVLCSFSYP QNGWTASDPV HGYWFRAGDH VSRNIPVATN NPARAVQEET RDRFHLLGDP QNKDCTLSIR DTRES DAGTY VFCVERGNMK WNYKYDQLSV NVTASQDLLS RYRLEVPEVS TVQEGLCVSV PCSVLYPHYN WTASSPVYGS WFKEGADIPW DIPVATNTPS G
Isotype:	IgG
Cross-Reactivity:	Mouse
Characteristics:	Polyclonal Antibodies

## Target Details

---

Target:	SIGLEC12
Alternative Name:	SIGLEC12 ( <a href="#">SIGLEC12 Products</a> )
Background:	<p>Sialic acid-binding immunoglobulin-like lectins (SIGLECs) are a family of cell surface proteins belonging to the immunoglobulin superfamily. They mediate protein-carbohydrate interactions by selectively binding to different sialic acid moieties present on glycolipids and glycoproteins. This gene encodes a member of the SIGLEC3-like subfamily of SIGLECs. Members of this subfamily are characterized by an extracellular V-set immunoglobulin-like domain followed by two C2-set immunoglobulin-like domains, and the cytoplasmic tyrosine-based motifs ITIM and SLAM-like. The encoded protein, upon tyrosine phosphorylation, has been shown to recruit the Src homology 2 domain-containing protein-tyrosine phosphatases SHP1 and SHP2. It has been suggested that the protein is involved in the negative regulation of macrophage signaling by functioning as an inhibitory receptor. This gene is located in a cluster with other SIGLEC3-like genes on 19q13.4. Alternative splicing results in multiple transcript variants.,SIGLEC12,S2V,SIGLECL1,SLG,Siglec-XII,Immunology &amp; Inflammation,Cell Intrinsic Innate Immunity Signaling Pathway,SIGLEC12</p>
Molecular Weight:	51 kDa/64 kDa
Gene ID:	89858
UniProt:	<a href="#">Q96PQ1</a>

## Application Details

---

Application Notes:	WB,1:500 - 1:2000
Comment:	HIGH QUALITY
Restrictions:	For Research Use only

## Handling

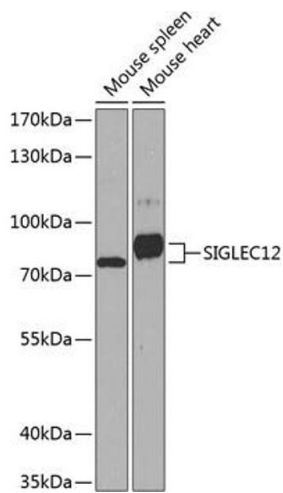
---

Format:	Liquid
Buffer:	PBS with 0.02 % sodium azide,50 % glycerol, pH 7.3.
Preservative:	Sodium azide
Precaution of Use:	This product contains Sodium azide: a POISONOUS AND HAZARDOUS SUBSTANCE which should be handled by trained staff only.
Storage:	-20 °C

## Handling

Storage Comment: Store at -20°C. Avoid freeze / thaw cycles.

## Images



### Western Blotting

**Image 1.** Western blot analysis of extracts of various cell lines, using SIGLEC12 antibody (ABIN6132656, ABIN6147759, ABIN6147760 and ABIN6224611) at 1:1000 dilution. Secondary antibody: HRP Goat Anti-Rabbit IgG (H+L) (ABIN1684268 and ABIN3020597) at 1:10000 dilution. Lysates/proteins: 25 µg per lane. Blocking buffer: 3 % nonfat dry milk in TBST. Detection: ECL Basic Kit (RM00020). Exposure time: 90s.