

Datasheet for ABIN6147761  
**anti-SIGLEC5 antibody (AA 452-551)**



[Go to Product page](#)

1 Image

## Overview

Quantity:	100 µL
Target:	SIGLEC5
Binding Specificity:	AA 452-551
Reactivity:	Human
Host:	Rabbit
Clonality:	Polyclonal
Conjugate:	This SIGLEC5 antibody is un-conjugated
Application:	Western Blotting (WB)

## Product Details

Immunogen:	Recombinant fusion protein containing a sequence corresponding to amino acids 452-551 of human SIGLEC5 (NP_003821.1).
Sequence:	ICLCLIFFLI VKARRKQAAG RPEKMDDEDP IMGTITSGSR KKPWPDSPGD QASPPGDAPP LEEQKELHYA SLSFSEMKS R EPKDQEAPST TEYSEIKTSK
Isotype:	IgG
Cross-Reactivity:	Human
Characteristics:	Polyclonal Antibodies

## Target Details

Target:	SIGLEC5
---------	---------

## Target Details

---

Alternative Name:	SIGLEC5 ( <a href="#">SIGLEC5 Products</a> )
Background:	This gene encodes a member of the sialic acid-binding immunoglobulin-like lectin (Siglec) family. These cell surface lectins are characterized by structural motifs in the immunoglobulin (Ig)-like domains and sialic acid recognition sites in the first Ig V set domain. The encoded protein is a member of the CD33-related subset of Siglecs and inhibits the activation of several cell types including monocytes, macrophages and neutrophils. Binding of group B Streptococcus (GBS) to the encoded protein plays a role in GBS immune evasion.,SIGLEC5,CD170,CD33L2,OB-BP2,OBBP2,SIGLEC-5,Immunology & Inflammation,CD markers,SIGLEC5
Molecular Weight:	60 kDa
Gene ID:	8778
UniProt:	<a href="#">O15389</a>

## Application Details

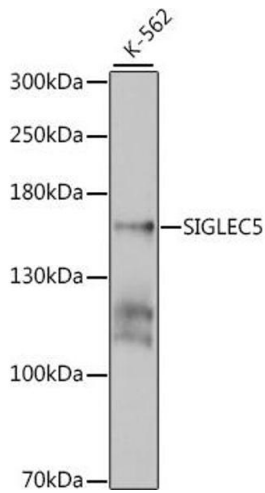
---

Application Notes:	WB,1:500 - 1:2000
Comment:	HIGH QUALITY
Restrictions:	For Research Use only

## Handling

---

Format:	Liquid
Buffer:	PBS with 0.02 % sodium azide,50 % glycerol, pH 7.3.
Preservative:	Sodium azide
Precaution of Use:	This product contains Sodium azide: a POISONOUS AND HAZARDOUS SUBSTANCE which should be handled by trained staff only.
Storage:	-20 °C
Storage Comment:	Store at -20°C. Avoid freeze / thaw cycles.



### Western Blotting

**Image 1.** Western blot analysis of extracts of K-562 cells, using SIGLEC5 antibody at 1:1000 dilution. Secondary antibody: HRP Goat Anti-Rabbit IgG (H+L) (ABIN1684268 and ABIN3020597) at 1:10000 dilution. Lysates/proteins: 25 µg per lane. Blocking buffer: 3% nonfat dry milk in TBST. Detection: ECL Basic Kit (RM00020). Exposure time: 1s.