

Datasheet for ABIN6147817
anti-SKP1 antibody (AA 1-163)[Go to Product page](#)

1 Image

Overview

Quantity:	100 µL
Target:	SKP1
Binding Specificity:	AA 1-163
Reactivity:	Human
Host:	Rabbit
Clonality:	Polyclonal
Conjugate:	This SKP1 antibody is un-conjugated
Application:	Western Blotting (WB)

Product Details

Immunogen:	Recombinant fusion protein containing a sequence corresponding to amino acids 1-163 of human SKP1 (NP_733779.1).
Sequence:	MPSIKLQSSD GEIFEVDVEI AKQSVTIKTM LEDLGMDDEG DDDPVPLPNV NAAILKKVIQ WCTHHKDDPP PPEDDENKEK RTDDIPVWDQ EFLKVDQGT L FELILAANYL DIKGLLDVTC KTVANMIK GK TPEEIRKTFN IKNDFTEEEE AQVRKENQWC EEK
Isotype:	IgG
Cross-Reactivity:	Human, Mouse, Rat
Characteristics:	Polyclonal Antibodies

Target Details

Target:	SKP1
---------	------

Target Details

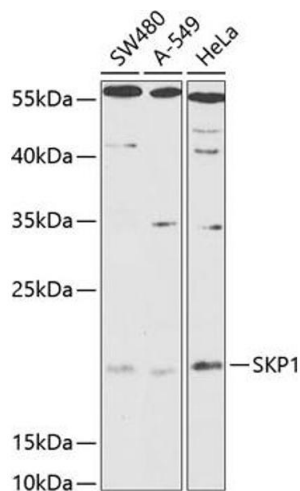
Alternative Name:	SKP1 (SKP1 Products)
Background:	<p>This gene encodes a component of SCF complexes, which are composed of this protein, cullin 1, a ring-box protein, and one member of the F-box family of proteins. This protein binds directly to the F-box motif found in F-box proteins. SCF complexes are involved in the regulated ubiquitination of specific protein substrates, which targets them for degradation by the proteasome. Specific F-box proteins recognize different target protein(s), and many specific SCF substrates have been identified including regulators of cell cycle progression and development. Studies have also characterized the protein as an RNA polymerase II elongation factor. Alternative splicing of this gene results in two transcript variants. A related pseudogene has been identified on chromosome 7.,SKP1,EMC19,OCP-II,OCP2,SKP1A,TCEB1L,p19A,Signal Transduction,Kinase,Cell Biology & Developmental Biology,Cell Cycle,Centrosome,Centromere,Ubiquitin,Ubiquitin-Proteasome Signaling Pathway,SKP1</p>
Molecular Weight:	18 kDa
Gene ID:	6500
UniProt:	P63208
Pathways:	Cell Division Cycle , Hedgehog Signaling , Mitotic G1-G1/S Phases

Application Details

Application Notes:	WB,1:500 - 1:2000
Comment:	HIGH QUALITY
Restrictions:	For Research Use only

Handling

Format:	Liquid
Buffer:	PBS with 0.02 % sodium azide,50 % glycerol, pH 7.3.
Preservative:	Sodium azide
Precaution of Use:	This product contains Sodium azide: a POISONOUS AND HAZARDOUS SUBSTANCE which should be handled by trained staff only.
Storage:	-20 °C
Storage Comment:	Store at -20°C. Avoid freeze / thaw cycles.



Western Blotting

Image 1. Western blot analysis of extracts of various cell lines, using SKP1 antibody (ABIN6130683, ABIN6147817, ABIN6147819 and ABIN6216158) at 1:1000 dilution. Secondary antibody: HRP Goat Anti-Rabbit IgG (H+L) (ABIN1684268 and ABIN3020597) at 1:10000 dilution. Lysates/proteins: 25 µg per lane. Blocking buffer: 3 % nonfat dry milk in TBST.