



[Go to Product page](#)

Datasheet for ABIN6147845
anti-SLC12A7 antibody (AA 1-70)

1 Image

Overview

Quantity:	100 µL
Target:	SLC12A7
Binding Specificity:	AA 1-70
Reactivity:	Human
Host:	Rabbit
Clonality:	Polyclonal
Conjugate:	This SLC12A7 antibody is un-conjugated
Application:	Western Blotting (WB)

Product Details

Immunogen:	Recombinant fusion protein containing a sequence corresponding to amino acids 1-70 of human SLC12A7 (NP_006589.2).
Sequence:	MPTNFTVVPV EAHADGGGDE TAERTEAPGT PEGPEPERPS PGDGNPRENS PFLNNVEVEQ ESFFEGKNMA
Isotype:	IgG
Cross-Reactivity:	Human, Mouse, Rat
Characteristics:	Polyclonal Antibodies

Target Details

Target:	SLC12A7
---------	---------

Target Details

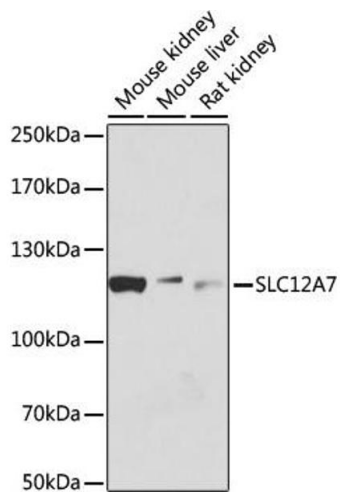
Alternative Name:	SLC12A7 (SLC12A7 Products)
Background:	Mediates electroneutral potassium-chloride cotransport when activated by cell swelling. May mediate K(+) uptake into Deiters' cells in the cochlea and contribute to K(+) recycling in the inner ear. Important for the survival of cochlear outer and inner hair cells and the maintenance of the organ of Corti. May be required for basolateral Cl(-) extrusion in the kidney and contribute to renal acidification (By similarity.,SLC12A7,KCC4,Neuroscience,SLC12A7)
Molecular Weight:	28 kDa/119 kDa
Gene ID:	10723
UniProt:	Q9Y666

Application Details

Application Notes:	WB,1:500 - 1:2000
Comment:	HIGH QUALITY
Restrictions:	For Research Use only

Handling

Format:	Liquid
Buffer:	PBS with 0.02 % sodium azide,50 % glycerol, pH 7.3.
Preservative:	Sodium azide
Precaution of Use:	This product contains Sodium azide: a POISONOUS AND HAZARDOUS SUBSTANCE which should be handled by trained staff only.
Storage:	-20 °C
Storage Comment:	Store at -20°C. Avoid freeze / thaw cycles.



Western Blotting

Image 1. Western blot analysis of extracts of various cell lines, using SLC12 antibody (ABIN6131138, ABIN6147845, ABIN6147846 and ABIN6215907) at 1:1000 dilution. Secondary antibody: HRP Goat Anti-Rabbit IgG (H+L) (ABIN1684268 and ABIN3020597) at 1:10000 dilution. Lysates/proteins: 25 µg per lane. Blocking buffer: 3 % nonfat dry milk in TBST. Detection: ECL Basic Kit (RM00020). Exposure time: 30s.