



[Go to Product page](#)

Datasheet for ABIN6147859

## anti-SLC16A3 antibody (AA 371-465)

### 3 Images

#### Overview

Quantity:	100 µL
Target:	SLC16A3
Binding Specificity:	AA 371-465
Reactivity:	Human
Host:	Rabbit
Clonality:	Polyclonal
Conjugate:	This SLC16A3 antibody is un-conjugated
Application:	Western Blotting (WB), Immunohistochemistry (IHC)

#### Product Details

Immunogen:	Recombinant fusion protein containing a sequence corresponding to amino acids 371-465 of human MCT4/SLC16A3 (NP_004198.1).
Sequence:	PPSGGKLLDA THVYMYVFIL AGAEVLTSSL ILLLGNFFCI RKKPKPEQPE VAAAEKKLH KPPADSGVDL REVEHFLKAE PEKNGEVVHT PETS
Isotype:	IgG
Cross-Reactivity:	Human, Rat
Characteristics:	Polyclonal Antibodies

#### Target Details

Target:	SLC16A3
---------	---------

## Target Details

---

Alternative Name:	SLC16A3 ( <a href="#">SLC16A3 Products</a> )
Background:	Lactic acid and pyruvate transport across plasma membranes is catalyzed by members of the proton-linked monocarboxylate transporter (MCT) family, which has been designated solute carrier family-16. Each MCT appears to have slightly different substrate and inhibitor specificities and transport kinetics, which are related to the metabolic requirements of the tissues in which it is found. The MCTs, which include MCT1 (SLC16A1, MIM 600682) and MCT2 (SLC16A7, MIM 603654), are characterized by 12 predicted transmembrane domains (Price et al., 1998 [PubMed 9425115]).[supplied by OMIM, Mar 2008],SLC16A3,MCT 3,MCT 4,MCT-3,MCT-4,MCT3,MCT4,Epigenetics & Nuclear Signaling,RNA Binding,SLC16A3
Molecular Weight:	49 kDa
Gene ID:	9123
UniProt:	<a href="#">O15427</a>
Pathways:	<a href="#">Warburg Effect</a>

## Application Details

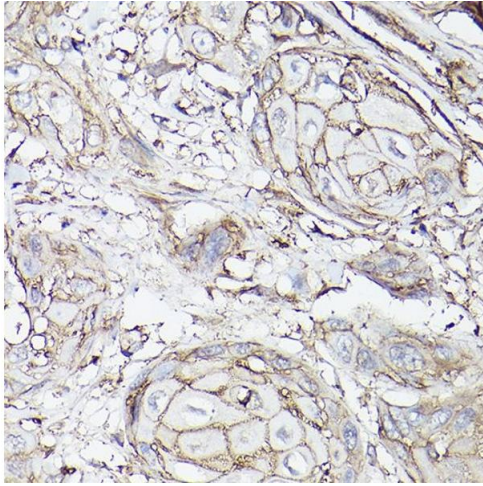
---

Application Notes:	WB,1:500 - 1:2000,IHC,1:50 - 1:200
Restrictions:	For Research Use only

## Handling

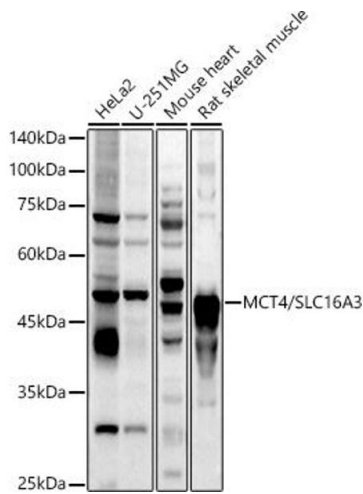
---

Format:	Liquid
Buffer:	PBS with 0.02 % sodium azide,50 % glycerol, pH 7.3.
Preservative:	Sodium azide
Precaution of Use:	This product contains Sodium azide: a POISONOUS AND HAZARDOUS SUBSTANCE which should be handled by trained staff only.
Storage:	-20 °C
Storage Comment:	Store at -20°C. Avoid freeze / thaw cycles.



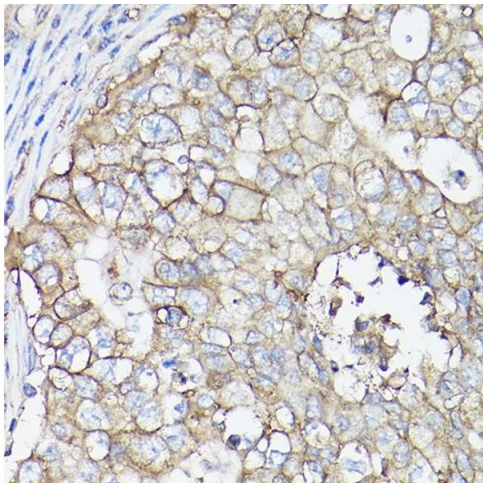
### Immunohistochemistry

**Image 1.** Immunohistochemistry of paraffin-embedded human esophageal cancer using MCT4/SLC16 Rabbit pAb (ABIN6129472, ABIN6147859, ABIN6147860 and ABIN6214836) at dilution of 1:100 (40x lens). Perform high pressure antigen retrieval with 10 mM citrate buffer pH 6.0 before commencing with IHC staining protocol.



### Western Blotting

**Image 2.** Western blot analysis of extracts of various cell lines, using MCT4/SLC16 antibody (ABIN6129472, ABIN6147859, ABIN6147860 and ABIN6214836) at 1:1000 dilution. Secondary antibody: HRP Goat Anti-Rabbit IgG (H+L) (ABIN1684268 and ABIN3020597) at 1:10000 dilution. Lysates/proteins: 25 µg per lane. Blocking buffer: 3 % nonfat dry milk in TBST. Detection: ECL Basic Kit (RM00020). Exposure time: 30s.



### Immunohistochemistry

**Image 3.** Immunohistochemistry of paraffin-embedded human breast cancer using MCT4/SLC16 Rabbit pAb (ABIN6129472, ABIN6147859, ABIN6147860 and ABIN6214836) at dilution of 1:100 (40x lens). Perform high pressure antigen retrieval with 10 mM citrate buffer pH 6.0 before commencing with IHC staining protocol.