



[Go to Product page](#)

Datasheet for ABIN6147868  
**anti-SLC1A1 antibody (AA 430-524)**

3 Images

### Overview

Quantity:	100 µL
Target:	SLC1A1
Binding Specificity:	AA 430-524
Reactivity:	Human
Host:	Rabbit
Clonality:	Polyclonal
Conjugate:	This SLC1A1 antibody is un-conjugated
Application:	Western Blotting (WB), Immunofluorescence (IF)

### Product Details

Immunogen:	Recombinant fusion protein containing a sequence corresponding to amino acids 430-524 of human SLC1A1 (NP_004161.4).
Sequence:	AEDVTLLIAV DWLLDRFRTM VNVLGDAFGT GIVEKLSKKE LEQMDVSSEV NIVNPFALLES TILDNEDSDT KKSYYVNGGFA VDKSDTISFT QTSQF
Isotype:	IgG
Cross-Reactivity:	Human, Mouse, Rat
Characteristics:	Polyclonal Antibodies

### Target Details

Target:	SLC1A1
---------	--------

## Target Details

---

Alternative Name:	SLC1A1 ( <a href="#">SLC1A1 Products</a> )
Background:	This gene encodes a member of the high-affinity glutamate transporters that play an essential role in transporting glutamate across plasma membranes. In brain, these transporters are crucial in terminating the postsynaptic action of the neurotransmitter glutamate, and in maintaining extracellular glutamate concentrations below neurotoxic levels. This transporter also transports aspartate, and mutations in this gene are thought to cause dicarboxylicamino aciduria, also known as glutamate-aspartate transport defect.,SLC1A1,DCBXA,EAAC1,EAAT3,SCZD18,Neuroscience,SLC1A1
Molecular Weight:	57 kDa
Gene ID:	6505
UniProt:	<a href="#">P43005</a>
Pathways:	<a href="#">Dicarboxylic Acid Transport</a>

## Application Details

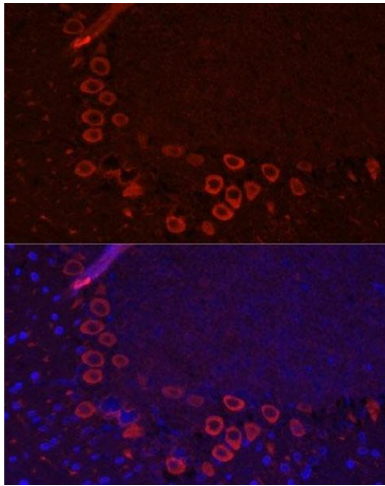
---

Application Notes:	WB,1:500 - 1:2000,IF,1:50 - 1:200
Restrictions:	For Research Use only

## Handling

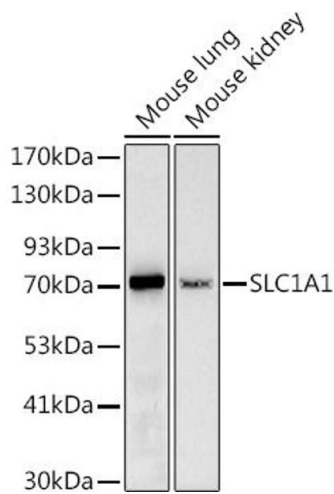
---

Format:	Liquid
Buffer:	PBS with 0.02 % sodium azide,50 % glycerol, pH 7.3.
Preservative:	Sodium azide
Precaution of Use:	This product contains Sodium azide: a POISONOUS AND HAZARDOUS SUBSTANCE which should be handled by trained staff only.
Storage:	-20 °C
Storage Comment:	Store at -20°C. Avoid freeze / thaw cycles.



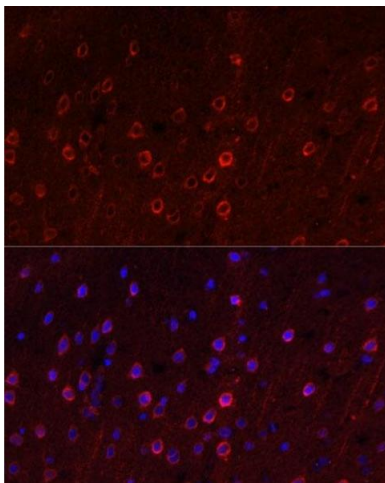
### Immunofluorescence

**Image 1.** Immunofluorescence analysis of mouse brain using SLC1 antibody (ABIN6131630, ABIN6147868, ABIN6147869 and ABIN6219899) at dilution of 1:100. Blue: DAPI for nuclear staining.



### Western Blotting

**Image 2.** Western blot analysis of extracts of various cell lines, using (ABIN6131630, ABIN6147868, ABIN6147869 and ABIN6219899) at 1:1000 dilution. Secondary antibody: HRP Goat Anti-Rabbit IgG (H+L) (ABIN1684268 and ABIN3020597) at 1:10000 dilution. Lysates/proteins: 25 µg per lane. Blocking buffer: 3% nonfat dry milk in TBST. Detection: ECL Basic Kit (RM00020). Exposure time: 180s.



### Immunofluorescence

**Image 3.** Immunofluorescence analysis of rat brain using SLC1 antibody (ABIN6131630, ABIN6147868, ABIN6147869 and ABIN6219899) at dilution of 1:100. Blue: DAPI for nuclear staining.