



[Go to Product page](#)

Datasheet for ABIN6147872  
**anti-SLC1A4 antibody (AA 140-220)**

4 Images

Overview

Quantity:	100 µL
Target:	SLC1A4
Binding Specificity:	AA 140-220
Reactivity:	Human
Host:	Rabbit
Clonality:	Polyclonal
Conjugate:	This SLC1A4 antibody is un-conjugated
Application:	Western Blotting (WB)

Product Details

Immunogen:	Recombinant fusion protein containing a sequence corresponding to amino acids 140-220 of human SLC1A4 (NP_003029.2).
Sequence:	KPGSGAQLTQ SSDLGLED SG PPPVPKETVD SFLDLARNLF PSNLVVAEFR TYATDYKVVV QNSSSGNVTH EKIPIGTEIE G
Isotype:	IgG
Cross-Reactivity:	Human, Mouse, Rat
Characteristics:	Polyclonal Antibodies

Target Details

Target:	SLC1A4
---------	--------

## Target Details

---

Alternative Name:	SLC1A4 ( <a href="#">SLC1A4 Products</a> )
Background:	The protein encoded by this gene is a sodium-dependent neutral amino acid transporter for alanine, serine, cysteine, and threonine. Defects in this gene have been associated with developmental delay, microcephaly, and intellectual disability.,SLC1A4,ASCT1,SATT,SPATCCM,SLC1A4
Molecular Weight:	24 kDa/55 kDa
Gene ID:	6509
UniProt:	<a href="#">P43007</a>
Pathways:	<a href="#">Dicarboxylic Acid Transport</a>

## Application Details

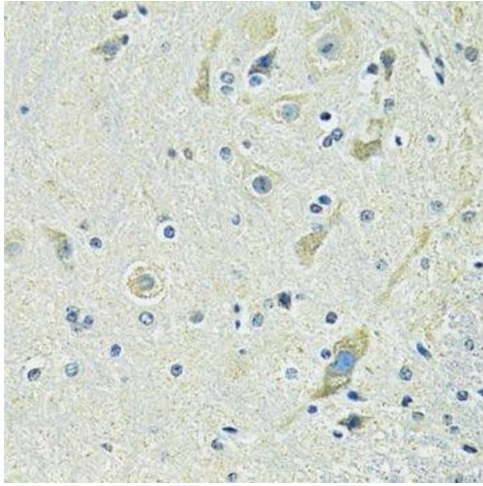
---

Application Notes:	WB,1:500 - 1:2000
Comment:	HIGH QUALITY
Restrictions:	For Research Use only

## Handling

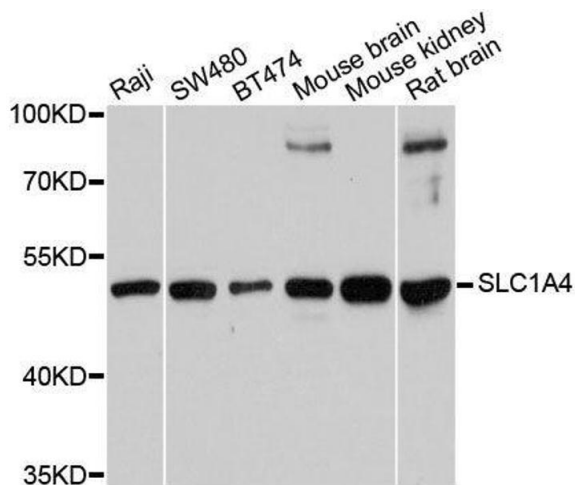
---

Format:	Liquid
Buffer:	PBS with 0.02 % sodium azide,50 % glycerol, pH 7.3.
Preservative:	Sodium azide
Precaution of Use:	This product contains Sodium azide: a POISONOUS AND HAZARDOUS SUBSTANCE which should be handled by trained staff only.
Storage:	-20 °C
Storage Comment:	Store at -20°C. Avoid freeze / thaw cycles.



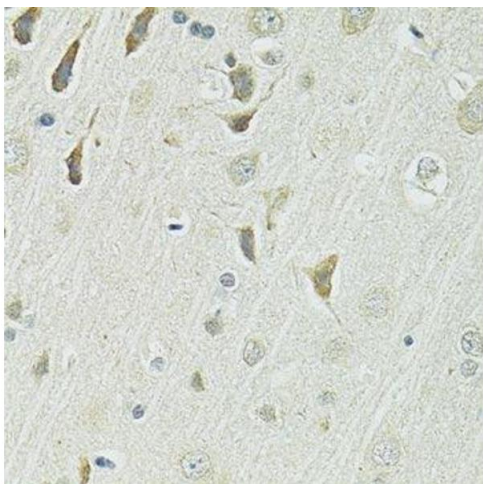
#### Immunohistochemistry (Paraffin-embedded Sections)

**Image 1.** Immunohistochemistry of paraffin-embedded mouse spinal cord using SLC1A4 antibody.



#### Western Blotting

**Image 2.** Western blot analysis of extracts of various cell lines, using SLC1A4 antibody.



#### Immunohistochemistry (Paraffin-embedded Sections)

**Image 3.** Immunohistochemistry of paraffin-embedded rat brain using SLC1A4 antibody.

Please check the [product details page](#) for more images. Overall 4 images are available for ABIN6147872.