

Datasheet for ABIN6147887  
**anti-SLC22A2 antibody (AA 44-140)**[Go to Product page](#)

## 1 Image

## Overview

Quantity:	100 µL
Target:	SLC22A2
Binding Specificity:	AA 44-140
Reactivity:	Human
Host:	Rabbit
Clonality:	Polyclonal
Conjugate:	This SLC22A2 antibody is un-conjugated
Application:	Western Blotting (WB)

## Product Details

Immunogen:	Recombinant fusion protein containing a sequence corresponding to amino acids 44-140 of human SLC22A2 (NP_003049.2).
Sequence:	GFTPDHRCRS PGVAELSLRC GWSPAEELNY TVPGPGPAGE ASPRQCRRYE VDWNQSTFDC VDPLASLDTN RSRLPLGPCR DGWVYETPGS SIVTEFN
Isotype:	IgG
Cross-Reactivity:	Human, Rat
Characteristics:	Polyclonal Antibodies

## Target Details

Target:	SLC22A2
---------	---------

## Target Details

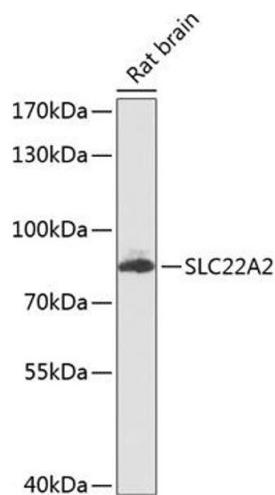
Alternative Name:	SLC22A2 ( <a href="#">SLC22A2 Products</a> )
Background:	Polyspecific organic cation transporters in the liver, kidney, intestine, and other organs are critical for elimination of many endogenous small organic cations as well as a wide array of drugs and environmental toxins. This gene is one of three similar cation transporter genes located in a cluster on chromosome 6. The encoded protein contains twelve putative transmembrane domains and is a plasma integral membrane protein. It is found primarily in the kidney, where it may mediate the first step in cation reabsorption.,SLC22A2,43010,OCT2,SLC22A2
Molecular Weight:	26 kDa/54 kDa/62 kDa
Gene ID:	6582
UniProt:	<a href="#">O15244</a>

## Application Details

Application Notes:	WB,1:500 - 1:2000
Comment:	HIGH QUALITY
Restrictions:	For Research Use only

## Handling

Format:	Liquid
Buffer:	PBS with 0.02 % sodium azide,50 % glycerol, pH 7.3.
Preservative:	Sodium azide
Precaution of Use:	This product contains Sodium azide: a POISONOUS AND HAZARDOUS SUBSTANCE which should be handled by trained staff only.
Storage:	-20 °C
Storage Comment:	Store at -20°C. Avoid freeze / thaw cycles.



#### Western Blotting

**Image 1.** Western blot analysis of extracts of rat brain, using SLC22 antibody (ABIN6129480, ABIN6147887, ABIN6147889 and ABIN6224517) at 1:1000 dilution. Secondary antibody: HRP Goat Anti-Rabbit IgG (H+L) (ABIN1684268 and ABIN3020597) at 1:10000 dilution. Lysates/proteins: 25 µg per lane. Blocking buffer: 3 % nonfat dry milk in TBST. Detection: ECL Basic Kit (RM00020). Exposure time: 90s.