



[Go to Product page](#)

Datasheet for ABIN6147911  
**anti-SLC25A14 antibody (AA 25-200)**

1 Image

Overview

Quantity:	100 µL
Target:	SLC25A14
Binding Specificity:	AA 25-200
Reactivity:	Human
Host:	Rabbit
Clonality:	Polyclonal
Conjugate:	This SLC25A14 antibody is un-conjugated
Application:	Western Blotting (WB), Immunofluorescence (IF)

Product Details

Immunogen:	Recombinant fusion protein containing a sequence corresponding to amino acids 25-200 of human SLC25A14 (NP_001269124.1).
Sequence:	GHQKSTTVSH EMSGLNWKPF VYGLASIVA EFGTFPVDLT KTRLQVQGQS IDARFKEIKY RGMFHALFRI CKEEGVLALY SGIAPALLRQ ASYGTIKIGI YQSLKRLFVE RLEDETLIN MIGVVSGVI SSTIANPTDV LKIRMQAQGS LFQGS MIGSF IDIYQQEGTR GLWRGV
Isotype:	IgG
Cross-Reactivity:	Human, Mouse, Rat
Characteristics:	Polyclonal Antibodies

Target Details

Target:	SLC25A14
---------	----------

## Target Details

---

Alternative Name:	SLC25A14 ( <a href="#">SLC25A14 Products</a> )
Background:	Mitochondrial uncoupling proteins (UCP) are members of the larger family of mitochondrial anion carrier proteins (MACP). Uncoupling proteins separate oxidative phosphorylation from ATP synthesis with energy dissipated as heat, also referred to as the mitochondrial proton leak. Uncoupling proteins facilitate the transfer of anions from the inner to the outer mitochondrial membrane and the return transfer of protons from the outer to the inner mitochondrial membrane. They also reduce the mitochondrial membrane potential in mammalian cells. This gene is widely expressed in many tissues with the greatest abundance in brain and testis. Alternative splicing results in multiple transcript variants. A pseudogene of this gene has been defined on chromosome 4.,SLC25A14,BMCP1,UCP5,SLC25A14
Molecular Weight:	35 kDa/36 kDa/39 kDa
Gene ID:	9016
UniProt:	<a href="#">O95258</a>
Pathways:	<a href="#">Proton Transport</a>

## Application Details

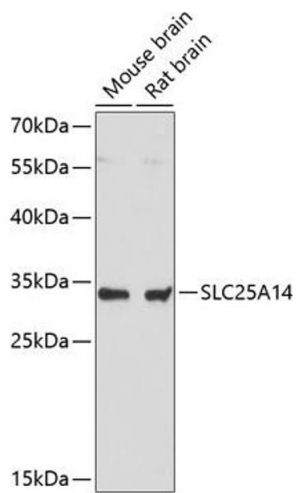
---

Application Notes:	WB,1:500 - 1:2000,IF,1:50 - 1:200
Restrictions:	For Research Use only

## Handling

---

Format:	Liquid
Buffer:	PBS with 0.02 % sodium azide,50 % glycerol, pH 7.3.
Preservative:	Sodium azide
Precaution of Use:	This product contains Sodium azide: a POISONOUS AND HAZARDOUS SUBSTANCE which should be handled by trained staff only.
Storage:	-20 °C
Storage Comment:	Store at -20°C. Avoid freeze / thaw cycles.



### Western Blotting

**Image 1.** Western blot analysis of extracts of various cell lines, using SLC25 antibody (ABIN6129481, ABIN6147911, ABIN6147912 and ABIN6217834) at 1:3000 dilution. Secondary antibody: HRP Goat Anti-Rabbit IgG (H+L) (ABIN1684268 and ABIN3020597) at 1:10000 dilution. Lysates/proteins: 25 µg per lane. Blocking buffer: 3 % nonfat dry milk in TBST. Detection: ECL Basic Kit (RM00020). Exposure time: 90s.