



Datasheet for ABIN6147913
anti-SLC25A19 antibody (AA 1-80)



[Go to Product page](#)

2 Images

Overview

Quantity:	100 µL
Target:	SLC25A19
Binding Specificity:	AA 1-80
Reactivity:	Human
Host:	Rabbit
Clonality:	Polyclonal
Conjugate:	This SLC25A19 antibody is un-conjugated
Application:	Western Blotting (WB), Immunofluorescence (IF)

Product Details

Immunogen:	Recombinant fusion protein containing a sequence corresponding to amino acids 1-80 of human SLC25A19 (NP_068380.3).
Sequence:	MVGYDPKPDG RNNTKFQVAV AGSVSGLVTR ALISPFVVIK IRFQLQHERL SRSDPSAKYH GILQASRQIL QEEGPTAFWK
Isotype:	IgG
Cross-Reactivity:	Human, Mouse, Rat
Characteristics:	Polyclonal Antibodies

Target Details

Target:	SLC25A19
---------	----------

Target Details

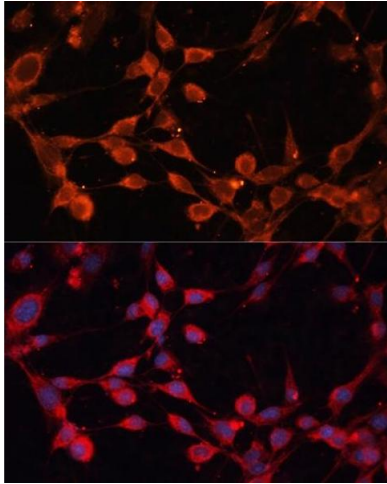
Alternative Name:	SLC25A19 (SLC25A19 Products)
Background:	<p>This gene encodes a mitochondrial protein that is a member of the solute carrier family. Although this protein was initially thought to be the mitochondrial deoxynucleotide carrier involved in the uptake of deoxynucleotides into the matrix of the mitochondria, further studies have demonstrated that this protein instead functions as the mitochondrial thiamine pyrophosphate carrier, which transports thiamine pyrophosphates into mitochondria. Mutations in this gene cause microcephaly, Amish type, a metabolic disease that results in severe congenital microcephaly, severe 2-ketoglutaric aciduria, and death within the first year. Multiple alternatively spliced variants, encoding the same protein, have been identified for this gene.,SLC25A19,DNC,MCPHA,MUP1,THMD3,THMD4,TPC,SLC25A19</p>
Molecular Weight:	29 kDa/35 kDa
Gene ID:	60386
UniProt:	Q9HC21

Application Details

Application Notes:	WB,1:500 - 1:2000,IF,1:50 - 1:200
Restrictions:	For Research Use only

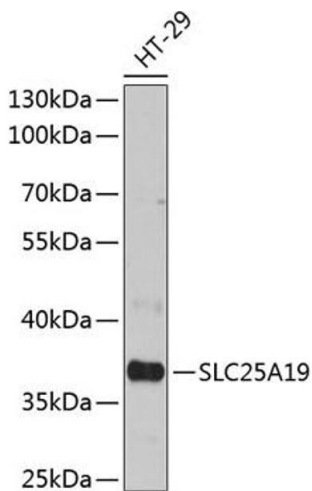
Handling

Format:	Liquid
Buffer:	PBS with 0.02 % sodium azide,50 % glycerol, pH 7.3.
Preservative:	Sodium azide
Precaution of Use:	This product contains Sodium azide: a POISONOUS AND HAZARDOUS SUBSTANCE which should be handled by trained staff only.
Storage:	-20 °C
Storage Comment:	Store at -20°C. Avoid freeze / thaw cycles.



Immunofluorescence

Image 1. Immunofluorescence analysis of NIH/3T3 cells using SLC25 antibody (ABIN6132701, ABIN6147913, ABIN6147915 and ABIN6215984) at dilution of 1:100. Blue: DAPI for nuclear staining.



Western Blotting

Image 2. Western blot analysis of extracts of HT-29 cells, using SLC25 antibody (ABIN6132701, ABIN6147913, ABIN6147915 and ABIN6215984) at 1:3000 dilution. Secondary antibody: HRP Goat Anti-Rabbit IgG (H+L) (ABIN1684268 and ABIN3020597) at 1:10000 dilution. Lysates/proteins: 25 µg per lane. Blocking buffer: 3 % nonfat dry milk in TBST. Detection: ECL Basic Kit (RM00020). Exposure time: 30s.